

PLATE STACKERS

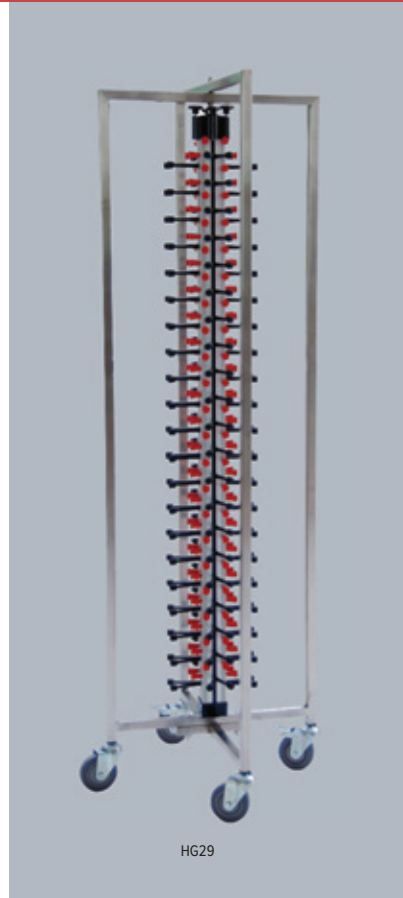
Code	Description
------	-------------

- Designed to save space in your kitchen
- Can stack all bowls up to 5cm high—round, square, rectangular and oval
- Settings can be easily adjusted manually to suit your plate types
- Stores a large number of plates in a small area
- Easily cleaned by either a high-pressure cleaner or a brush and warm soapy water
- When not in use, can be easily stored away using minimal space

Collapsible Floor Model

HG29

- Holds 84 plates
- Dimensions: 730W x 730D x 1910mmH
- Collapsible for compact storage
- Ideal for catering and mobile work
- A great way for providing improved service while lowering the risk of breaking plates



HG29



MOBILE CONTAINING



EL1, EL8–10



EL2, EL6, EL7, EL15



EL3–EL4



EL11, EL17

LOWERATORS AND PLATE STACKING UNITS

Code	Description
------	-------------

A great way for providing improved service while lowering the risk of breaking plates.

Incounter, Unheated Plate Lowerators

For round plates with 4 fixed guides.

- EL8 for plates 160–210mm round
- EL9 for plates 190–240mm round
- EL1 for plates 230–280mm round
- EL10 for plates 260–310mm round

Incounter, Heated 230V/400W Plate Lowerators

For round plates with separate operating panel with adjustable thermostat 30–120°C with 4 fixed guides.

- Can be incorporated into serving benches and trolleys
- Suits plates of 230–280mm diameter (other sizes available on special order)
- Plates are kept warm and elevated to the correct dispensing height
- Springs to adjust tension

- EL7 for plates 190–240mm round
- EL2 for plates 230–280mm round
- EL6 for plates 260–310mm round
- EL15 for plates 290–338mm round

Mobile, Heated 230V/1600W, 2 Stacking Units for Plates

- Completely made of stainless steel 18/10
- Double skinned and insulated
- 4 swivel castors, 2 with brake and corner bumpers
- Stacking units with 4 fixed guides to ensure a good operation
- Cross-flow static heating
- Spiral cable and plug, switch/neon and moisture protection cap
- Adjustable thermostat 30–120°C
- Approx capacity 120 plates (2 x 60)

- EL3 for plates 230–280mm round
- EL4 for plates 260–310mm round

Lowerator Plate Covers:

- EL11 Lowerator Plate Cover for T(H)N / DFR 280 366mm
- EL17 Lowerator Plate Cover for T(H)N / DFR 310 310mm

For detailed specifications and drawings please contact online@southernhospitality.co.nz

TONON SHELIVING DESIGNED AND MANUFACTURED IN ITALY.

Made in ITALY

**Code** **Description**

The TONON EKO FIT shelving range has been designed for damp and corrosive environments, combining anodised aluminium frames and traverses with polyethylene slats. It is recommended for all areas of food service including walk in chillers, walk in freezers and dry goods areas.

Key features

- Shelves are easy to adjust and have easy to clean removable slats that actually fit in your dishwasher or sink. Slats are manufactured from polyethylene.
- Posts/traverses are manufactured from high strength anodised aluminium. Very strong and resistant to corrosion.
- Certified load capacities: 110–250kg per shelf.
- Meets NSF & NF international hygiene standards.
- Quick & easy assembly, installation can be completed by one person.
- Other size options available.

SHT10 4 Tier 920W x 450D x 1700mmH
SHT11 4 Tier 920W x 600D x 1700mmH

SHT1 4 Tier 1070W x 450D x 1700mmH
SHT2 4 Tier 1070W x 600D x 1700mmH

SHT3 4 Tier 1220W x 300D x 1700mmH
SHT4 4 Tier 1220W x 450D x 1700mmH
SHT5 4 Tier 1220W x 600D x 1700mmH

SHT6 4 Tier 1520W x 450D x 1700mmH
SHT7 4 Tier 1520W x 600D x 1700mmH

SHT8 4 Tier 1820W x 450D x 1700mmH
SHT9 4 Tier 1820W x 600D x 1700mmH



To see the Tonon load test, scan this code.

SHT40 Tonon Wall Bracket for Shelving Frame KFSFP2

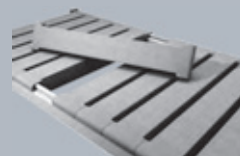
Dunnage Racks

SHT24 1525 x 450 x 310mmH
SHT41 1525 x 600 x 310mmH

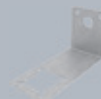
TONON
Eko Fit



SHT1–SHT11



Vented aluminium shelf with polyethylene slats.



SHT40



SHT24, SHT41

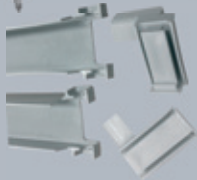




SHT12-SHT20



SHT21-SHT23



TONON SHELVING DESIGNED AND MANUFACTURED IN ITALY.



Code	Description
------	-------------

ADD ON UNITS

Add on unit—enable 2 units to be joined. (Starter unit + add on unit)
It consists of 4 shelves and 1 central post.

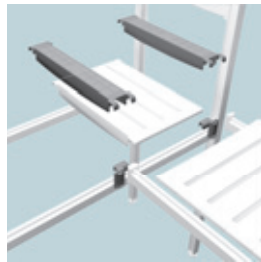
SHT19	4 Tier Add on Unit	885W x 450D x 1700mmH
SHT20	4 Tier Add on Unit	885W x 600D x 1700mmH
SHT12	4 Tier Add on Unit	1185W x 300D x 1700mmH
SHT13	4 Tier Add on Unit	1185W x 450D x 1700mmH
SHT14	4 Tier Add on Unit	1185W x 600D x 1700mmH
SHT15	4 Tier Add on Unit	1485W x 450D x 1700mmH
SHT16	4 Tier Add on Unit	1485W x 600D x 1700mmH
SHT17	4 Tier Add on Unit	1785W x 450D x 1700mmH
SHT18	4 Tier Add on Unit	1785W x 600D x 1700mmH

CORNER KITS

Used in conjunction with add-on units.

Corner kits are sold in pairs—4 pairs required per 4 tier add-on unit.

SHT21	Corner Kit for 300mm shelf
SHT22	Corner Kit for 450mm shelf
SHT23	Corner Kit for 600mm shelf



Corner kit shown in dark grey.



ACCESSORIES



Interframe Bar—1450mm
SHT45
*Special Order



Aluminium Tube—600mm
For hanging food products
SHT44

TONON SHELVING DESIGNED AND MANUFACTURED IN ITALY.



Code	Description
------	-------------

HIGH DENSITY SHELVING SYSTEM

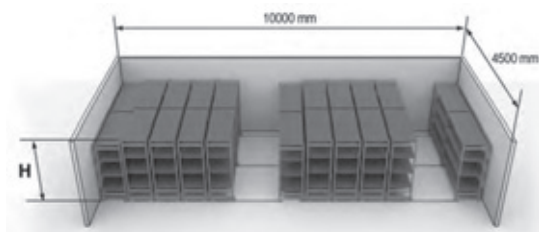
Can increase the shelf area compared to a traditional fixed shelving system.

The lowest shelf is placed 320mm from the floor to allow for easy sweeping and cleaning.

The slats are removed in seconds and suitable for cleaning in dishwashers.

The EKO FIT HIGH DENSITY SHELVING SYSTEM does not require any specific tools or fixings.

EKO FIT HIGH DENSITY SHELVING SYSTEM is available in any length and width.



H = 1650mm / 1800mm / 2100mm

Assembly

Quick and easy bolt and tool free assembly. The shelves are self-bearing and they don't need any type of anchoring to the floor, wall, transversal or diagonal.



Available on special order.

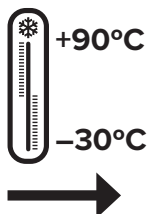
TONON
Eko Fit



To see how easy Tonon shelving is to assemble, scan this code.

Easy to Clean

The Eko Fit shelving system is easy to clean thanks to the absence of bolts and other parts on the frames. Shelf slats are easy to remove and run through a dishwasher.





COATING PROCESS

Multiple wash & degrease

▼
phosphate

▼
multiple wash

▼
drying oven

▼
spraying booth

▼
oven cure

▼
finished product

LEADER SHELVING SYSTEMS

Code	Description
------	-------------

AVAILABILITY

Because LEADER silver grey shelving is so popular we hold stocks of all shelf widths and lengths. That means you will rarely have to wait for the products you need.

CAPACITY

Each heavy duty shelf is reinforced with 4.8mm diameter wire. Dependant on size, each shelf can hold up to 400kg in weight; more than enough for every application.

APPEARANCE

LEADER silver grey finish is contemporary and stylish. It looks so good it can be used in display locations whilst being practical enough for back of house storage.

DURABILITY

All LEADER products are finished to withstand heavy commercial use. Our coating process ensures maximum protection against corrosion even in the moist atmosphere of a cold room.

EASE OF USE

Simple to purchase, simple to install—that's what LEADER offers. The open wire design means it is a lighter weight than non-wire shelving, making it easier to freight, erect and move.

STRENGTH

360 Mpa UTS Steel is at the core of all LEADER products. Combine steel's strength with exceptional engineering quality and you can understand why LEADER is better than or equal to all comparable shelving systems.

VERSATILITY

By choosing LEADER silver grey finish you have a product suitable for all environments. With four standard widths and a multitude of lengths you can fit LEADER shelving into any configuration.

VALUE

No other wire shelving product offers the exceptional value-for-money of LEADER. Our product combines the qualities you require in a market leading product with an affordable price.

HYGIENE

Wire shelving has far less surface area to collect spillages, dirt and debris. The whole unit can be easily washed or sprayed without damaging the coating.

SHELVING—FULLY MODULAR

LEADER

Code	Description
------	-------------

Shelf Sizing

LEADER shelves are available as 4 tier units complete with shelves, posts and sleeves.

4-TIER SHELVING with Posts (1880mm high)

Product Code	Width (mm)
--------------	------------

300mm deep

SHD1	1065
SHD6	1525

455mm deep

SHD11	900
SHD2	1065
SHD4	1220
SHD7	1525
SHD9	1830

610mm deep

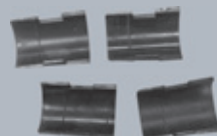
SHD12	900
SHD3	1065
SHD5	1220
SHD8	1525
SHD10	1830

Accessories

Product Code

SHD13	Shelf Clip—Set of 4
-------	---------------------

LEADER posts are fitted with adjustable feet as standard.



SHD13



SD9-SD10



HSK16



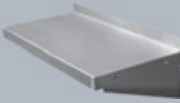
HSK18



SD4



SD13



SD15



HL71, HL75



HL76



HT17



HT16

STORAGE SOLUTIONS

Code	Description
------	-------------



Z Frame Bakers Trolley

- Satin polished finish
- 18 levels
- 1.5mm heavy duty runners

SD9 Fits 406mmD bakers trays
Can take either:
• 18 x (400D x 600mmW) trays or
• 18 x (406D x 730mmW) trays
Frame Dimensions: 740W x 460D x 1800mmH

SD10 Fits 457mmD bakers trays & 457mmD x 660mmD American bun pans
Can take either:
• 36 x (457D x 330mmW) trays or
• 18 x (457D x 660mmW) trays or
• 18 x (460D x 730mmW) trays
Frame Dimensions: 740W x 510D x 1800mmH



Z frame design enables nested storage—reducing storage space requirements.

Bakers Rack Covers

HSK16 16" Green
HSK18 18" Blue



Gastronorm Trolley Z Frames

- Stainless Steel Z framing, suits steam pans and gastronorm containers
- Satin polished finish
- 18 levels
- 1.5mm heavy duty welded runners—with end stops

SD4 390W x 540D x 1780mmH
SD13 590W x 665D x 1780mmH



Wall Shelf

SD15 • 900W x 300mmD
• Satin polished finish
• Brackets included

Tote Bins Nests

HL71 600 x 413 x 172mm
HL75 500 x 380 x 150mm
HL76 615 x 420 x 260mm with Lid



Trust Tote Bins

- Lid snaps tight, keeping contents secure
 - Reinforced rib bottom allows product to be dragged
- HT16 53 Litre, Grey, 708W x 434D x 272mmH
HT17 75 Litre, Grey, 708W x 434D x 384mmH

STORAGE SOLUTIONS

Code	Description
------	-------------

Hooks

HNB2	Stainless Steel 10cm—pack of 10
HK44	Stainless Steel 10cm
HK45	Stainless Steel 16cm
HTK799	Stainless Steel 16cm—fixed

**Ingredient Bins**

HG69	Sliding lid, comes with scoop, 102L capacity 394W x 750D x 755mmH
HG72	Sliding lid, comes with scoop, 80L capacity 330W x 750D x 710mmH

Shelf Ingredient Bins

HG1	8 Litre, 300W x 380D x 220mmH
HG2	20 Litre, 290W x 600D x 435mmH
HG3	40 Litre, 600W x 490D x 440mmH

Space Saver Containers

HST3	with Lid, 2L
HST4	with Lid, 4L
DOP1	with Lid 1L

Plastic Bucket with Lid

HST1	Foodgrade, stackable, 10L
HST2	Foodgrade, stackable, 20L

**Storage Containers with Lids—Graduated**

HG84	182 x 182 x 190mm, 4L
HG85	225 x 225 x 230mm, 8L
HG86	285 x 285 x 210mm, 12L
HG87	285 x 285 x 400mm, 22L

**Polypropylene White Food Containers**

HJB6	45.5 x 30 x 23cm, 19L
HJB4	66 x 45.5 x 16cm, 32L
HJB3	66 x 45.5 x 31.5cm, 62.5L
HJB7	Container Cover, 45.5 x 30 x 3cm
HJB5	Container Cover, 66 x 45.5 x 1.5cm

* Covers sold separately



HK44-HK45



HG69

HG72



HG1-HG3



HST3

HST4

DOP1



HST1

HST2

HG84

HG87



HG86

HG85



HJB3

HJB4

HJB6

PLASTIC STORAGE SOLUTIONS

Code	Description
------	-------------



Ucsan Click and Lock Containers—airtight silicone seal

HUM493	120L x 185W x 65mmH, 1.1L
HUM495	260L x 180W x 90mmH, 2.6L
HUM496	260L x 180W x 140mmH, 4.5L
HUM497	300L x 230W x 90mmH, 4.4L
HUM498	300L x 230W x 200mmH, 10L
HUM499	300L x 230W x 120mmH, 5.5L



Plastic Containers with Lid

ASY24	158 x 114 x 88mmH, 1L
ASY25	224 x 128 x 78mmH, 2L
ASY23	184 x 184 x 194mmH, 4.4L
ASY26	278 x 278 x 134mmH, 8L
ASY27	318 x 318 x 138mmH, 10L
ASY28	374 x 374 x 148mmH, 16L



PLASTIC STORAGE SOLUTIONS

Code	Description
------	-------------

Plastic Jugs

HUM102 Blue lid, 2L

HBP6 Round, 1.2L

HCH200 Clear, 1L

Platinum Plated Storage Container

AP1 With window, 1.4L

Cutlery Boxes

HG23 4 Compartment, Black

HG24 4 Compartment, Grey

Perforated Flatware Cylinders

HSG54 18/8 Stainless Steel

HL12 Plastic

STAINLESS STEEL STORAGE SOLUTIONS

Condiment Holder

HL13 6 compartment

6 Hole 2 Tier Cutlery Cylinder Holder

HK108 Cylinders not included



HUM102



HBP6



HCH200



AP1



HG23



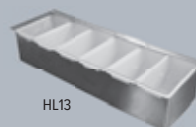
HG24



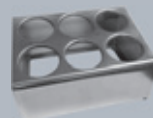
HL12



HSG54



HL13



HK108



SD14

SD12



SS71



HZ7

HZ8



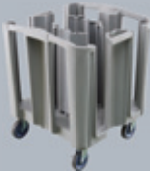
HB20



HZ22-HZ23



HG62



HT55



HG71

TROLLEYS

Code	Description
------	-------------



3 Tier Trolleys

SD14	850mmW x 530mmL, Stainless Steel
SD12	710mmW x 460mmL, Stainless Steel



SS71	Stainless Steel, 800W x 500D x 900mmH
------	---------------------------------------



HZ7	1030W x 510D x 960mmH, Black
HZ8	1030W x 510D x 960mmH, Grey

HB20	3 Tier Multi-Purpose Trolley 800W x 410D x 940mmH
------	--

Bins for Trolleys

HZ22	Refuse Bin, 337 x 231 x 560mm, Black
HZ23	Flatware Bin, 337 x 231 x 187mm, Black

Bins fit H27/H28 and HB20

CADDIES

Dish Caddy

HG62	Adjustable for 240 plates, 930 x 720 x 820mmH 6 Tube/Stack
------	---

HT55	Trust adjustable dish caddy for 240 to 540 plates Stores 108mm to 298mm plate and bowls
------	--

Sliding Ice Caddy

HG71	Grey, 125L Drainage tap Insulated wall 600 x 820 x 740mmH
------	--

TROLLEYS

Code	Description
------	-------------

Large Two Shelf Utility Cart

HT20

- Black • 227kg load • 12.5cm castors
- Sturdy, structural foam construction—won't dent, chip or peel
- User friendly handles provide comfortable and easy maneuverability and help to reduce wrist and back strain
- 1150W x 641D x 987mmH

Medium Two Shelf Utility Cart

HT21

- Black • 227kg load • 12.5cm castors
- Sturdy, structural foam construction—won't dent, chip or peel
- User friendly handles provide comfortable and easy maneuverability and help to reduce wrist and back strain
- 978W x 435D x 987mmH

Three Shelf Utility Cart

HT18

- Black • 90kg load
- Versatile, functional and a workhorse in any facility
- Moulded shelves—won't dent, chip or peel
- Non-marking castors
- 854W x 473D x 960mmH

Three Shelf Utility Cart with Panels on Three Sides

HT19

- Black • 135kg load
- Versatile, functional and a workhorse in any facility
- Moulded shelves—won't dent, chip or peel
- Non-marking castors
- 1032W x 508D x 960mmH

Platform Trolley

HT22

- Black • 230kg load
- Sturdy structural foam deck—won't dent, chip or peel
- Non-skid platform surface helps prevent load shifting
- Three position handle lets users push, pull or fold flat for use as a dolly
- 826D x 521mmW

Trust



HT20



HT21



HT18



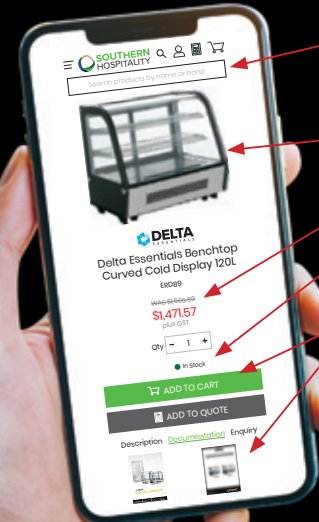
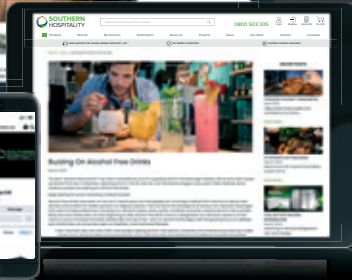
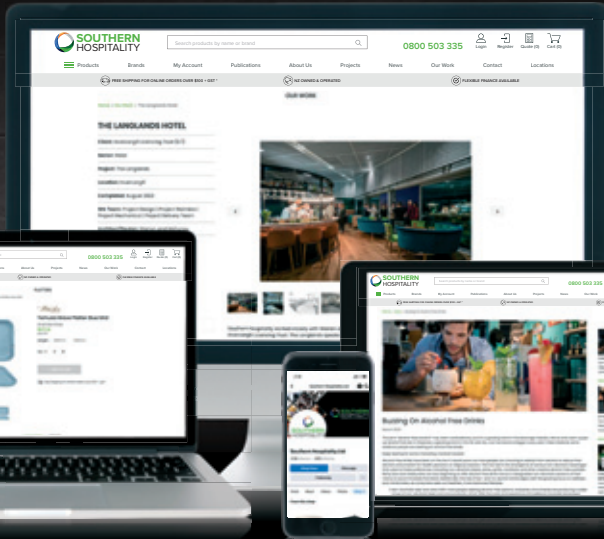
HT19



HT22

ONLINE STORE

ORDER ANYTIME, ANYWHERE, ON ANY DEVICE



Easy Search Function

Search for a product from a particular category.

Quick Access to Product Details

- Image
- Pricing
- Stock Information
- Detailed product information (such as dimensions, services, user manuals)

Seamlessly order anytime, anywhere, on any device!

To Activate Your Account

Please provide your sales rep with the correct email address/es to be used as your username. If you do not have these details, give us a call on **0800 503 335** or email us at **online@southernhospitality.co.nz**

Once your username has been processed, a welcome email will be sent to you and you can begin ordering online.

Sort your orders anytime, anywhere, on any device!



FOLLOW US
& STAY CONNECTED!

