

ERE65, ERE63



ERE66, ERE64



ERE56, ERE60



ERE57, ERE61



ERE58, ERE62

SUMMIT CHILLERS AND FREEZERS

Code	Description
------	-------------

EuroChill's Summit range gives you quality refrigeration with style and performance. A sleek, modern look and designed with practicality and ergonomics in mind. High performance compressors ensure these units are rated to run at an ambient temperature up to 43°C.

- Maximised and convenient storage capacity
- Environment friendly gas refrigerant—models have either R290 or R600a gas refrigerant
- EuroChill's Summit range offers a 2 year warranty (conditions apply)

UPRIGHT CHILLERS AND FREEZERS

- Bottom mount compressor for easy access for servicing

Single Door

ERE65	Chiller
ERE63	Freezer

- Capacity: 610L
- No. of shelves: 3
- 685W x 800D x 2135mmH

Double Door

ERE66	Chiller
ERE64	Freezer

- Capacity: 1335L
- No. of shelves: 3 per door
- 1382W x 800D x 2135mmH

UNDERCOUNTER CHILLERS AND FREEZERS

- Wide doors on larger models for easy access of trays

1200mm—Double Door

ERE56	Chiller
ERE60	Freezer

- Capacity: 270L
- No. of shelves: 1 per door
- 1200W x 700D x 840mmH

1500mm—Double Door (wide)

ERE57	Chiller
ERE61	Freezer

- Capacity: 370L
- No. of shelves: 1 per door
- 1500W x 700D x 840mmH

1800mm—Three Door

ERE58	Chiller
ERE62	Freezer

- Capacity: 470L
- No. of shelves: 1 per door
- 1800W x 700D x 840mmH

COMPACT CHILLERS AND FREEZERS

Code	Description
------	-------------

This compact size is perfect for any kitchen area restricted by size constraints without wanting to compromise on aesthetics, quality and performance. Available in both single and double door. Refrigerator and freezer options. As well as a dual temperature model.

- Top mounted compressor fully removable for easy access of servicing and replacement
- Environment friendly gas refrigerant—models have either R290 or R600a gas refrigerant
- Stable doors for efficiency of cold air retention
- 2 year warranty (Conditions apply)

UPRIGHT CHILLERS AND FREEZERS

Single Door

ERE50	Chiller (Split doors)
ERE52	Freezer (Split doors)

- Capacity: 410L
- No of Shelves: 3 plus floor
- Dimensions: 600W x 740D x 1950mmH

Double Door

ERE51	Chiller (Split doors)
ERE53	Freezer (Split doors)

- Capacity: 900L
- No of Shelves: 3 plus floor per side
- Dimensions: 1200W x 740D x 1950mmH

Dual Temperature

ERE54	2 Door Fridge/Freezer (Split doors)
-------	-------------------------------------

- Capacity: 855L
- No of Shelves: 3 plus floor per side
- Dimensions: 1200W x 740D x 1950mmH

Chiller

ERE46

- Capacity: 145 litre
- 304 stainless steel
- Temp range: 1°C to 8°C
- On castors
- 605W x 635D x 825mmH

Freezer

ERE47

- Capacity: 145 litre
- 304 stainless steel
- Temp range: -18°C to -22°C
- On castors
- 605W x 635D x 825mmH



ERE50, ERE52



ERE51, ERE53



ERE46, ERE47





ERE67



ERE68



ERE69



ERE70



ERE71

COMPACT CHILLERS AND FREEZERS

Code	Description
------	-------------

Salad Prep Chillers

2 Door

ERE67

- Two door salad counter with open top for garnish pans
- Holds 6 x 1/6 GN pans (not included)
- Bottom mounted compressor
- Temp range: +2~+8°C
- Dimensions: 900W x 700D x 970mmH
- Pans not included
- Board Dimensions: 900W x 436mmD

2 Door

ERE68

- Capacity: 340L—holds 6 x 1/3 GN pans (not included)
- Operating temp: +1 to +8°C
- No. of shelves: 1 per side plus floor
- Dimensions: 1225W x 762D x 1109mmH
- Board Dimensions: 1220W x 235mmD

2 Door Salad Prep Chiller

ERE69

- Capacity: 516L—holds 8 x 1/3 GN pans (not included)
- Operating temp: 1 to 8°C
- 1524W x 235D x 1300mmH
- Board Dimensions: 1524W x 235D x 13mmH

3 Door

ERE70

- Capacity: 538L—holds 9 x 1/3 GN pans (not included)
- Operating temp: +1 to +8°C
- No. of shelves: 1 per side plus floor
- Dimensions: 1846W x 762D x 1109mmH
- Board Dimensions: 1840W x 235mmD

Pizza Counter Pizza Prep Table

2 Door

ERE71

- Capacity: 566L—holds 9 x 1/3 GN pans (not included)
- Temp Range: +1 to +8°C
- Dimensions: 1701W x 840D x 1035mmH
- Board Dimensions: 1697W x 490mmD

DELTA UPRIGHT STAINLESS SOLID DOOR CHILLERS AND FREEZERS

Code	Description	
	<ul style="list-style-type: none"> • Complete structure in stainless steel AISI 304 • Insulation thickness 60mm • Ventilated cooling with built-in evaporator • Automatic defrost, automatic evaporation of the condensate • Electronic thermostat • Self-closing door and lock as standard • Easily replaceable gaskets • 4 x heavy-duty castors (2 x lockable) • 4 shelves GN 650 x 530 for each door • Working temperature: <ul style="list-style-type: none"> +2 to +8°C for the chiller version -15 to -25°C for the freezer version • Environment friendly gas refrigerant—models have either R290 or R600a gas refrigerant 	
ERD126	1 Door Chiller	740W x 830D x 2010mmH
ERD124	1 Door Freezer	740W x 830D x 2010mmH

ERD127	2 Door Chiller	1480W x 830D x 2010mmH
ERD125	2 Door Freezer	1480W x 830D x 2010mmH



ERD126, ERD124



ERD127, ERD125





DELTA REFRIGERATED UNDERCOUNTER

Code	Description
------	-------------

Stainless Solid Door Undercounter Chillers and Freezers

- AISI 304 stainless steel framework construction
- 60mm insulation
- Environment friendly gas refrigerant—models have either R290 or R600a gas refrigerant
- Electronic control panel with digital display
- Automatic defrosting and self evaporating
- Removable condensing unit
- Magnetic gaskets and self closing doors
- Refrigerated drawers with AISI 304 stainless steel telescopic guides*
- Anticorrosion treated evaporator
- Heavy-duty castors (2 x lockable)

ERD132	2 Door Chiller	1360W x 700D x 860mmH
ERD133	2 Door Chiller (Left Compressor)	1360W x 700D x 860mmH
ERD128	2 Door Freezer	1360W x 700D x 860mmH
ERD134	3 Door Chiller	1795W x 700D x 860mmH
ERD135	3 Door Chiller (Left Compressor)	1795W x 700D x 860mmH
ERD129	3 Door Freezer	1795W x 700D x 860mmH
ERD136	4 Door Chiller	2230W x 700D x 860mmH

Delta Undercounter Chiller Drawer Units

ERD137	4 Drawer	1360W x 700D x 860mmH
ERD138	6 Drawer	1795W x 700D x 860mmH

Single Door Chiller

- ERD130
- Temperature range: 2–8°C at 32°C ambient
 - 129 litre capacity
 - 3 shelves
 - 600W x 600D x 855mmH
 - For light duty applications
 - No castors

Single Door Freezer

- ERD131
- Temperature range: <-18°C at 32°C ambient
 - 129 litre capacity
 - 3 shelves
 - 600W x 600D x 855mmH
 - For light duty applications
 - No castors

DELTA REFRIGERATED COUNTERS & DISPLAYS

Code	Description
------	-------------

Delta Pizza Prep Display Chiller

ERD142

- 2000W x 395D x 435mmH
- Pans not included

Delta Refrigerated Display for Pizza and Sandwich Toppings

- Electronic thermostat
- Complete structure in stainless steel AISI 304
- Static cooling continuous evaporator, without welding completely foamed

ERD141	5 x 1/3 GN pans	1200W x 380D x 435mmH
--------	-----------------	-----------------------

- Pans not included

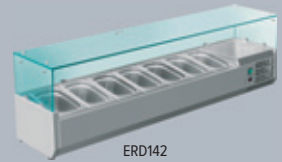
DELTA CHEST FREEZERS

ERD122

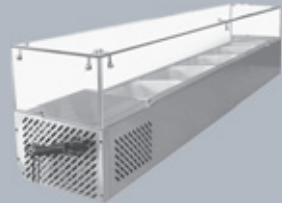
- 1191W x 670D x 855mmH
- Stainless steel lid
- 312 litres capacity

ERD123

- 1605W x 730D x 960mmH
- Stainless steel lid
- 526 litre capacity



ERD142



ERD141



ERD122, ERD123





ERD1

ERD3



ERD5

ERD6



ERD37



ERD38, ERD39

DELTA REFRIGERATION

Code	Description
------	-------------

Delta Upright Glass Door Chillers and Freezers

- Powder coated interior and exterior
- Top mounted refrigeration system
- Self closing doors with fixed open position at 100°
- Adjustable shelving and interior LED lights
- Heavy-duty castors (2 x lockable)
- Freezer refrigerant R404A, chiller refrigerant R134A
- +1°C ~ +8°C, -17°C ~ -22°C

Single Door Chiller

ERD1 750W x 830D x 2040mmH

- Standard hinged right side. Also available left hinged if required.
- Model of left hinged is ERD2

Single Door Freezer

ERD3 750W x 830D x 2040mmH

Double Door Chiller

ERD5 1260W x 730D x 2040mmH

Double Door Freezer

ERD6 1260W x 730D x 2040mmH

Delta Upright Double Door Beverage Chiller

ERD37

- Capacity: 1000 litres
- 240V/50Hz, 10 amp
- Operating temperature +2°C to +10°C
- Double glazed hinged doors
- Fan cooling system with self evaporation water tray
- 4 castors—2 with locks
- Self closing doors
- 4 shelves per door (8 total)
- 2 vertical lights and illuminated sign
- Comes with lock and key
- Digital control with LED display and defrost timer
- 1130W x 720D x 2020mmH

Delta Upright Single Door Beverage Chiller

- Double glazed, front tempered glass door
- 5 wire shelves
- 4 heavy duty castors (2x lockable)
- Comes with lock and key and single vertical light
- Fan cooling system and refrigerant—R134A

ERD38 400L

- 600W x 620D x 2020mmH

ERD39 660L

- 700W x 790D x 2020mmH

BOTTLE COOLERS & ICE CREAM/GELATO MAKER

Code	Description
------	-------------

- Black powdercoat finish and 2 shelves per door
- Self evaporating and digital control
- Self closing door and key lock standard

2 Door Bottle Cooler

ERD71

- Backbar chiller with 2 sliding doors
- Capacity: 210L
- Dimensions: 900 x 520 x 850mmH

3 Door Bottle Cooler

ERD72

- Backbar chiller with 3 sliding doors
- Capacity: 320L
- Dimensions: 1350 x 520 x 850mmH

Backbar Undercounter Glass Swing Door

ERD139 2 Door 350L 1462W x 535D x 860mmH

ERD140 3 Door 537L 2002W x 535D x 860mmH

Ice Cream / Gelato Maker

EAA12

- Capacity: 2L
- 260W x 290D x 370mmH



ERD71



ERD72



ERD139



ERD140

magimix

EAA12



LIEBHERR

EAA8

WINE FRIDGE

Code	Description
------	-------------

WKB 4612 Bordeaux Bottle Wine Fridge Cabinet

EAA8

- Store up to 186 Bordeaux bottles
- Temperature range: 5–20°C
- 6 beech wood shelves
- Reversible triple glazed UV protected door with lock
- 660W x 670D x 1840mmH

LIEBHERRwww.southernhospitality.co.nz

Storage and display products from Liebherr are robust, compact and energy efficient whilst providing the ideal storage conditions for fine wines and frozen foods.



Contact Southern Hospitality today to discuss your equipment needs for your business.

DISPLAY FREEZERS

Code	Description
------	-------------

EFI2803 Display Freezer

EAA9

- Capacity: 276 litre
- Curved sliding glass lid
- Ice cream/gelato freezer with curved glass lid
- 1045W x 660D x 825mmH

EFE2103 Display Freezer

EAA17

- Capacity: 206L
- Curved glass sliding
- 835W x 660D x 825mmH

EFE3852 Display Freezer

EAA19

- Capacity: 396L
- With flat glass lid + LED lights
- 1255W x 680D x 825mmH

LIEBHERR



EAA9



EAA17



EAA19






ERS284



ERS191



ERS282



ERS283



ERS223



ERS160



ERS224

SKOPE FRIDGES

Code	Description
------	-------------

SKOPE Ezicore Series

The SKOPE EziCore redefines value. The EziCore range of bottom and top-mount glass door merchandisers ticks every box for cost-conscious operators with SKOPE technology, build quality, and truly green performance. With low energy consumption, low noise and LED lights to make your products pop, EziCore will drive exceptional sales results.

- Top mount or bottom mount Ezicore refrigeration unit
- Market leading R290 natural refrigerant with minimal environmental impact
- Double glazed door with built in LED lights
- Low heat discharge and low noise output
- Engineered to serve cold drinks at 0°C to +5°C in ambient environments of up to 35°C

SKOPE EziCore TCE650N 1 Glass Door Top Mount Upright Fridge

ERS284 557L capacity
740W x 750D x 2210mmH (include castors)

Skope Ezicore TCE1000N 2 Glass Door Top Mount Upright Fridge

ERS191 896L capacity
1130W x 730D x 2200mmH (include castors)

SKOPE EziCore BCE600N 1 Glass Door Bottom Mount Upright Fridge Black

ERS282 559L capacity
740W x 795D x 2205mmH (include castors)

SKOPE EziCore BCE1200N 2 Glass Door Bottom Mount Upright Fridge Black

ERS283 1030L capacity
1280W x 795D x 2205mmH (include castors)

SKOPE ActiveCore 2 Series

Fridges with ActiveCore technology reduce energy spend and widen the practical uses of the fridge—with an extensive range of options to choose from, a refrigeration solution can be created whatever the need.

SKOPE TME ActiveCore 2 Series

- Top mount ActiveCore refrigeration unit
- Market leading R290 natural refrigerant with minimal environmental impact
- Premium energy efficient glass
- Low noise fan system for quieter operation
- +1°C to +4°C ambient (adjustable via SKOPE-connect™)

SKOPE ActiveCore 2 TME650N-A 1 Glass Door Top Mount Fridge

ERS223 610L capacity
740W x 747D x 2207mmH (excludes castors or legs)

SKOPE ActiveCore 2 TME1000N-A 2 Glass Door Top Mount Fridge

ERS160 980L capacity
1130W x 745D x 2200mmH (excludes castors or legs)

SKOPE ActiveCore 2 TME1500N-A 3 Glass Door Top Mount Fridge

ERS224 1497L capacity
1705W x 745D x 2200mmH (excludes castors or legs)

SKOPE FRIDGES AND FREEZERS

Code	Description
------	-------------

SKOPE TMF ActiveCore Freezer series

- Top mounted refrigeration
- Heavy duty single glass door
- ActiveCore technology offering levels of quiet efficiency
- Digital inverter compressor for precise temperature control
- Temperature range: -21°C to 18°C
- Maximum ambient temperature: 40°C
- Eco-friendly R290 natural refrigerant technology

Skope Active Core TMF650N-A 1 Glass Door Upright Freezer

ERS247 610L capacity 740W x 745D x 2210mmH

Skope Active Core TMF1000N-A 2 Glass Door Upright Freezer

ERS248 980L capacity 1130W x 745D x 2210mmH

SKOPE Serene HB80-2 General Purpose Countertop Series

ERS12 80L capacity 560W x 500D x 770mmH

SKOPE Serene SC430N Single Door Glass Chiller

ERS245

- Capacity: 396L
- 5 adjustable shelves
- Bottom mount refrigeration system
- R290 natural refrigerant
- 660W x 630D x 2208mmH

SKOPE Serene SC112N-A 4 Glass Sided Chiller

ERS115

- Capacity: 109L
- 1 x front and 1 rear swing glass doors
- Bottom mount refrigeration system
- 4 x vertical corner LED lights (total 8W)
- 470W x 470D x 1175mmH (excluding stand)

SKOPE Open Deck Fridges

An energy efficient, low maintenance, open-faced merchandiser designed to replace your existing double-glass door chillers.

- Display case illuminated by energy efficient fluorescent lights to optimise your product presentation
- High capacity stainless steel condensate tray is easy to remove for cleaning
- 10 amp power supply
- Operating temperatures 0°C to 5°C in 25°C ambient and maximum humidity of 60%

ERS239—OD260 Open deck chiller 650W x 735D x 1400mmH

ERS285—OD400 Grab n Go Cabinet 905 W x 660 D x 1360mmH

ERS286—OD460N Grab n Go Cabinet 1205 W x 660 D x 1300mmH

ERS287—OD1100N.LS Low Sign Grab n Go Cabinet
1272 W x 836 D x 2019 mmH (Low Sign)

ERS288—OD1100N.HS High Sign Grab n Go Cabinet
1272 W x 836 D x 2204mmH (High Sign)

SKOPE®



ERS247



ERS248



ERS12



ERS245



ERS115



ERS239



ERS285



ERS286



ERS287



ERS288



ERS228



ERS230



ERS246



ERS231



ERS225



ERS226



ERS227

SKOPE FRIDGES

Code	Description
------	-------------

SKOPE SKT ActiveCore 2 Series

- Anti-condensation protection
- Top mount refrigeration unit with either a sign replacement panel or illuminated sign
- Digital Controller with door activated 1 × 20W (1400mm) LED module strip RH side light
- Adjustable legs (150–180mm) or castors (95–110mm)
- 1°C to 4°C (adjustable up to 15°C) in 43°C
- LED module lighting
- Minimise waste and maximise ROI with the SKOPE-connect™ commercial fridge management app
- Optional light box available

SKOPE ActiveCore 2 SKT500-XW Top Mount 1 Glass Door Fridge

ERS228	445L capacity and 1°C to 4°C (adjustable up to 15°C) in 43°C 570W x 745D x 2200mmH (excludes castors or legs)
--------	--

SKOPE ActiveCore 2 SKT1000N-A Top Mount 2 Glass Door Fridge

ERS230	980L capacity and +1°C to +4°C in 43°C ambient 1130W x 745D x 2200mmH (excludes castors or legs)
--------	---

SKOPE ActiveCore 2 SKT1300N-A Top Mount 2 Glass Door Fridge

ERS246	1310L capacity and +1°C to +4°C in 43°C ambient 1480W x 745D x 2200mmH (excludes castors or legs)
--------	--

SKOPE ActiveCore 2 SKT1500N-A Top Mount 3 Glass Door Fridge

ERS231	1497L capacity and +1°C to +4°C in 43°C ambient 1705W x 745D x 2200mmH (excludes castors or legs)
--------	--

SKOPE BME ActiveCore 2 Series

- Bottom mount ActiveCore refrigeration unit
- Market leading R290 natural refrigerant with minimal environmental impact
- Premium energy efficient glass
- Low noise fan system for quieter operation
- +1°C to +4°C ambient (adjustable via SKOPE-connect™)
- Optional light box available

SKOPE ActiveCore 2 BME600N-A Bottom Mount 1 Glass Door Fridge

ERS225	584L capacity 740W x 795D x 2005mmH (excludes castors or legs)
--------	---

SKOPE ActiveCore 2 BME1200N-A Bottom Mount 2 Glass Door Fridge

ERS226	1079L capacity 1280W x 795D x 2005mmH (excludes castors or legs)
--------	---

SKOPE ActiveCore 2 BME1500N-A Bottom Mount 3 Glass Door Fridge

ERS227	1433L capacity 1640W x 795D x 2005mmH (excludes castors or legs)
--------	---

SKOPE REFLEX SERIES FRIDGES & FREEZERS

Code	Description
------	-------------

SKOPE Stainless Steel Underbench Fridge and Freezer

- Solid doors—stainless steel, self-closing, lockable, swing
- External and internal—304 AISI stainless steel
- Temperature range: -1 to 5°C (adjustable with SKOPE-connect™ -2 to 10°C)
- Maximum ambient temperature: -40°C
- Monitor and control with the SKOPE-connect™ app
- Refrigerant: R290 natural refrigerant
- Front breathing refrigeration system to save space
- Fan forced ducted airflow for consistent temperature for food safety
- Door activated interior LED lighting
- Key locks on all doors
- Self-closing, self-sealing doors
- Replaceable long-life magnetic door gaskets
- GN compatible—fits GN 1/1 trays
- Supplies with lockable front castors, non-locking rear castors (135mm) and a set of adjustable legs (145–185mm)

SKOPE REFLEX Single Door Fridge and Freezer

ERS181	RF6.UBR.1.SD	Fridge	600W x 635D x 850mmH
ERS184	RF6.UBF.1.SD	Freezer	600W x 635D x 850mmH

SKOPE REFLEX Two Door Fridge and Freezer

ERS151	RF7.UBR.2.SD	Fridge	1290W x 700D x 855mmH
ERS163	RF7.UBF.2.SD	Freezer	1290W x 700D x 855mmH

SKOPE REFLEX Three Door Fridge and Freezer

ERS152	RF7.UBR.3.SD	Fridge	1750W x 700D x 855mmH
ERS164	RF7.UBF.3.SD	Freezer	1750W x 700D x 855mmH

SKOPE REFLEX Four Door Fridge

ERS154	RF7.UBR.4.SD		2210W x 700D x 855mmH
--------	--------------	--	-----------------------

SKOPE Stainless Steel Underbench Fridge Drawers

- External and internal—304 AISI stainless steel
- Maximum ambient temperature: -40°C
- Monitor and control with the SKOPE-connect™ app
- Refrigerant: R290 natural refrigerant
- Removable refrigeration cartridge
- Individual drawer locks
- Takes 100mmD GN pans

SKOPE REFLEX 6 Drawer (2 x 3) Underbench Fridge

ERS178	RF7.UBR.2.D6		1290W x 700D x 855mmH
--------	--------------	--	-----------------------

SKOPE REFLEX 9 Drawer (3 x 3) Underbench Fridge

ERS179	RF7.UBR.3.D9		1750W x 700D x 855mmH
--------	--------------	--	-----------------------

SKOPE Reflex RF8.CBR.1.D2 Chefs Base 2 Drawers

- | | | | |
|--------|--|--|----------------------|
| ERS257 | | | 925W x 815D x 610mmH |
|--------|--|--|----------------------|
- Cabinet internal volume: 147L
 - GN Compatible—fits GN 1/1 and 1/6 trays, up to 100mm deep

SKOPE Reflex RF8.CBR.2.D4 Chefs Base 4 Drawers

- | | | | |
|--------|--|--|-----------------------|
| ERS258 | | | 1838W x 815D x 610mmH |
|--------|--|--|-----------------------|
- Cabinet internal volume: 371L
 - GN Compatible—fits GN 1/1 and 1/6 trays, up to 100mm deep



ERS181 / ERS184



ERS151 / ERS163



ERS152 / ERS164



ERS154



ERS178



ERS179



ERS257



ERS258



ERS166 / ERS169



ERS167 / ERS172



ERS173



ERS241



ERS242



ERS243



ERS244

SKOPE REFLEX SERIES FRIDGES & FREEZERS

Code	Description
------	-------------

SKOPE Upright Fridge and Freezer

- Monitor and control with the SKOPE-connect™ app
- 5 levels of adjustable and removable tray slides
- External and internal—304 AISI stainless steel
- Refrigerant: R290 natural refrigerant
- Maximum ambient temperature: -40°C

SKOPE REFLEX Single Door Fridge and Freezer

ERS166	RF7.UPR.1.SD	Fridge	680W x 760D x 1985mmH
ERS169	RF7.UPF.1.SD	Freezer	680W x 760D x 1985mmH

SKOPE REFLEX Two Door Fridge and Freezer

ERS167	RF7.UPR.2.SD	Fridge	1220W x 760D x 1985mmH
ERS172	RF7.UPF.2.SD	Freezer	1220W x 760D x 1985mmH

SKOPE REFLEX Two Door Fridge / Freezer

ERS173	RF8.UPC.2.SD		1400W x 820D x 2035mmH
--------	--------------	--	------------------------

SKOPE Solid Door Salad and Pizza Prep Fridges

- Monitor and control with the SKOPE-connect™ app
- 5 levels of adjustable and removable tray slides
- External and internal—304 AISI stainless steel
- Refrigerant: R290 natural refrigerant
- Maximum ambient temperature: -40°C
- Interior lighting—3 x 400mm 4W LED lights (door activated)

SKOPE REFLEX Two Door Salad Prep Fridge

ERS241	RF7.PPS.2.SD	4 x 1/3 GN	1270W x 700D x 1110mmH
--------	--------------	------------	------------------------

SKOPE REFLEX Three Door Salad Prep Fridge

ERS242	RF7.PPS.3.SD	7 x 1/3 GN	1800W x 700D x 1110mmH
--------	--------------	------------	------------------------

SKOPE REFLEX Three Door Pizza Prep Fridge

ERS243	RF8.PPZ.3.SD	9 x 1/3 GN	1800W x 800D x 1140mmH
--------	--------------	------------	------------------------

SKOPE REFLEX Four Door Pizza Prep Fridge

ERS244	RF8.PPZ.4.SD	12 x 1/3 GN	2285W x 800D x 1140mmH
--------	--------------	-------------	------------------------

SKOPE FRIDGES

Code	Description
------	-------------

SKOPE BackBar Fridges

- High efficiency premium glass self-closing swing door bar fridge
- Market-leading dimmable LED full height strip lighting
- Lockable doors
- Quieter running with built in hush mode
- Temperature range: 1°C to 4°C
- Maximum ambient temperature: 40°C
- Eco-friendly R290 natural refrigerant technology

SKOPE BackBar BB.2.GSW 2 Glass Swing Door Fridge Black

ERS249

- Cabinet internal volume: 410L
- Shelves: Four adjustable height, plastic-coated wire shelves 4 x outer shelf (497W x 440L)
- Dimensions: 1480W x 590D x 1028H (with castors—adjustable from 1015 to 1030)

SKOPE BackBar BB.3.GSW 3 Glass Swing Door Fridge Black

ERS250

- Cabinet internal volume: 635L
- Shelves: Six adjustable height, plastic-coated wire shelves 4 x outer shelf (497W x 440L), 2 x inner shelf (555W x 440L)
- Dimensions: 2040W x 590D x 1028H (with castors—adjustable from 1015 to 1030)

SKOPE BackBar BB.4.GSW 4 Glass Swing Door Fridge Black

ERS251

- Cabinet internal volume: 410L
- Shelves: Eight adjustable height, plastic-coated wire shelves 4 x outer shelf (497W x 440L), 4 x inner shelf (555W x 440L)
- Dimensions: 2600W x 590D x 1028H (with castors—adjustable from 1015 to 1030)

SKOPE BackBar BB.2.GSL 2 Glass Sliding Door Fridge Black

ERS259

- Cabinet internal volume: 410L
- Shelves: Four adjustable height, plastic-coated wire shelves 4 x outer shelf (497W x 440L)
- Dimensions: 1480W x 600D x 1025H

SKOPE BackBar BB.3.GSL 3 Glass Sliding Door Fridge Black

ERS260

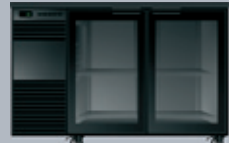
- Cabinet internal volume: 635L
- Shelves: Six adjustable height, plastic-coated wire shelves 4 x outer shelf (497W x 440L), 2 x inner shelf (555W x 440L)
- Dimensions: 2040W x 600D x 1025H

SKOPE BackBar BB.4.GSL 4 Glass Sliding Door Fridge Black

ERS261

- Cabinet internal volume: 860L
- Shelves: Eight adjustable height, plastic-coated wire shelves 4 x outer shelf (497W x 440L), 4 x inner shelf (555W x 440L)
- Dimensions: 2600W x 600D x 1025H

SKOPE®



ERS249



ERS250



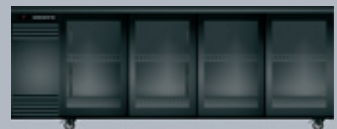
ERS251



ERS259



ERS260



ERS261

* White, black or stainless steel options available

* Swing or hinged door options available

* Dimensions exclude countertop fitting



ERS262

SKOPE FRIDGES

Code	Description
------	-------------

SKOPE Backbar CL.2.GSW CounterLine 2 Glass Swing Door Fridge Black

ERS262

- Cabinet internal volume: 345L
- Dimensions: 1580W x 680D x 830mmH
- Shelves: Four adjustable height, plastic-coated wire shelves, 4 x outer shelf (547W x 530L)

SKOPE Backbar CL.3.GSW CounterLine 3 Glass Swing Door Fridge Black

ERS263

- Cabinet internal volume: 533L
- Dimensions: 2190W x 680D x 830mmH
- Shelves: Six adjustable height, plastic-coated wire shelves, 2 x inner shelf (547W x 530L), 4 x outer shelf (605W x 530L)

SKOPE Backbar CL.4.GSW CounterLine 4 Glass Swing Door Fridge Black

ERS264

- Cabinet internal volume: 721L
- Dimensions: 2800W x 680D x 830mmH
- Shelves: Eight adjustable height, plastic-coated wire shelves, 4 x inner shelf (547W x 530L), 4 x outer shelf (605W x 530L)

SKOPE Backbar CL.2.GSL CounterLine 2 Glass Sliding Door Fridge Black

ERS265

- Cabinet internal volume: 345L
- Dimensions: 1580W x 690D x 830mmH
- Shelves: Four adjustable height, plastic-coated wire shelves, 4 x outer shelf (547W x 530L)

SKOPE Backbar CL.3.GSL CounterLine 3 Glass Sliding Door Fridge Black

ERS266

- Cabinet internal volume: 533L
- Dimensions: 2190W x 690D x 830mmH
- Shelves: Six adjustable height, plastic-coated wire shelves, 2 x inner shelf (547W x 530L), 4 x outer shelf (605W x 530L)

SKOPE Backbar CL.4.GSL CounterLine 4 Glass Sliding Door Fridge Black

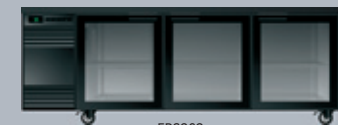
ERS267

- Cabinet internal volume: 721L
- Dimensions: 2800W x 680D x 830mmH
- Shelves: Eight adjustable height, plastic-coated wire shelves, 4 x inner shelf (547W x 530L), 4 x outer shelf (605W x 530L)

* White, black or stainless steel options available

* Swing or hinged door options available

* Dimensions exclude countertop fitting



ERS263



ERS264



ERS265



ERS266



ERS267

SKOPE FRIDGES

Code	Description
------	-------------

SKOPE Backbar SL.2.GSW Slimline 2 Glass Swing Door Fridge Black ERS268

- Cabinet internal volume: 290L
- Dimensions: 1580W x 590D x 830mmH
- Shelves: Four adjustable height, plastic-coated wire shelves, 4 x inner shelf (547W x 440L)



ERS268

SKOPE Backbar SL.3.GSW Slimline 3 Glass Swing Door Fridge Black ERS269

- Cabinet internal volume: 448L
- Dimensions: 2190W x 590D x 830mmH
- Shelves: Six adjustable height, plastic-coated wire shelves, 4 x outer shelf (547W x 440L), 2 x inner shelf (605W x 440L)



ERS269

SKOPE Backbar SL.4.GSW Slimline 4 Glass Swing Door Fridge Black ERS270

- Cabinet internal volume: 606L
- Dimensions: 2800W x 590D x 830mmH
- Shelves: Eight adjustable height, plastic-coated wire shelves, 4 x outer shelf (547W x 440L), 4 x inner shelf (605W x 440L)



ERS270

SKOPE Backbar SL.2.GSL Slimline 2 Glass Sliding Door Fridge Black ERS271

- Cabinet internal volume: 290L
- Dimensions: 1580W x 600D x 830mmH
- Shelves: Four adjustable height, plastic-coated wire shelves, 4 x inner shelf (547W x 440L)



ERS271

SKOPE Backbar SL.3.GSL Slimline 3 Glass Sliding Door Fridge Black ERS272

- Cabinet internal volume: 448L
- Dimensions: 2190W x 600D x 830mmH
- Shelves: Six adjustable height, plastic-coated wire shelves, 4 x outer shelf (547W x 440L), 2 x inner shelf (605W x 440L)



ERS272

SKOPE Backbar SL.4.GSL Slimline 4 Glass Sliding Door Fridge Black ERS273

- Cabinet internal volume: 606L
- Dimensions: 2800W x 600D x 830mmH
- Shelves: Eight adjustable height, plastic-coated wire shelves, 4 x outer shelf (547W x 440L), 4 x inner shelf (605W x 440L)



ERS273

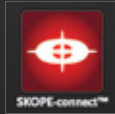
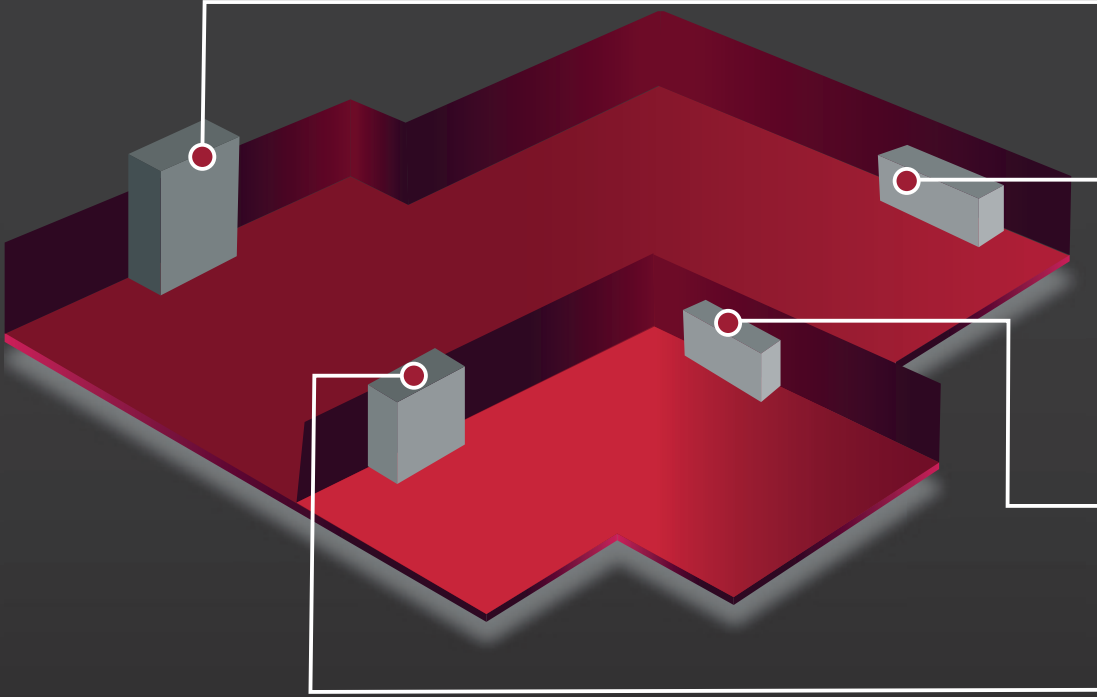
* White, black or stainless steel options available

* Swing or hinged door options available

* Dimensions exclude countertop fitting

End-to-end Refrigeration Solutions

Invest in premium quality refrigeration that is built to last



SKOPE Funding

Ask about SKOPE Funding and enjoy peace of mind with a tailored ownership plan



ActiveCore

Front-of-house Display
Refrigeration



BackBar

Underbench Bar Display
Refrigeration



ReFlex

Back-of-house
Storage Refrigeration



Irinox

Blast Chillers
& Shock Freezers

Finance Brand New Refrigeration from just \$3 per day*

*Daily repayment rates are indicative only. This repayment rate is based on a \$3,000 (incl GST) purchase financed over a 5 year term. Full terms and conditions apply and will be provided on application. Approval subject to credit criteria.



ERS20



ERS69



ERS25



ERS24



ERS252, ERS253

SKOPE PREP CHILLERS

Code	Description
------	-------------

SKOPE Pegasus Stainless Steel Prep Chillers

2 Door PG500prep

ERS20

- 1750W x 830D x 765mmH
- Flat cutout for 7 x 1/3 pans

2 Door PG500pizza

ERS69

- 1750W x 830D x 900mmH
- With an ingredient upstand for 9 x 1/3 pans 150mmD

3 Door PG800prep

ERS25

- 2435W x 830D x 765mmH
- With gastro cutout in top for 11 x 1/3 pans

3 Door PG800pizza

ERS24

- 2435W x 830D x 900mmH
- With an ingredient upstand for 11 x 1/3 pans

**Adjustable legs and castors supplied as standard or optional plinth.*

SKOPE-connectEYE is the small device with big implications for commercial refrigeration—regardless of brand. Place the EYE within your existing fridge, freezer, or cool room and start benefiting from your temperature data.

The EYE is a portable iteration of the controller found in many SKOPE fridges. Use the EYE in SKOPE BackBar, BackBar X, CounterLine, EziCore, Food Display, Open Deck, Pegasus, Serene, and VFX ranges to collect temperature data from inside the refrigeration cabinet with extreme accuracy, allowing you to:

- Simplify and support compliance management
- Avoid food waste with temperature alerts
- Track door openings on your refrigeration
- Size: 107 x 42 x 27mm, weight 70g, Operating Temperature -35°C to 40°C, Ingress protection IP67, Power source Lithium non replaceable, Battery life up to 5 years (fridge) up to 2 years (freezer), Data storage 2 months

ERS252

SKOPE-connectEYE

ERS253

SKOPE-connectEYE—6 pack

BLAST CHILLERS

Code	Description
------	-------------

An Irinox Blast Chiller will transform your business—save time, reduce wastage and watch your profits grow.

Blast chilling is a must-have technology in successful commercial kitchens, and Irinox is the brand that sets global standards. Irinox helps get the best out of your hospitality business. Essential for food-safety, Irinox also assists with better organisation and planning, reducing food waste, maximising food quality, extending shelf life and expanding the menu.

This Irinox Easy Fresh Entry-level compact reach in GN 1/1 blast chiller and shock freezer offers a powerful mix of usability and high yields suitable for most commercial kitchens. This Irinox blast chiller cools quickly to 3°C and deep freezes food at -18°C at the core, even hot ones just removed from the oven. The operating principle of a blast chiller is to extract the heat from the food in the shortest amount of time. EasyFresh Next guarantees ultra-rapid cooling and freezing and preserves the fragrance, consistency, colours and all food nutritional properties, fixing its quality and freshness longer over time.

Irinox Easy Fresh Next XS Blastchiller model EF Next XS

ERS274

- Dimensions: 535 W x 665 D x 740 H (mm)
- Tray Capacity GN1/1 (20mmD): 3

Irinox Easy Fresh Next S Blastchiller model EF Next S

ERS275

- Dimensions: 790 W x 840 D x 870 H (mm)
- Tray Capacity GN1/1 (20mmD): 8

Irinox Easy Fresh Next M Blastchiller model EF Next M

ERS276

- Dimensions: 790 W x 858 D x 1590 H (mm)
- Tray Capacity GN1/1 (20mmD): 18

Irinox Easy Fresh Next L Blastchiller model EF Next L

ERS277

- Dimensions: 790 W x 858 D x 1965 H (mm)
- Tray Capacity GN1/1 (20mmD): 27

SKOPE®



ERS274



ERS275



ERS276



ERS277



ERS278



ERS279



ERS280



ERS281

BLAST CHILLERS

Code	Description
------	-------------

This Iriinox MultiFresh Next Blast Chiller is one of the most powerful and economic blast chillers on the market. The Iriinox MultiFresh range consists of sizes ranging from the most compact to the largest version.

- The most compact blast chiller—The Next 'S' Small size brings a big impact on margins with either the essential or excellent configurations.
- The mid-sized variant—The Next 'M' Sets the standard with chilling, freezing, non-stop, and cold holding capabilities, which boasts a 50kg output, plus an enviable standard features list.
- The large variant—The Next 'L' Essential combines a substantial 70kg output with the flexibility of chilling, freezing, non-stop, and cold-holding capabilities
- The largest variant—The Next 'LL' blast chiller integrates power and efficiency on a wide footprint accommodating GN 2/1 pans. Provides the flexibility of the MultiFresh Next L Essential, alongside a massive 95kg output and the benefits of the Turbo package.
- Natural refrigerant gas

Iriinox Multi Fresh Next S Blastchiller model MF Next S ERS278

- Dimensions: 790 W x 840 D x 870 H (mm)
- Tray Capacity GN1/1 (20mmD): 8

Iriinox Multi Fresh Next M Blastchiller model MF Next M ERS279

- Dimensions: 790 W x 1015 D x 1590 H (mm)
- Tray Capacity GN1/1 (20mmD): 18

Iriinox Multi Fresh Next L Blastchiller model MF Next L ERS280

- Dimensions: 790 W x 1015 D x 1965 H (mm)
- Tray Capacity GN1/1 (20mmD): 27

Iriinox Multi Fresh Next LL Blastchiller model MF Next LL ERS281

- Dimensions: 870 W x 1145 D x 1965 H (mm)
- Tray Capacity GN1/1 (20mmD): 54
- Tray Capacity GN2/1 (20mmD): 27

Need hospitality equipment, **fast?**

How SilverChef can help you.

- Approval in under five minutes
- Flexible 12-month rental agreement
- Upgrade or buy the equipment at anytime



LEARN MORE



APPLY FOR FINANCE

Why wait? Don't dream, **Do.**

Contact SilverChef today.

PH: 0800 453 010 | silverchef.co.nz



Custom Built Chillers



We offer ... **infinite design possibilities**
and can **build to suit the specifications**
of any modern kitchen or food service operation.



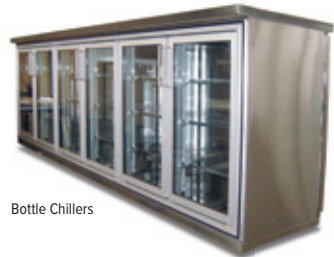
Pizza Chillers



Bottle Chillers



Salad Chillers



Bottle Chillers

Made to your requirements

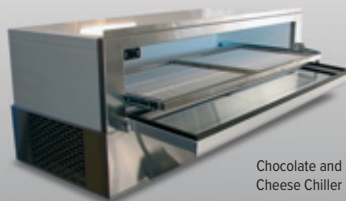
Any size and shape to fit all applications

Using innovative design techniques and traditional craftsmanship,

we convert our customer's dreams into reality.



Keg Chillers



Chocolate and Cheese Chiller



DELTA BOTTLE COOLERS WITH SLIDING DOORS



Talk to us about
custom made DELTA bottle coolers
 made in our Christchurch factory.



Shown with optional frosted glass.

Features:

- Plastic-coated wire shelves
- Stainless steel floor plan
- Black interior and exterior Finish. Other colours and finishes available on request
- Vertical mullion mounted lighting for superior light distribution
- Digital temperature controller

Options

- Custom sizes, lengths and heights
- Coloured or stainless steel finishes
- Stainless steel perforated shelves
- Hinged doors
- Door both sides
- Pass-through models
- Keg cabinets
- Under-mount integral refrigeration unit





MX15-5AEM



MX20ATS7



MX30ATS7



MX45ATS7



MX55ATS7



MX75ATS7



MX85ATS7

REACH-IN BLAST CHILLERS AND FREEZERS

Code	Description
------	-------------

Product Features

- Free standing units on legs
- 7" ergonomic touch screen with large keys for ease of use
- Functions—Soft Chill, Hard Chill, Soft Freeze, Hard Freeze, Self Adaptive Intelligent Chilling, Probe / Timer mode
- NEW functions—Ice cream hardening, ventilation drying, multiple timers with customisable phases, raw fish sanitation
- 40 program cycles with favourites key—shortcuts to last 9 programs used
- Pre-chilling cycle key to maximise efficiency
- Automatic hold mode after each cycle
- 3 point core temperature probe
- Automatic fan stop when door is opened
- Manual defrosting with automatic control of time

Note: load capacities may vary depending on the thermal conductivity of the food being chilled, the thickness of product and container used.

MX15-5AEM

3 Tray Reach-In Blast Chiller / Freezer (15kg)

MX20ATS7

4 Tray Reach-In Blast Chiller / Freezer (20kg)

MX30ATS7

9 Tray Reach-In Blast Chiller / Freezer (30kg)

MX45ATS7

9 Tray Reach-In Blast Chiller / Freezer (45kg)

MX55ATS7

15 Tray Reach-In Blast Chiller / Freezer (55kg)

MX75ATS7

15 Tray Reach-In Blast Chiller / Freezer (75kg)

MX85ATS7

21 Tray Reach-In Blast Chiller / Freezer (85kg)

ROLL-IN BLAST CHILLERS AND FREEZERS

Code	Description
------	-------------

Friginox have a large range of blast chillers and freezers to suit your requirements.

MX65CATS7-C

20 Tray Roll-In Blast Chiller (85kg)

UMX1STS7-C

Ultra compact Roll-In Blast Chiller (80kg)

MX2STS7-C

2 x 1/1 GN trolley (not included) Roll-in Blast Chiller (160kg)

MX3STS7-C

3 x 1/1 GN trolley (not included) Roll-in Blast Chiller / Freezer (240kg)

FRIGINOX® 



MX65CATS7-C



UMX1STS7-C



MX2STS7-C



MX3STS7-C

THE NEW FRIGINOX TS7 RANGE OF BLAST CHILLERS AND FREEZERS.



FRIGINOX® 

- Range from reach-in, roll-in and refrigeration systems from 20kg to 480kg capacities
- The new 7" intuitive capacitive glass touch screen offers increased simplicity and accuracy
- New functions: Ice cream hardening, ventilation drying, multiple timers with customisable phases, raw fish sanitisation
- Self Adaptive Intelligent Chilling with soft/hard chilling or freezing modes
- Energy efficient cycles with auto fan start/stop.

MOFFAT®

Southern Hospitality Limited

0800 503 335 | www.southernhospitality.co.nz



refrigeration shelving

please refer to storage section for shelving



Freephone 0800 503 335

www.southernhospitality.co.nz

COOLROOMS

Talk to us about your large cold storage requirements.

We can help with modular Coolrooms and Freezers as well as wine cellars and customised walk in chillers and freezers. Our team have years of experience designing and installing in all conditions and to suit all needs.



Right-hand swing hinge door



P250kg roll-in flooring



Polyurethane panel (PUR)



Key lock & internal safety release



Rounded corner cap



Durable & adjustable door hinges



TURN SPACE
INTO VALUE

MODULAR SHELVING SYSTEMS FOR COLD ROOMS



Long Life service



Easy to clean



Fast assembly



Approved and suitable for
direct food contact



Lightweight



Environmentally friendly all
the way from delivery to use

