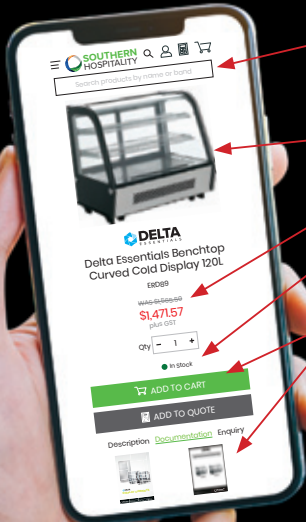
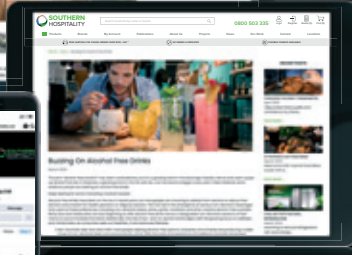
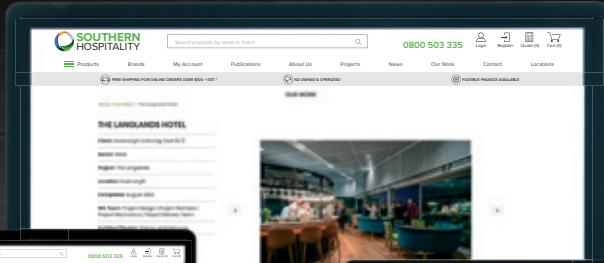


# ONLINE STORE

ORDER ANYTIME, ANYWHERE, ON ANY DEVICE



### Easy Search Function

Search for a product from a particular category.

### Quick Access to Product Details

Image  
Pricing  
Stock Information  
Detailed product information (such as dimensions, services, user manuals)

### Seamlessly order anytime, anywhere, on any device!

### To Activate Your Account

Please provide your sales rep with the correct email address/es to be used as your username. If you do not have these details, give us a call on **0800 503 335** or email us at **online@southernhospitality.co.nz**

Once your username has been processed, a welcome email will be sent to you and you can begin ordering online.

Sort your orders anytime, anywhere, on any device!



**FOLLOW US**  
& STAY CONNECTED!



## CROWD BARRIERS AND SAFES

Code	Description
------	-------------



### Crowd Barriers—queue control

- Mirror polish stainless steel pole and base
- 2 metre nylon tapes
- Twist—lock clip (child proof)
- Dimension: 920mmH x 320mm Dia

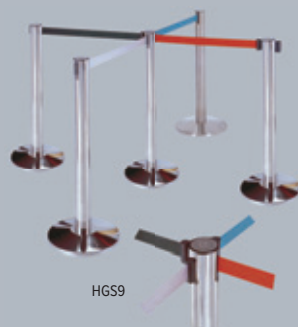
HGS8	Barrier 2 way head, black tape
HGS9	Barrier 4 way head, black tape

### Crowd Barrier with Velvet Cord

- Mirror polished stainless steel pole and base
- 1.5 metre velvet cord with stainless steel clips
- Dimensions: 950mmH x 320mm Dia

HGS7	Barrier with cord slots
HGS10	Barrier with sign holder
HGS1	Velvet cord—black
HGS2	Velvet cord—red

Other colours and sizes available. Please enquire.



HGS9



HGS7

HGS10

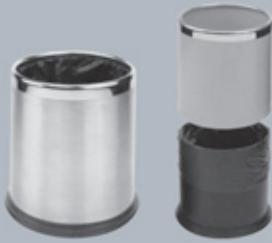


HGS1



HGS2





HGS5



HZ18



HGS3



HSE03



HSE01

## BINS AND ASHTRAYS

Code	Description
------	-------------



### Rubbish Bins

In room stainless steel waste paper bin.

- Features black bin with either brushed stainless steel or black over sleeve to hold liner in place
- Rubber base to stop slipping and protect tiled floors
- Dimensions 275mmH x 225mm Dia

HGS5 Stainless Steel

HGS6 Black



### Fireproof Waste Paper Bin

HZ18 10 litre size ideal for rooms, bedrooms, bathrooms or offices.

### Public Area Pedestal Ashtrays with rubbish bin underneath

- Stainless steel outer and galvanised bin liner
- Dimensions: 650mmH x 300mm Dia
- 2 styles

HGS3 Pedestal Ashtrays and bin brushed stainless finish

HSE03 Wall Mounted Ashtray, stainless steel

75 Dia x 460mmH

Easily mounted on wall or post

A key opens the base for easy emptying

HSE01 Windproof Ashtray, stainless steel, 120 Dia x 55mmH



## TROLLEYS AND VACUUM CLEANERS

Code	Description
------	-------------

**Luggage Racks**

HL3	Professional Luggage Rack, Chrome 600W x 560D x 680mmH 30kg load max
-----	--

**Trolleys**

HZ9	X Frame Trolley, 710W x 660D x 950mmH
HZ20	Spare bag for X frame cart



HT26	Grandmaid housekeeping cart with doors, black 1524 x 559 x 1270mmH
HT45	Vinyl bag for HT26, brown

**Hotel Luggage Cart with Clothes Rail General**

HGS11	<ul style="list-style-type: none"> <li>• Mirror finish stainless steel</li> <li>• Pneumatic tyres</li> <li>• Carpeted platform</li> <li>• Rubber bumper</li> <li>• Dimensions: 1050W x 610D x 1800mmH</li> </ul>
-------	--

**Vacuum Cleaners****15 Litre Wet and Dry Vacuum Cleaner**

HZ15	<ul style="list-style-type: none"> <li>• Compact</li> <li>• 15 litre heavy duty stainless steel tank holds liquid and dry materials</li> <li>• 55cm x 34.5cm</li> </ul>
------	---

**Henry Vacuum Cleaner**

EPQ1	Numatic 9L
EPQ3	Bags for EPQ1

**PacVac Back Pack Vacuum Cleaner**

EPQ2	Superpro700
EPQ5	Bags for EPQ2



HL3



HZ9



HT26



HGS11



HZ15



EPQ1



EPQ2



ACT19



ACS3



AHT9

## BEDROOM

Code	Description
------	-------------

### Bedspreads, Pillows, Valances

Made to measure. Enquire for pricing.

### Mattress and Pillow Protectors

ACT19	Mattress Protector, King Single
ACT13	Mattress Protector, Double

### Pillows

ACS3	Pillow 450g, Commercial Hospitality Standard
------	--

### White Commercial Sheets—Flat

Superior quality percale sheeting—beautifully made at unbelievable prices.

#### Single

AHT9	Percale 50/50, 40 x 40/110 x 90, 180 x 305cm
------	--

#### Double/Queen

AHT15	Percale 50/50, 40 x 40/110 x 90, 250 x 305cm
-------	--

### Pillow Slip

AHT4	Percale 50/50
------	---------------

## TOWELS AND TABLE LINEN

Code	Description
------	-------------

### Coloured Towels—Weavers

ARC1 Hand Towel 136g White 46 x 66cm

### Caress 100% Spun Polyester Tablecloths

Colours available: white, black, maroon, red, navy and bottle green, ivory, gold, royal blue, dusky rose. Other sizes available on request, POA.

AHT28 137 x 137cm White  
AHT30 137 x 137cm Black

AHT25 183 x 137cm White  
AHT27 183 x 137cm Black

AHT22 137 x 244cm White  
AHT24 137 x 244cm Black  
\*fits table 1800 x 750

AHT19 137 x 305cm White  
AHT21 137 x 305cm Black  
\*fits table 2400 x 750

AHT18 183 x 183cm White  
AHT17 183 x 183cm Black

### Round Tablecloths

AHT59 137cm Diameter Black

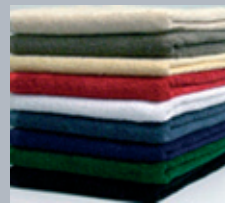
### Napkins and Cloth

100% Polyester. 50 x 50cm

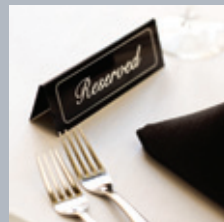
AAT12 White  
AAT11 Black

AAT15 White 53 x 53cm

AHT14 Commis Cloth Cotton White 50 x 50cm



Coloured towels—Weavers



AHT28



AAT12



AAT15



AHT14





AME1



HT39



ASF12

## BATHROOM

Code	Description
AME1	Shower Curtain White Satin Stripe, Weighted, 1200 x 1800mm
AME2	Bath Size Shower Curtain, White, 1800 x 1800mm

\*Larger sizes available. POA

HT39 Toilet Bowl Brush

### Sheffield Hair Dryer

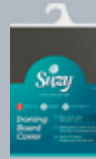
ASF12

- 2200 Watts
- 3 heat settings
- 2 speed settings
- Cool shot
- Hanging loop for easy storage



## LAUNDRY AND COAT HANGERS

Code	Description
ACA2	Suzy Ironing Board
ACA5	Ironing Board cover for ACA2 <ul style="list-style-type: none"> <li>• 1130 x 380mm</li> <li>• Elasticised draw string with toggle</li> </ul>
ACN4	Standard Hanger—Wooden





## KITCHEN

Code	Description
------	-------------

 ACCOLADE
**Accolade Dinner Set**

CA02

Set of 16, includes:

4 Metro Plates (CA107) 18cm

4 Metro Plates (CA110) 25cm

4 Cereal Bowls (CA212) 16cm

4 Vibe Tall Mugs (CA542) 360ml

(Items can be purchased separately for replacement)



CA02

**Brew Coffee Plungers**

HMP41 Infusion, Black, 350ml

HMP42 Infusion, Black, 600ml

HMP43 Infusion, Black, 1 Litre



HMP41

HMP42

HMP43



## KITCHEN

Code	Description
------	-------------

### Glass Teapots with stainless steel infuser

HDO1	470ml
HDO2	700ml

### Water Pitcher

HDO3	Stainless steel lid, 1.5 Litre black handle, glass
------	---

**PYREX**<sup>®</sup>

### Pyrex Kitchen Equipment

ASY4	Oblong Bakers Dish, 23 x 33cm
------	-------------------------------

ASY5	Oblong Bakers Dish, 25 x 38cm
------	-------------------------------

ASY1	3 Piece Mixing Bowl Set
------	-------------------------

ASY6	Jug, 4 Cup/1 Litre
------	--------------------



HDO1



HDO2



HDO3



ASY4



ASY5



ASY1



ASY6



AMP11



AMP12



AMP13



AMP14



AMP15



AMP16



AMP17



AP1



AMP25



AMP26



AMP4-AMP6

## KITCHEN

Code	Description
------	-------------



### Stainless Steel Utensils

AMP11	Turner Slotted
AMP12	Spoon Slotted
AMP13	Spoon Solid
AMP14	Ladle
AMP15	Masher
AMP16	Can Opener
AMP17	Whisk



AP1	Brabantia container 1.4L with window
-----	--------------------------------------



**Ai.de.chef**

AMP25	3 Way Grater, Stainless Steel
-------	-------------------------------

AMP26	Deluxe Can Opener
-------	-------------------



### Bormioli Rocco

AMP4	Mr Chef Bowl, 220mm
AMP5	Mr Chef Bowl, 260mm
AMP6	Mr Chef Bowl, 300mm

DOMESTIC APPLIANCES

Code	Description
------	-------------



Breville Kitchen Appliances

AB11 Sandwich Press, Stainless Steel, 2 Slice, 2000 Watt

AB21 4 Slice Sandwich Press, S/S, 2000 Watt

AB10 Rice Cooker

AB12 Professional 4 Slice Series 800 Toaster



AB11



AB21



AB10



AB12





AB13



EAA6



ASH22

## DOMESTIC APPLIANCES

Code	Description
------	-------------

### Breville®

#### Breville Kitchen Appliances

AB13 Hot Water Urn, 6 Litre

### Dualit®

#### Dualit Toasters

EAA6 4 Slice Toaster, Stainless Steel

### SHARP®

#### Sharp Microwaves

ASH22 Convection Microwave, 1100W, Stainless Steel  
Convection/Grill, Inverter Technology  
520W x 315D x 510mmH  
32 Litres



# Fisher & Paykel

Delivering products that are adaptable, functional and durable.  
Talk to Southern Hospitality about your Fisher & Paykel requirements.



## COOK

## COOL



## CLEAN



## WASH



## DRY

## BABY CARE

Code	Description
------	-------------



HT47	Highchair—tray sold separately
HT48	Highchair tray



HT47, HT48



HG63

HG63	Highchair with tray
------	---------------------

**Wall Mounted Change Tables**

- Easy-to-clean surface
- Safety belt adjustable with one hand
- No buckle to catch and break in door
- Built-in liner dispensers
- Bag hooks on both sides for added convenience

ASP2	Vertical, 863H x 48W x 14mmD (closed), 86mm (open)
------	--

ASP1	Horizontal, 457H x 863W x 100mm (closed), 432mm (open)
------	--

ASP4	Change Table Liners (carton of 500)
------	-------------------------------------



ASP2



ASP1



## DOMESTIC APPLIANCES

Code	Description
------	-------------

### 2 Slice Stainless Steel Toaster

ASF11

- 6 browning settings
- Self-centring extra wide bread slots
- Electronic timer control
- Defrost, reheat, cancel functions

### 1.7 Litre White Cordless Kettle

ASF8

- 360 degree rotating base
- Boil-dry protection
- Removable and washable filter
- Automatically turns off when water boils

### 2 Slice Stainless Steel Sandwich Press

ASF16

- Non-stick cooking surface
- Cool touch base and handles
- Tilting upper cooking plate
- 1500W

### 2200W Hair Dryer

ASF12

- 3 heat settings
- 2 speed settings
- Reduced noise
- Ergonomically designed

### 2000W Steam Iron

ASF14

- Non-stick soleplate
- Variable steam ironing
- Self cleaning
- 230ml large water tank

### Electric Knife

AS10

- Twin blade
- Stainless steel serrated blades
- Ergonomic
- 90W


**SHEFFIELD**


ASF11



ASF8



ASF16



ASF12



ASF14

*Sunbeam*



AS10



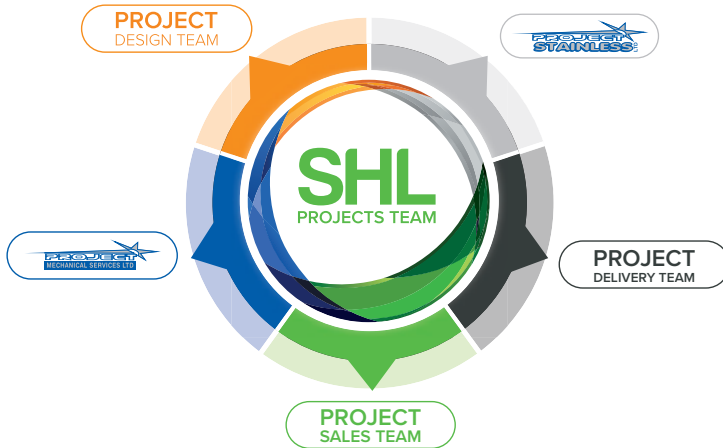
## WHY SUPPORT US?

We support local business. We have the largest range of stock, in stock.

Our teams are highly experienced and will deliver on time to budget.

We value our customers and go out of our way to ensure good outcomes.

We employ people in locations across the country and feel investing throughout New Zealand helps us to provide the best service whilst contributing to our local economy.



### PURPOSE

Shaping the future of hospitality together.

### VISION

To be a world class company.

**We have been supporting local manufacturing for over 30 years.**

**Some of the NZ manufactured brands we represent are:**



These are our key brands of cooking equipment and all of these brands are manufactured by Moffat right here in Christchurch. Moffat have permanently located their manufacturing facility here in NZ, this investment in local infrastructure and support provides a whole other level of value to our NZ market.



With a focus on manufacturing high quality stainless steel for commercial kitchens, the Project Stainless factories offer everything from work benches, sink benches to shelving. Everything they provide us is manufactured right here in either Christchurch, Wellington or Auckland. The factories employ local tradesmen in our three strategic locations.



Manufactured in New Zealand for 40 years, Starline Dishwashers are engineered specifically for New Zealand conditions. Although Washtech have a significant export market they continue to invest in its Auckland based manufacturing facility, employing New Zealanders and doing their part to keep local manufacturing alive and strong.

