

ESPRESSO COFFEE EQUIPMENT

Code	Description
------	-------------

Fiamma Marina CV Programmable Single Group Espresso Machine EF5

- Easy control of boiler temp
- Programmable dosage and cup warming
- Automatic cleaning programme
- Boiler capacity: 3L
- 375W x 530D x 485mmH

Fiamma Caravel II Tall Semi Auto 2 Group Espresso Machine EF21

- Easy control of boiler temperature
- Semi-automatic manual coffee dosage
- Work area allows 14cm high cups and trays for smaller cups
- 1 x water tap and 2 x steam wands
- Boiler capacity: 11 Litre
- 665W x 563D x 530mmH

Fiamma Quadrant 2 DSP Volumetric 2 Group Espresso Machine EF22

- Easy control of boiler temperature
- Programmable dosage
- One touch electronic controls
- 1 x water tap and 2 x steam wands
- Boiler capacity: 11 Litre
- 750W x 600D x 595mmH

Fiamma Quadrant 3 DSP Volumetric 3 Group Espresso Machine EF23

- Easy control of boiler temperature
- Programmable dosage
- One touch electronic controls
- 1 x water tap and 2 x steam wands
- Boiler capacity: 18 Litre
- 960W x 600D x 595mmH

fiamma 
SINCE 1977



EF5



EF21



EF22



EF23

COFFEE EQUIPMENT

Code	Description
------	-------------



Fiamma MCF50 Coffee Grinder

EF26

- Low Volume grinder ideal for decaf or small capacity requirements
- Production capacity: 1 kg per day
- Hopper Capacity: 0.25kg Doser Capacity: 0.18kg
- Dose Range: 7.0–10.5g
- 50mm diameter grindstones 1400rpm
- Power: 150w / 10 amp plug supplied
- Dimensions: 152mmW x 250mmD x 382mmH / 5.2kg



EF26



EF24

Fiamma MCF65A Automatic Coffee Grinder

EF24

- Micrometric regulation
- Reinforced portafilter holder
- Grindstone diameter: 65mm
- Speed: 1400rpm
- Hopper Capacity: 1.4kg
- Daily Production: up to 4kg
- Dimensions: 230W x 360D x 600mmH



Bravilor Double Hot Plate

EBV1

- Takes two coffee jugs
- Power: 240V, 50Hz, 140W
- 404W x 195D x 61mmH



EBV1



EBV3

Bravilor Novo 2 Filter Coffee Machine

EBV3

- Manual fill
- Makes 12 cups of coffee in less than 6 minutes—about 18L per hour
- 2 self regulating hot plates maintain an optimum coffee quality
- Power: 2130W, 1phase, 10 amp (3 pin plug)
- 214W x 391D x 424mmH



EBV4



HBV1

Bravilor Pourover TH Filter Coffee Machine

EBV4

- Holding capacity of recommended airpot—2.2L
- Throughput per hour—approx 19L
- Brewing time—approx 7 minutes per 2.2L
- Power 230V, 50/60Hz, 2310W
- 235W x 406D x 545mmH

HBV1

Airpot 2.2L (for EBV4)



Brew Coffee Plungers

- | | |
|-------|--------------------------|
| HMP41 | Infusion, Black, 350ml |
| HMP42 | Infusion, Black, 600ml |
| HMP43 | Infusion, Black, 1 Litre |



HMP41



HMP42



HMP43

COFFEE MACHINE ACCESSORIES

Code	Description
------	-------------

Coffee Dump Boxes

HTF1	Bench top
HTF2	Freestanding
HTF3	Freestanding with bag
HTF4	Replacement Wood

DCP19	Coffee tube waste bag "Barista" Black 925 x 330mm—25 per pack
-------	--

Tamp for Coffee

HPW1	
------	--

Coffee Tool

HET5	Black
------	-------

Extra Bristles

HET1	3 pack
------	--------

Nylon Brush

HAS1	For group head
------	----------------



HTF1

HTF2

HTF3



DCP19



HPW1



HET5



HAS1



For perfect coffee, Roma is the ultimate choice.

The classic Italian designed Roma coffee cups & saucers created with coffee in mind. Roma cups have thick walls for retaining temperature and are the perfect size for a great tasting coffee.



DEMITASSE

TULIP

CAPPUCCINO

LATTÉ

Available in Black, White, Brown, Red, Teal, Grey, Matte Blue and Matte Orange

For full details see our crockery section.

COFFEE MACHINE ACCESSORIES

Code	Description
Elegance Creamer	
HB23	0.35L
Princess Creamer	
HTK684	0.15L
Elegance Jugs	
HB24	0.6L
HB25	1.0L
HB26	1.5L
HB27	2.0L
Latte Pro™	
Milk Jugs	
HPP1	600ml
Thermometers	
HTA2	Espresso Thermometer
HL70	Frothing Thermometer
Mesh Top Dredger	
HK12	
Coffee Pourover Filter	
HBV4	250 pack
Espresso Clean	
HCK49	1kg



THE TASTE OF ESPRESSO.

Rancilio's range of traditional espresso machines and professional grinders redefines the human-machine interaction experience with brewing technologies and ergonomic solutions in a modern and elegant look.



Southern Hospitality Limited
0800 503 335 | www.southernhospitality.co.nz



HOT CHOCOLATE DISPENSER AND URNS

Code	Description
------	-------------

**Hot Water Urns**

- Double layer body with twist lock lid
- Water level indicator and non-drip plastic tap, water gauge
- Overheat protection and concealed heating element
- Temperature controller 30~110°C
- Brushed Stainless finish

ED134	Hot Water Urn 12L
ED135	Hot Water Urn 20L

**Coffee Urn**

- Double layer Body with twisted lock lid
- Water level indicator and non-drip plastic tap, water gauge and coffee filter
- Overheat protection and concealed heating element
- Maximum Temperature: 98°C
- Set Brew Temp to 88°C to preserve beverage quality
- Brushed Stainless finish

ED133	Coffee Urn 11L
-------	----------------

**Hot Water Urns**

- Twist-lock lid
- Non-drip tap
- The overtemp cut out switch with manual reset
- Thermostat control with indicator lights that signal when unit is heating and ready for use
- The sight glass enables water levels to be easily monitored at all times

EST64	W.URN10, 10L
EST65	W.URN20, 20L
EST66	W.URN30, 30L



ED134-ED135



ED133



EST64-EST66



EZ18



HL77



HL78



HL79



HLT1



HBV1



HLT3



HLT4



HL59



HBV3



HGT10



HGT12

WATER BOILERS AND COFFEE POTS

Code	Description
------	-------------

MODEL	CAPACITY			POWER		WATER PRESSURE		DIMENSIONS		
	Boiling Water Delivery	Boiling Water Capacity	Boiling Water Recovery	Rating	Supply Voltage	Min.	Max.	h	w	d*
EZ18	30 Cups	5 Litres	120 Cups/Hr	10 Amps	220-240	2 Bars	10 Bars	510	365	240
EZ19	45 Cups	7.5 Litres	120 Cups/Hr	10 Amps	220-240	2 Bars	10 Bars	510	365	240
EZ20	100 Cups	15 Litres	120 Cups/Hr	10 Amps	220-240	2 Bars	10 Bars	565	425	310
EZ21	150 Cups	25 Litres	120 Cups/Hr	10 Amps	220-240	2 Bars	10 Bars	630	490	340

*Depth includes tap

COFFEE POTS AND JUGS

Insulated Vacuum Servers

- Vacuum and insulation properties guarantee retention of heat/cold
- Double walled polished 18/10 stainless steel
- Stainless steel inner liner
- Dishwasher safe

HL77 Insulated Server, 2L

HL78 Lid red tab for insulated server HL77

HL79 Lid black tab for insulated server HL77

Airpots

HLT1 3L Pump Pot, vacuum insulated

HBV1 Bravilor Airpot with Pump Lever, 2.2L

Double Wall Insulated Serving Pots

- 18/10 stainless steel

HLT3 1L

HLT4 2L

Coffee Decanters

HL59 Polycarb/stainless steel, 2L

HBV3 Bravilor Glass decanter, 1.8L



Accolade Water Pitchers

HGT10 Curved stainless steel, 1.8L

HGT12 Round stainless steel, 1.8L

BEVERAGE DISPENSERS

Code	Description
------	-------------



10 Litre Milk Dispenser

HLT11

- With ice cylinder (hollow tube for crushed ice keeps milk cold)
- Mirror finish
- Tomlinson faucet
- 360D x 260W x 530mmH

8 Litre Juice Dispenser

HLT7

- With ice cylinder (hollow tube for crushed ice keeps juice cold)
- Mirror polished
- Tomlinson faucet
- 275W x 350D x 582mmH

7 Litre Cereal Dispenser

HLT10

- Mirror polished
- 240W x 330D x 640mmH



Beverage Dispenser 10L

HTC22

- Stainless steel
- Removable infuser and centre ice core



LIBBEY

7 Litre Farmhouse Juice Jar

GL244

Stand for 7 Litre Farmhouse Juice Jar

GL346

PROMEK

Promek Juice Dispenser

EPK1

- Mixes and dispenses all types of beverages
- Low speed stirring system to cater for all beverages
- Easy to clean with removable tanks
- Heavy duty stainless steel construction
- 2 x 12L tanks
- Dimensions: 385W x 380D x 620mmH

PROMEK

Promek Penguin Slushie Machine

EPK2

- 2 x 10L tanks
- Dimensions: 400W x 480D x 840mmH



HLT11



HLT7



HLT10



HTC22



GL244 on GL346



EPK1



EPK2



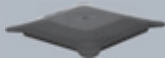
ELB22



ELB21



ELB26



ELB27



ELB28

BLENDETEC BLENDERS

Code	Description
------	-------------

Blendtec—World's most advanced blender

All Blendtec blenders are built to meet the unique needs of the commercial customer. Each feature delivers effortless operation and is designed to reduce overall cost.

- BPA-Free
- 1.9L four sided jar with vented lid for a better blending vortex—sold separately
- Blunt safety blade—10 x stronger than traditional blades
- Ultra high-speed motor

On Counter Stealth 885 Blender Set with 2 Jars

ELB22

- Fully enclosed, easy-to-clean blending station. Advanced sound enclosure helps blender operate at the sound level of normal conversation
- 42 preprogrammed cycles, customizable blend cycles with the Blend Wizard™ online tool
- Illuminated OLED display with tactile keypad
- Usage: Recommended daily blends: 200+
- Dimensions: 218W x 229D x 439mmH

Connoisseur 825 Blender Set with 2 Jars

ELB21

- 150 blends a day
- Sound enclosure
- Can be installed in counter
- 30 pre-programmed cycles
- Dimensions: 229W x 229D x 475mmH

ELB26 Fourside blender jar with latching lid—clear

ELB27 Hard lid (Fits Connoisseur)—black

ELB28 Latching lid—black





The **Choice** of **Restaurant** and **Hotel Chains Worldwide.**



otto™ the Juice Extractor
HJE960 Series



EXPEDITOR™ 1100S Culinary Blender
HBF1100S Series



Summit Edge® Blender
HBH855 Series



8L Stand Mixer
CPM800 Series



BigRig™ Immersion Blender
HMI016 Series



The Tango® Blender
HBH455 Series



Triple-Spindle Drink Mixer
HMD400 Series



AcuVide™ 1000 Immersion Circulator
HSV1000 Series

PrimaVac™ 254 In-Chamber Vacuum Sealer
HVC254 Series



Hamilton Beach
COMMERCIAL



ELH25



ELH21



ELH32



ELH10



ELH12



ELH20



ELH16

HIGH PERFORMANCE BLENDERS

Code	Description
------	-------------

HBH550-CE The Fury Blender

- ELH25
- 1.8 litre polycarbonate container
 - Wave action technology
 - 2 speed with pulse and jar pad sensor

Spare Jar for HBH550-CE The Fury Blender

ELH28

HBH855 Summit High Performance Blender

- ELH21
- PowerBlend Technology with 3.5 peak HP motor
 - Quiet Shield™ sound enclosure
 - Capacitive touchpad
 - Built-in sensors to extend clutch life
 - 1.4 L BPA-free co-polyester container
 - Easily accessible USB port

HBH755-CE Eclipse Blender 2L

- ELH32
- The WaveAction System has container and blade design for a super-creamy profile every time
 - Quiet Shield makes the Eclipse one of the quietest blenders in the world
 - Tested for moisture resistance
 - Assign cycles to 5 buttons for popular drinks from over 100 pre-programmed cycles
 - Stackable 64 oz. / 2 L Polycarbonate Container

Polycarb 2L Jug for HBH755 Blender

ELH27

HBB908R-CE Bar Blender

- ELH10
- 1.3L Break resistant Polycarbonate Jar
 - Lid open sensor for safety
 - Wave-Action system for smooth results
 - Durable toggle switch and Sure Grip feet
 - 746 (1HP) watt motor

HBB255S-CE Bar Blender

- ELH12
- 0.95L, Wide square Stainless Steel Jar
 - Lid open and Jar pad sensor for safety
 - Wave-Action system for smooth results
 - Protective control brow, sealed switches and Sure Grip feet
 - 1194 (1.6HP) watt motor

HMD1000 MixStation

- ELH20
- Create smooth shakes and frozen treats
 - 3/4 HP motor
 - Two modes of operation, program and variable speed
 - Capacitive-touch controls

Stainless 0.95L Jug for HBB255S-CE Blender

ELH16

BLENDERS AND MILKSHAKE MIXERS

Code	Description
------	-------------



Leader Bar Blender

ETS1

- 3 hp motor
- 2L heavy duty polycarbonate jar
- 220W x 200D x 520mmH
- On/Off switch, pulse function
- With wave action system

ETS6 Blender container Set 2L

Leader 800A Bar Blender

ETS2

- Multi purpose 1.5L BPA free polycarbonate blender jug for mixing, chopping and pureeing
- Automatic preprogrammed cycles
- 3 HP, 38,000rpm
- Wet and Dry application
- Overload reset and thermo switch protection
- Dimensions: 200mmW x 240mmD x 420mmH
- For Soundcover order code: ETS3 / Spare Jug ETS7

ETS3 Omnishield for 800A Blender

ETS6 2L BPA free Blender Jar

ETS7 1.5L BPA free Blender Jar



Hamilton Beach HMD200 Single Milkshake Mixer

ELH1

- Includes stainless steel cup
- Heavy-duty die cast construction
- 3 speeds for maximum mixing control

Hamilton Beach HMD400 3 Head Milkshake Mixer

ELH2

- Ideal for high volume milkshake preparation
- Includes 3 stainless steel cups
- Mixes up to twice as fast with more powerful 1/3 hp per motor
- 3 separate motors for better durability and results



Single Milkshake Mixer

ESM17

- 2 speeds: 10,000 / 15,000rpm
- Commercial ball bearing motor
- Heavy base for stability
- Stainless steel blending axis and jug
- 208W x 158D x 500mmH



Hayman Milkshake Mixers

- Each motor has its own two speed control switch
- Automatic stop-start as cups are loaded and removed

EHM10 Single Head Mixer

• Dimensions: 155W x 180D x 512H

EHM2 Double Head Mixer

• Dimensions: 275W x 180D x 512mmH



ETS1



ETS2



ETS3



ETS6



ETS7



ELH1



ELH2



ESM17



EHM10



EHM2



ERC19



ERC18



ELH19



ESM4

JUICERS

Code	Description
------	-------------

Robot Coupe Juicer J80

ERC19

- Speed: 3000rpm
- Induction motor
- Throughput up to 120kg/hr
- 2.5 mm grating disc and filter basket
- Bowl with anti-drip spout
- 6.5 litre waste container
- Voltage: single phase, 240V / 550W
- Dimensions: 235W x 535L x 505mmH
- Continuous pulp ejection
- Comes with translucent pulp container, drip tray

Robot Coupe Juicer J100

ERC18

- Speed: 3000rpm
- Induction motor
- Throughput—up to 160kg/hour
- Bowl with anti-drip spout
- Voltage: single phase, 240V / 1000W
- Dimensions: 235W x 538D x 596mmH
- Continuous pulp ejection
- Comes with ejection chute
- 7.2L translucent pulp container, drip tray

Hamilton Beach HCJ967 Citrus Juicer

ELH19

- 1800 rpm
- Powerful but exceptionally quiet motor
- Heavy-duty metal housing
- 3 reinforced reamers

Electric Citrus Juicer

ESM4

- Stainless steel body
- Rotate speed: 980rpm
- Easy to detach all parts and components for cleaning and maintaining
- Easy to function with only one power switch
- Dimensions: 280mmW x 200mmD x 470mmH

WATER DISPENSERS

Code	Description
------	-------------

Brita 104 Counter Top Mini Bottler

EBV500

- BRITA professional filtration—including Purity C 1000 AC
- High performance ice bank technology
- Cooling Capacity: 80L/Hour
- Max dispensing capacity: 2L/minute
- Dimensions: 370W x 540D x 496mmH
- Dispensing font height: 54mm

Vivreau Undercounter Chilled Still and Sparkling Dispenser

EBV201 Raw Copper Tap

EBV202 Matt White Tap

- 80 litre per hour dispensing capacity
- Stainless steel drip tray with plumb to waste option
- Remote CO₂
- Installation ready kit*
- 360W x 360D x 440mmH



VIVREAU®



EBV500



EBV201



EBV202

AROMACUP DISPENSERS

AromaCup Dispensers

HAD1 3 ingredient dispensers • 490W x 150D x 360mmH

HAD2 2 ingredient dispensers + 1 teabag dispenser
350W x 150D x 535mmH

HAD3 1 cup dispenser + 4 ingredient dispensers
+ 1 teabag dispenser
665W x 150D x 535mmH



HAD1



HAD2



HAD3