



SOUTHERN HOSPITALITY

AUGUST 2021—SEPTEMBER 2021



moving forward together

From skill shortages to lack of tourists to rising food costs, the hospitality industry continues to face the challenges of the 'new normal' in a post-COVID world. With these changes, we see the hospitality industry embrace an agile culture, turning obstacles into opportunities allowing them to flourish.

Check out these 10 key trends

your business can adapt to become more agile and come back strong for the rest of the year

1

off premise dining is here to stay

Keep food fresh at exact temperatures



The new standard is here!

Power up with environmental performance

Exp gives outstanding performance so that your food will always be fresh and tasty ...all day, every day!

ScanBox

Bringing your food with care



Better for the environment



Faster temperature reach



Improved temperature distribution



Adjustable moisture control



Exp Food Carts

Ergo Line H12 F / ESB18 / \$8,062.65 ~~\$7,417.64~~

Ergo Line Combo A4+H6 S / ESB23 / \$7,429.00 ~~\$6,834.68~~

Banquet Line Combo H6+6 / ESB24 / \$12,454.50 ~~\$11,458.14~~

Banquet Undercounter Exp Food Carts

H5 F / ESB16 / \$7,866.00 ~~\$7,236.72~~

H5 / ESB15 / \$6,004.38 ~~\$5,524.03~~

SilverChef.

*For Rent-Try-Buy a refundable security bond equal to 6 weeks rent is required up front, as well as your first weeks rent in advance. Daily rental price is GST inclusive.

All prices exclude GST & freight. Only while stocks last.

Sort your orders anytime, anywhere, on any device!

southernhospitality.co.nz

2

additional revenue streams through curbside and meal delivery

Handle high-volume production with speed and consistency.



Full Kitchen Equipment Solutions

Is your kitchen set up to thrive with the demands of your business?

Whatever the size of your kitchen, small or big, we have the full range to suit your needs.



COMBI STEAMERS

SEE ME IN ACTION!

Get in touch with your account manager to book a demo

CONVOTHERM

The Convotherm 4 range combines world class technology with user friendly, ergonomic and hygienic design. With easyTouch and easyDial, 7 capacity options and 28 models to choose from, you will have the degree of control you need.



COMBI KETTLES

Book a FREE DEMO!

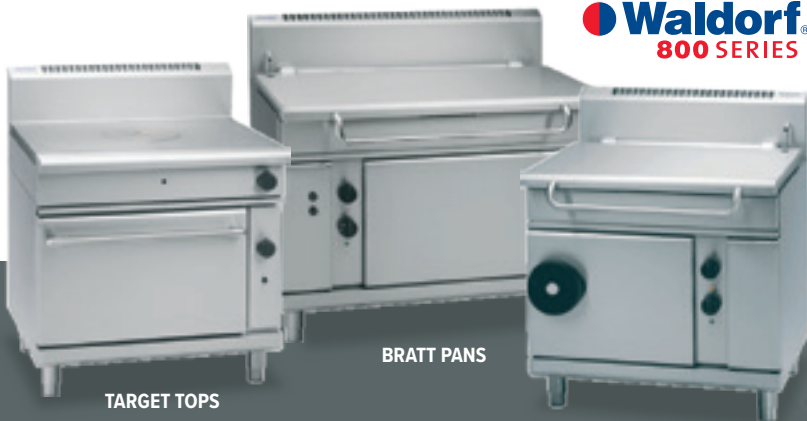
Organise a date with your account manager

metos

Ranging from 40–400 litre capacities. With direct steam or electrically heated version kettles, Metos kettles can be configured either as a stand-alone kettle or be installed as a group.

Cleaner lines and consistency in modular design across the entire range enable units to fit together to create an almost seamless kitchen workspace. The industry preferred 800mm depth ensures the efficient use of space, while easily accommodating the advanced performance features that define the Waldorf range.

Waldorf 800 SERIES



TARGET TOPS

BRAIT PANS

Our team of sales consultants provide advice to help you select the right equipment using knowledge that only comes from many years of extensive industry experience.

TALK TO US TODAY!



3

streamlined menus

The kitchen and the menu need to work in concert to enable production requirements without compromising quality.



NEW!

Low Daily Rent **\$10.70**

Pacotizing enables chefs to 'micro-purée' fresh, deep-frozen foods into ultra-light mousses, naturally fresh ice creams and sorbets or aromatic soups, sauces or fillings without thawing. Intensive flavours, natural colours and vital nutrients are captured in individual, ready-to-serve portions.

Low Daily Rent **\$19.17**

Pacojet 2 PLUS / EPJ19 / \$9,995.00- \$9,195.40
Pacojet Junior (Orange) / EPJ18 / \$5,579.25- \$5,132.91
12 Pack Pacotizing Beakers & Lids (Can only be used with the chrome steel protective outer beaker holder) / EPJ22 / \$500.00- \$460.00

Pacotizing Beaker Starter Kit (10 Beakers with Lids + 1 Chrome Steel Protective Beaker) / EPJ21 / \$995.00- \$915.40
4 Pack Pacotizing Beakers & Lids / EPJ3 / \$330.00- \$303.60

PACO JET

One system. Multiple applications.

What can I do with my Pacojet? From sauces, soups, sorbets to marinades, Pacojet can be used in multiple applications



Scan the QR code to find out more!



Waterproof Kitchen Scales 15kg x 2g / EEH1 / \$435.00- \$413.25
Kitchen Scales 6kg x 1g / EEH2 / \$245.00- \$204.25



Salter Benchtop Disc Electronic Scales
 EKC3
 5kg x 1g
~~\$62.40~~ **\$59.28**



Matter Stainless Steel Mandoline with Blades
 HM19
 370mm
~~\$379.37~~ **\$318.67**



Low Daily Rent **\$6.21**

Low Daily Rent **\$9.74**

robot coupe®

CL50 Ultra Vege Prep Machine
 ERC88
 Processing up to 500kg/hr
~~\$3,235.00~~ **\$2,976.20**

CL52 Vege Prep Machine
 ERC87
 Processing up to 750kg/hr
~~\$5,075.00~~ **\$4,669.00**

Buy a CL50U or CL52 Vege Prep machine and get a

FREE STARTER KIT!

Disc holder
 2mm and 4mm Slicers

RRP Value \$721

SilverChef.

*For Rent-Try-Buy a refundable security bond equal to 6 weeks rent is required up front, as well as your first weeks rent in advance. Daily rental price is GST inclusive.

All prices exclude GST & freight. Only while stocks last.

4

stay connected with customers in real time

Diners are always on the look out for new offers.
Take photos of your menu for the week and post it on social.

EST. 1931
Temuka
Pottery New Zealand

Temuka Pottery is a reliable, hardworking New Zealand icon with a new look, weight and feel which reflects a unique hand-crafted design, inspired by the organic spirit of the Artisan and produced in contemporary textures and glazes.

Potter's Mark
• Carton Qty: 6
Leather 21cm Plate / CT103 / ~~\$25.40~~ **\$23.37ea**
Leather 21cm Pasta Bowl / CT106 / ~~\$32.96~~ **\$30.32ea**
Layered Grey 21cm Pasta Bowl / CT116 / ~~\$32.96~~ **\$30.32ea**

Instagram worthy

Classic Coupe 21cm Pasta Bowl
• Carton Qty: 6
Rad Blue / CT126 / ~~\$33.80~~ **\$31.10ea**
Black Foam / CT135 / ~~\$33.80~~ **\$31.10ea**

Statement Pieces

Freedom Plates / Platters
• Carton Qty: 6
15cm Riverbank / CT143 / ~~\$22.29~~ **\$20.51ea**
29 x 16cm Riverbank / CT146 / ~~\$31.91~~ **\$29.36ea**
15cm Honey / CT153 / ~~\$23.77~~ **\$21.87ea**
29 x 16cm Honey / CT156 / ~~\$31.91~~ **\$29.36ea**

* NOTE: Colour may vary from the images because of the unique variations in the reactive glaze

tk
tablekraft
URBAN

Vitrified Commercial Grade Porcelain in Modern, Textured Colours

265mm Round Coupe Plates
• Carton Qty: 4
Green / CK006 / ~~\$25.25~~ **\$22.47ea**
Sand / CK010 / ~~\$25.67~~ **\$22.85ea**
Dark Grey / CK014 / ~~\$22.52~~ **\$20.04ea**

210 x 45mmH Round Flared Bowls
• Carton Qty: 6
Green / CK008 / ~~\$18.98~~ **\$16.89ea**
Sand / CK012 / ~~\$19.39~~ **\$17.26ea**
Dark Grey / CK016 / ~~\$19.16~~ **\$17.05ea**

ACCOLADE

Nordic White Plates with Black Rim
• Carton Qty: 6
21cm / CA002 / ~~\$13.31~~ **\$11.85ea**
23cm / CA003 / ~~\$14.69~~ **\$13.07ea**
27cm / CA004 / ~~\$22.02~~ **\$19.60ea**

Universal Round Plates
• Carton Qty: 6
20cm / CA010 / ~~\$9.98~~ **\$8.88ea**
2.5.5cm / CA012 / ~~\$13.66~~ **\$12.16ea**
28cm / CA013 / ~~\$16.47~~ **\$14.66ea**

BARALEE

*Vibrant textured glaze surface to elevate your food presentation
Commercial porcelain made in Thailand
Fine edge but chip-resistant*

25.5cm Sand Deep Round Coupe Plates
• Carton Qty: 4
Ruby Red / CM054 / ~~\$21.37~~ **\$19.02ea**
Jet Black / CM044 / ~~\$21.37~~ **\$19.02ea**
Moonstone / CM064 / ~~\$21.37~~ **\$19.02ea**

21cm Sand Shallow Bowls
• Carton Qty: 6
Ruby Red / CM058 / ~~\$15.76~~ **\$14.03ea**
Jet Black / CM048 / ~~\$15.76~~ **\$14.03ea**
Moonstone / CM068 / ~~\$15.76~~ **\$14.03ea**

15cm Sand Deep Bowl
• Carton Qty: 6
Moonstone / CM066 / ~~\$11.44~~ **\$10.18ea**

17cm Shallow Bowl
• Carton Qty: 6
Arctic White / CM077 / ~~\$8.21~~ **\$7.31ea**

300ml Sand Mug
• Carton Qty: 6
Ruby Red / CM059 / ~~\$8.22~~ **\$7.32ea**

All prices exclude GST & freight. Only while stocks last.

5

the growth of 'better-for-me' drinks

The pandemic has accelerated the demand for healthier, non-alcoholic beverages and premium drinking experiences.

the rise of the 'low'

a.k.a low-carb, low-sugar and low-alcohol drinks. Think seltzers, light wines and 0% beers.

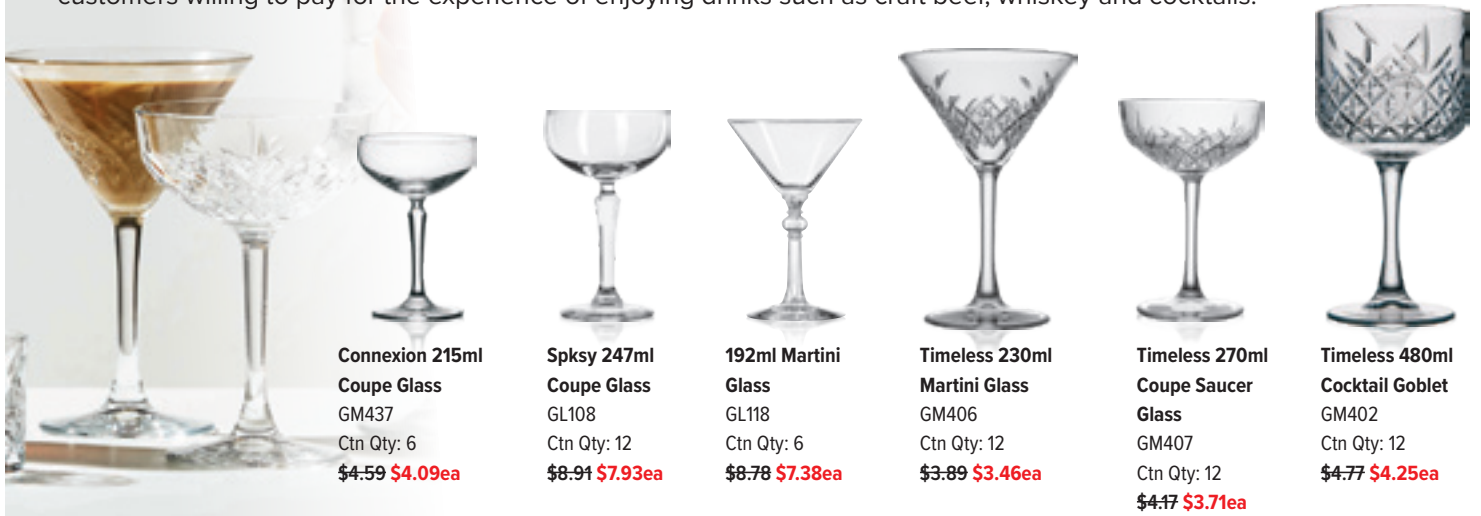


Perception 325ml Wine Glass with 150ml Pourline GL138 Ctn Qty: 12 \$3.68 \$3.09ea	Perception 170ml Flute Glass GL49 Ctn Qty: 12 \$3.99 \$3.35ea	V Line 162ml Flute Glass GP16 Ctn Qty: 12 \$4.75 \$4.23ea	Timeless 330ml Wine Glass GM432 Ctn Qty: 12 \$5.53 \$4.92ea	Princesa 230ml Wine Glass with 150ml Pourline GAR248 Ctn Qty: 12 \$5.47 \$4.59ea	Bliss 470ml Wine Glass GM24 Ctn Qty: 12 \$7.11 \$6.33ea	Reception 350ml Wine Glass with 150ml Pourline GAR33 Ctn Qty: 24 \$5.20 \$4.37ea	Restaurant 440ml Wine Glass GM80 Ctn Qty: 12 \$6.38 \$5.68ea
---	---	---	---	--	---	--	--



going premium with cocktails

customers willing to pay for the experience of enjoying drinks such as craft beer, whiskey and cocktails.



Connexion 215ml Coupe Glass GM437 Ctn Qty: 6 \$4.59 \$4.09ea	Spksy 247ml Coupe Glass GL108 Ctn Qty: 12 \$8.91 \$7.93ea	192ml Martini Glass GL118 Ctn Qty: 6 \$8.78 \$7.38ea	Timeless 230ml Martini Glass GM406 Ctn Qty: 12 \$3.89 \$3.46ea	Timeless 270ml Coupe Saucer Glass GM407 Ctn Qty: 12 \$4.17 \$3.71ea	Timeless 480ml Cocktail Goblet GM402 Ctn Qty: 12 \$4.77 \$4.25ea
--	---	--	--	---	--

drinks with benefits

use of functional ingredients like kombucha and turmeric for both boozy and non-alcoholic drinks.



Gibraltar 355ml Cooler Glass GL4 Ctn Qty: 12 \$2.51 \$2.11ea	Inverness 266ml Rocks Glass GL16 Ctn Qty: 12 \$2.51 \$2.11ea	Endeavor 265ml Rocks Glass GL22 Ctn Qty: 12 \$2.51 \$2.11ea	Islande 330ml Hi Ball Glass GAR30 Ctn Qty: 12 \$1.87 \$1.57ea	V Series 350ml Hi Ball Glass GB50 Ctn Qty: 12 \$3.66 \$3.26ea	Excalibur 300ml Double Old Fashioned Glass GB13 Ctn Qty: 12 \$2.89 \$2.43ea	Timeless 355ml Double Old Fashioned Glass GM370 Ctn Qty: 12 \$3.61 \$3.21ea
--	--	---	---	---	---	---



All prices exclude GST & freight. Only while stocks last.

6

outdoor dining is the new private dining

Reimagine rooftop dining or space, update outdoor furniture and fixtures, let diners enjoy the outdoor experience in different seasons.

Angled Bracket
Provides flexibility of heat direction.

Adjustable Heat Controls
Offers ease of operation and precise heat comfort levels.

Modular Construction
For simple storage.

Portable
For ease of movement.



Outdoor heating designed for performance in all conditions

Platinum 2300W Electric Heater EB12

- Ultra thin and stylish
- Weather and wind resistant
- Smart Control system
- 960W x 40D x 162mmH

\$1,260.00

Low Daily Rent \$2.63

Tungsten Smart-Heat Portable Gas Heater EB4

- Trendy design
- Heat output: up to 20m²
- Adjustable heat output
- Tilting head
- 487W x 701D x 2164mmH

\$1,750.00

Low Daily Rent \$3.65

Tungsten 2000W Electric Heater EB1

- Single element
- Bracket length: 164mm
- 1117W x 214D x 86mmH

\$824.50




Siesta
exclusive

Vita Stacking Chairs
Moulded polypropylene with aluminium legs
White / FIP10 Orange / FIP8 Black / FIP6 Green / FIP7 Red / FIP9
~~\$79.92~~ **\$71.93ea**




Siesta
exclusive


Maya Stacking Chairs
• Moulded polypropylene
Black / FIP4 Green / FIP35
~~\$98.85~~ **\$84.02ea**



Maya Black Stacking Barstool
FIP36
750mmH
~~\$456.69~~ **\$133.19**



Dionisio Black Stacking Armchair
FIP11
~~\$409.71~~ **\$93.25**



Air Black Stacking Chair
FIP1
~~\$143.26~~ **\$121.77**



White Melamine

- Melamine 16.5cm Ramen Spoon / HMJ33 / ~~\$1.70~~ **\$1.48ea**
- Melamine 15cm Bowl / HMJ29 / ~~\$7.44~~ **\$6.47ea**
- Melamine 11.5cm Bowl / HMJ28 / ~~\$4.11~~ **\$3.58ea**
- Melamine 23cm Plate / HMJ42 / ~~\$7.19~~ **\$6.26ea**
- Melamine 15cm Plate / HMG10 / ~~\$2.76~~ **\$2.40ea**
- Melamine 7cm Sauce Dish / HMJ34 / ~~\$1.57~~ **\$1.37ea**
- Melamine 13cm Chinese Spoon / HMJ32 / ~~\$1.44~~ **\$1.25ea**



Melamine 31 x 20cm
Rectangular Tray
HMG17
~~\$5.94~~ **\$5.17ea**

Consider melamine for outdoor dining, durable and lightweight



White Melamine Dippers

- Melamine 6cm Round / HMG6 / ~~\$1.40~~ **\$1.22ea**
- Melamine 9cm Round / HMG2 / ~~\$1.03~~ **\$0.90ea**
- Melamine 9cm Round Tapered / HMG34 / ~~\$4.96~~ **\$4.32ea**
- Melamine 6cm Square / HMG5 / ~~\$1.40~~ **\$1.22ea**



White Melamine Plates

- Melamine 17cm Plate / HMG13 / ~~\$2.27~~ **\$1.97ea**
- Melamine 23cm Plate / HMG15 / ~~\$5.11~~ **\$4.45ea**



Black Swirl Melamine

- Melamine 10cm Shallow Round Bowl / HMJ16 / ~~\$3.20~~ **\$2.78ea**
- Melamine 17cm Rice/Soup/Noodle Bowl / HMJ26 / ~~\$7.83~~ **\$6.81ea**
- Melamine 11.5cm Rice/Soup/Noodle Bowl / HMJ25 / ~~\$3.39~~ **\$2.95ea**
- Melamine 40cm Round Plate / HMJ23 / ~~\$38.52~~ **\$33.51ea**



White Square Melamine Bowls

- Melamine 18cm / HMG39 / ~~\$16.54~~ **\$14.39ea**
- Melamine 24cm / HMG40 / ~~\$25.73~~ **\$22.39ea**



Offer fresh ground pepper or salt with an upscale presentation

Salt & Pepper Mills

- 200mm Matte Black Pepper Mill with S/S Base / HH10 / ~~\$32.47~~ **\$14.61ea**
- 115mm Piano Red Ceramic Pepper Mill / HH13 / ~~\$15.90~~ **\$11.13ea**
- 300mm Piano Red Pepper Mill / HH14 / ~~\$40.59~~ **\$24.76ea**
- 140mm Stainless Steel Pepper Mill / HH2 / ~~\$33.92~~ **\$19.67ea**
- 90mm Salt Shaker & Pepper Mill Set / HH1 / ~~\$17.63~~ **\$14.99ea**

Securit
EST. 1948



Teak Wood Tag Holder (Set of 6)
HSR10
~~\$21.95~~ **\$16.90 set**



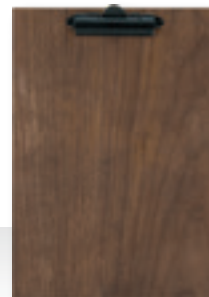
Acrylic Tag Holder (Set of 6)
HSR8
~~\$18.97~~ **\$15.93 set**



Wooden Table Chalkboard
HSR3
15 x 21cm
~~\$29.27~~ **\$19.90**



Clear A5 Poster Holder
HSR26
~~\$12.59~~ **\$7.93**



Wooden Menu Clipboard
HSR36
Stainless steel clip
~~\$42.44~~ **\$28.86**



XXL Square Chalkboards (Set of 6)
HSR33
40 x 40 x 0.2cm
~~\$47.89~~ **\$23.95**

All prices exclude GST & freight. Only while stocks last.

7

safety and sanitation

Customers have continued to develop handwashing and sanitising habits and expect an expanded 'food safety' effort in the way their food is prepared.



2 Ply Jumbo Toilet Rolls
DC404
300 metres per roll
8 rolls per polybag
~~\$39.50~~ **\$30.81 polybag**



3 Ply Toilet Rolls
DC108
225 sheets per roll
48 rolls per polybag
~~\$41.87~~ **\$35.17 polybag**



Blue 2 Ply Centrefed Paper Towels
DC505
180 metres per roll
6 rolls per polybag
~~\$88.88~~ **\$73.77 polybag**



1 Ply Slimfold Paper Towels
DC101
200 sheets per pack
20 packs per carton
~~\$52.75~~ **\$48.53 carton**

BioPak

It doesn't cost the earth

BioPlastic 80 Litre Green Rubbish Bin Liners

DBI51
20 rolls per pack
Shelf life of up to 6 months
Biodegradable in compost
1050 x 820mm
~~\$21.65~~ **\$16.89 pack**



ECOWISE

The Smarter Side of Green Cleaning

Handcare range

Dispensers
FREE ON LOAN*



1 Litre Hand Sanitiser Pouch
HCK455
Kills 99.9% of all known microbes.
~~\$45.50~~ **\$43.23**

1 Litre Antibacterial Soap Pouch
HCK456
Cleans hands thoroughly without drying them out.
~~\$33.85~~ **\$32.16**

1 Litre Foaming Soap Pouch
HCK457
For high use, high hygiene environments.
~~\$26.60~~ **\$25.27**

* Free on loan agreement to be completed with your local sales representative.



ECOWISE

The Smarter Side of Green Cleaning



Commercial Auto Dishwash
Concentrated cutlery, crockery and glassware detergent.
• Low foaming
• Non-caustic for safer handling

5 L / HCK437 / ~~\$37.80~~ **\$35.91**
20 L / HCK438 / ~~\$120.25~~ **\$114.24**

Commercial Rinse Aid
Concentrated rinse additive.
• Quick drying for speed of service
• Highly concentrated
• Eliminates residue

5 L / HCK439 / ~~\$32.57~~ **\$30.94**
20 L / HCK440 / ~~\$111.80~~ **\$106.21**

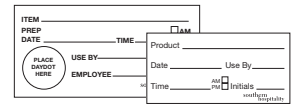
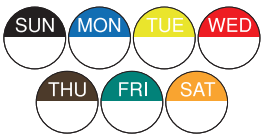
Griddle Clean
Hot plate, griddle, food press and cooking iron cleaner.
• Non-rinse formulation
• Quick cleaning in-use
• Non-caustic for safer handling

5 L / HCK447 / ~~\$67.46~~ **\$64.09**
1 L / HCK448 / ~~\$26.13~~ **\$24.82**
1 L Application Bottle with Flip Cap
HCK449 / ~~\$4.45~~ **\$4.45**

Grease Buster
Concentrated drain and grease trap treatment.
• Non-corrosive
• Breaks down fats
• Active bacterial agents

5 L / HCK446 / ~~\$99.67~~ **\$94.69**
1 L Application Bottle with Spray Head
HCK453 / ~~\$6.95~~

All prices exclude GST & freight. Only while stocks last.



24mm Day Labels

Rolls of 1000

- Sunday Black / DW1 Monday Blue / DW2
 - Tuesday Yellow / DW3 Wednesday Red / DW4
 - Thursday Brown / DW5 Friday Green / DW6
 - Saturday Orange / DW7
- \$9.99 \$7.99 roll**

Square Day Labels

Rolls of 250

- Sunday Black / DW11 Monday Blue / DW12
 - Tuesday Yellow / DW13 Wednesday Red / DW14
 - Thursday Brown / DW15 Friday Green / DW16
 - Saturday Orange / DW17
- \$13.69 \$11.91 roll**

40mm Use By

Label

- DW18
 - Roll of 500
- \$17.80 \$14.95**

Fluoro Use By

Label

- DW8
 - Roll of 500
- \$19.40 \$14.94**

Batch / Shelf Labels (Rolls of 500)

- 102 x 52mm / DW9 / **\$30.49 \$27.75**
- 30 x 60mm / DW10 / **\$14.34 \$12.91**



- Digital Pocket Thermometer / HTR05 / **\$23.43 \$19.92**
- Thermometer with Folding Probe / HTR06 / **\$45.40 \$39.95**
- Fridge/Freezer Thermometer / HTR07 / **\$24.61 \$21.90**
- Digital Timer / HTR04 / **\$28.99 \$22.90**



- Dishwasher Safe Digital Thermometer / HTA14 / **\$78.99 \$63.98**
- Mini Digital Thermometer / HTA15 / **\$63.99 \$51.83**
- Fridge/Freezer Thermometer / HTA4 / **\$18.97 \$15.37**

Lightweight

Strong & Firm

Insulated

Easy to Clean

Recyclable

Lightweight transport systems for meal delivery

Insulated EPP Food Pan Carrier
HG112
640 x 435 x 630mmH
\$318.44 \$299.33

Insulated EPP Food Box
HG111
602 x 402 x 259mmH
\$73.17

Biodegradable in landfill

BioCling™ Biodegradable Cling Wrap
DFP9

Environmentally friendly biodegradable cling wrap that boasts crystal clear clarity, excellent memory, superior stretch and super sticky cling.

- 45cm x 600m • Food grade certified
- Biodegradable, microwaveable

\$59.95 \$42.56

Use colour coded products to prevent cross contamination

Blue Chopping Boards

450 x 300 x 13mm / HY9 / **\$21.09 \$14.97**

510 x 380 x 13mm / HY17 / **\$34.03 \$24.16**

495 x 350 x 18mm / HY23 / **\$39.77 \$28.24**

Blue: fish & seafood

Brown Chopping Boards

450 x 300 x 13mm / HY10 / **\$21.09 \$14.97**

510 x 380 x 13mm / HY18 / **\$34.03 \$24.16**

495 x 350 x 18mm / HY24 / **\$39.77 \$28.24**

Brown: cooked food

Green Chopping Boards

450 x 300 x 13mm / HY11 / **\$21.09 \$14.97**

510 x 380 x 13mm / HY19 / **\$34.03 \$24.16**

495 x 350 x 18mm / HY25 / **\$39.77 \$28.24**

Green: fruit & vege

Red Chopping Boards

450 x 300 x 13mm / HY12 / **\$21.09 \$14.97**

510 x 380 x 13mm / HY20 / **\$34.03 \$24.16**

495 x 350 x 18mm / HY26 / **\$39.77 \$28.24**

Red: raw meat

Yellow Chopping Boards

450 x 300 x 13mm / HY14 / **\$21.09 \$14.97**

510 x 380 x 13mm / HY22 / **\$34.03 \$24.16**

495 x 350 x 18mm / HY28 / **\$39.77 \$28.24**

Yellow: raw poultry

White Chopping Boards

450 x 300 x 13mm / HY13 / **\$21.09 \$14.97**

510 x 380 x 13mm / HY21 / **\$34.03 \$24.16**

495 x 350 x 18mm / HY27 / **\$39.77 \$28.24**

580 x 390 x 20mm / HY29 / **\$67.04 \$47.60**

White: dairy products

All prices exclude GST & freight. Only while stocks last.

8

designs shift to more flexible layouts

Restaurants and foodservice operators are moving forward to create unique experiences in response to the ongoing effects of the global pandemic.



Ghost Kitchens

Operators realign their business model to adapt to a kitchen-only facility catering to delivery and curbside orders.



Pick-up Windows

Additional counter, shelves or converted stations for delivery and order pick ups.



Expanded Outdoor Space

Renovated outdoor spaces allowing the area to be used throughout all four seasons.



Innovative Barriers

Use of plexiglass barriers, dining pods and other ways of ensuring people don't sit too close to each other.

Source: Architectural Digest



Start your next project with us ...

The SHL Projects Team is a partnership of Southern Hospitality Sales, Project Design Team, Project Stainless Ltd, Project Mechanical Services Ltd and Project Delivery Team within the Southern Hospitality Group that combines their expertise to successfully deliver projects within the hospitality industry.

PROJECT DESIGN TEAM

Project Design Team specialise in quality hospitality kitchen design and planning.



Project Mechanical provides and manufactures quality commercial kitchen ventilation systems.



PROJECT SALES TEAM

The Project Sales Team comprises of experienced chefs, bakers, hospitality staff and industry specialists who can provide you with the right advice when starting your next project.



Project Stainless provides an extensive stainless steel fabrication service able to deliver customised stainless steel at competitive prices.

PROJECT DELIVERY TEAM

The Project Delivery Team provides a complete project management service delivered in full and on time.

9

integration of technology

Maximise the performance and efficiency of your equipment.

ROS Polish Free Filtration Unit

EW29

Compatible with all Professional and Premium Series dishwashers and glasswashers.

~~\$3,200.00~~ **\$2,496.00**



STARLINE by WASHTECH

ROS Polish Free Filtration Unit

Designed to keep up with the operational requirements while providing:



Cost Savings
Through reduced labour requirements and glass breakages



Reduced risk of injury to staff



Consistent high quality finish for all glassware and cutlery



STARLINE by WASHTECH

M2C Professional Passthrough with Heat Recovery Unit

EW17

Cleans up to 1500 glasses or 1080 plates per hour.

Supplied with 2 x 500mm dishracks, 1 x cup rack and 2 x cutlery containers.

3 phase power for fast recovery between cycles.

~~\$10,990.00~~ **\$8,572.00**

Low Daily Rent **\$17.87**



HEAT CONDENSER UNIT

The M2C's C3 Condenser is a full heat recovery unit which preheats cold water supply, significantly reducing the steam emissions and energy consumption.

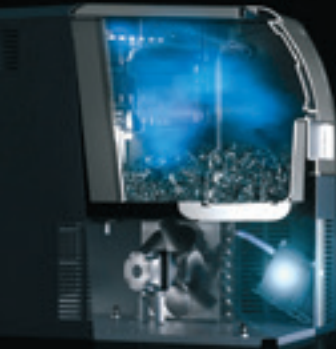
- Significant energy savings
- Lower infrastructure costs—can be installed without an extraction canopy
- Reduced water treatment costs
- Improved working environment due to minimal emissions



XSafe Scotsman®

A natural sanitation system integrated inside the machine that ensures absolute cleaning and hygiene.

An ice machine which **kills 99% of viruses** all by itself!



Low Daily Rent **\$6.73**



ECM56AS OX Ice Machine 29/12.5kg with Drain Pump

EIS58

Daily production capacity: up to 32kg

Produces gourmet ice cubes

20g: 30dia x 34mmH

*Feet not standard

~~\$3,588.69~~ **\$3,229.82**

Low Daily Rent **\$9.17**



NU220AS OX Self Contained Ice Maker 100/37kg

EIS67

Daily production capacity: up to 100kg

Produces full dice cube 10g:

22W x 22D x 22mmH

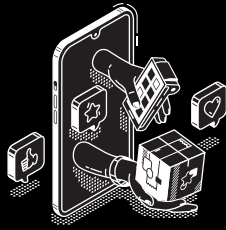
*Feet not standard

~~\$4,887.75~~ **\$4,398.98**

10

ordering online

Shift to digital channels for quick, convenient and 24/7 ways to place orders. Contactless ordering systems, reducing risk to your business.



Add to Favourites

Save time by marking your favourite items for easy re-ordering.



ONLINE STORE

Ordering made easy!

products



My Products

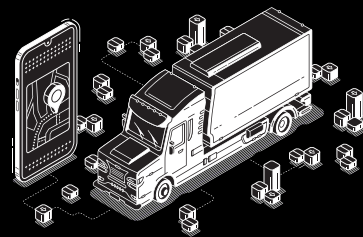
View your 12 month purchase history and sort products by 'Frequently Purchased'.

orders



My Web Orders

View current orders, track delivery by viewing courier details and easily place a re-order.



invoices



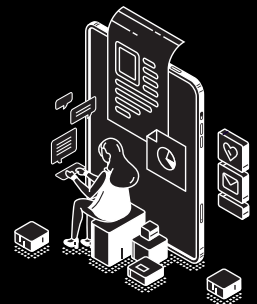
My Invoices

View previous invoices and credit notes.



Account Information

View and request updates to your account information.



accounts

We have major distribution points in the North and South Island to ensure quick delivery times.

What does this mean for you? We have invested in systems processes that aims to make our stock distribution and order fulfillment agile. You will know if we have items in stock and will be warned if the items are selling fast.

SOUTHERN HOSPITALITY LTD

Albany, Auckland ■ Newmarket, Auckland ■ Whangarei ■ Hamilton ■ Tauranga ■ New Plymouth ■ Napier
Palmerston North ■ Wellington ■ Nelson ■ Christchurch ■ Queenstown ■ Dunedin ■ Invercargill

weborders@southernhospitality.co.nz ■ www.southernhospitality.co.nz

Freephone: 0800 503 335 ■ Spare Parts: 0800 504 504