

NEW

**ACCOLADE
CLAYSTONE LAVA**

Our new offering from Accolade utilising their renown manufacturing processes to produce exciting commercial, fully vitrified designs. Claystone boasts the same alumina-rich body for increased strength, chip resistance and heat retention. With the characteristics of hand-thrown pottery, the Claystone design complements the chefs artistic flair for best food presentation and is a natural addition to a restaurant dining table.



Code	Description	Ctn Qty	Price
CA250	18cm Rice Bowl	6	\$13.26
CA247	24cm Deep Plate ec	6	\$13.18
CA248	29cm Deep Plate ec	6	\$25.12
CA241	6cm Dipper	6	\$5.19
CA242	9.5 x 22cm Chefs Tray	6	\$14.56
CA243	12 x 27cm Chefs Tray	6	\$18.20
CA244	16 x 36cm Chefs Tray	6	\$25.48
CA245	22cm Deep Oval Bowl	6	\$13.88
CA246	26.5cm Deep Oval Bowl	6	\$18.20
CA249	16cm Tapas Dish ec	6	\$8.97

The ridges in the texture of the Claystone crockery help to elevate and lift your food presentation.



CLAYSTONE ICE

Code	Description	Ctn Qty	Was (Ea)	Now (Ea)
CA269	16cm Tapas Dish ec	6	\$8.97	\$7.89
CA270	18cm Rice Bowl	6	\$13.26	\$11.67
CA267	24cm Deep Plate ec	6	\$13.18	\$11.60
CA268	29cm Deep Plate ec	6	\$25.12	\$22.11
CA265	22cm Deep Oval Bowl	6	\$13.88	\$12.21
CA266	26.5cm Deep Oval Bowl	6	\$18.20	\$16.02
CA262	9.5 x 22cm Chefs Tray	6	\$14.56	\$12.81
CA263	12 x 27cm Chefs Tray	6	\$18.20	\$16.02
CA264	16 x 36cm Chefs Tray	6	\$25.48	\$22.42
CA261	6cm Dipper	6	\$5.19	\$4.57

CLAYSTONE CARBON

Code	Description	Ctn Qty	Was (Ea)	Now (Ea)
CA260	18cm Rice Bowl	6	\$13.26	\$11.67
CA252	9.5 x 22cm Chefs Tray	6	\$14.56	\$12.81
CA253	12 x 27cm Chefs Tray	6	\$18.20	\$16.02
CA254	16 x 36cm Chefs Tray	6	\$25.48	\$22.42
CA257	24cm Deep Plate ec	6	\$13.18	\$11.60
CA258	29cm Deep Plate ec	6	\$25.12	\$22.11
CA251	6cm Dipper	6	\$5.19	\$4.57
CA255	22cm Deep Oval Bowl	6	\$13.88	\$12.21
CA256	26.5cm Deep Oval Bowl	6	\$18.20	\$16.02
CA259	16cm Tapas Dish ec	6	\$8.97	\$7.89

All prices exclude GST & freight. Only while stocks last.

ec LIFETIME EDGE CHIP REPLACEMENT WARRANTY



fine NEW ZEALAND
food

13-15 JUNE 2021

VISIT
SOUTHERN
HOSPITALITY
AT STAND F16

OLD SCHOOL GLAMOUR



Code	Description	Carton Qty	Was (Ea)	Now (Ea)	Code	Description	Carton Qty	Was (Ea)	Now (Ea)
GAR220	Granity 240ml Old Fashioned	12		\$1.14	GM419	Rock Bar Peach 270ml Tumbler	12		\$3.00
GAR28	Granity 270ml Dbl Old Fashioned	24		\$1.37	GB13	Excalibur 200ml Dbl Old Fashioned	12	\$2.89	\$2.46
GAR34	Granity 200ml Old Fashioned	12		\$1.14	GL226	Hobstar 350ml Dbl Old Fashioned	12	\$5.95	\$5.47
GM417	Rock Bar Ice 270ml Tumbler	12		\$3.00	GL227	Hobstar 470ml Hi Ball	12	\$5.95	\$5.47

TIMELESS CHARM



Code	Description	Carton Qty	Was (Ea)	Now (Ea)	Code	Description	Carton Qty	Was (Ea)	Now (Ea)
GM369	Timeless 210ml Old Fashioned	24	\$3.61	\$3.21	GM404	Timeless 725ml Cocktail Stirring	1	\$6.49	\$5.97
GM370	Timeless 355ml Dbl Old Fashioned	12	\$3.61	\$3.21	GM405	Timeless 62ml Shot	12	\$1.67	\$1.54
GM371	Timeless 300ml Hi Ball	24	\$4.75	\$4.23	GM406	Timeless 230ml Martini	12	\$3.89	\$3.58
GM372	Timeless 450ml Hi Ball	12	\$4.75	\$4.37	GM407	Timeless 270ml Coupe Saucer	12	\$4.17	\$3.84
GM432	Timeless 330ml Wine	12	\$5.53	\$5.09	GM402	Timeless 480ml Cocktail Goblet	12	\$4.77	\$4.39



TOP SHELF STYLE



Code	Description	Carton Qty	Was (Ea)	Now (Ea)	Code	Description	Carton Qty	Was (Ea)	Now (Ea)
GM434	Connexion 350ml Dbl Old Fashioned	6	\$2.61	\$2.40	GL108	Spksy 247ml Coupe	12	\$8.91	\$7.66
GM435	Connexion 350ml Hi Ball	6	\$2.61	\$2.40	GL118	192ml Martini	6	\$8.78	\$7.55
GM437	Connexion 215ml Coupe	6	\$4.59	\$4.22					

GREAT DEALS ON DISPLAYWARE



Frostone Acacia Folding 2 Tier Riser (Frame Only)

- HTC103
- 584W x 203D x 292mmH
 - Fits HTC52, HTC63 faux slate surfaces

Was \$75.32
\$37.66



Frostone Acacia Folding 2 Tier Riser (Frame Only)

- HTC104
- 381W x 203D x 292mmH
 - Fits HTC39, HTC53 faux slate surfaces

Was \$62.03
\$31.02



Melamine Faux Slate Surfaces

- HTC39
- 267 x 324mm
 - Fits HTC104

Was \$60.66
\$39.43

- HTC53
- 172 x 324mm
 - Fits HTC104

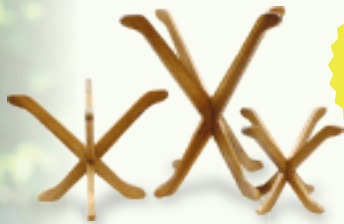
Was \$48.30
\$24.15



Acacia Fold-A-Way Risers (Set of 3)

- HTC105
- Small: 265 x 265 x 190mm
 - Medium: 368 x 368 x 280mm
 - Large: 419 x 419 x 381mm

Was \$177.22
\$88.61



Unique way to display different sized bowls and platters



Cascade Acacia Risers (Set of 3)

- HTC101
- Small: 438 x 200 x 108mm
 - Medium: 499 x 200 x 156mm
 - Large: 599 x 200 x 200mm

Was \$376.58
\$188.29



Geo-Mat Expandable Risers (Set of 3)

- HTC102
- 140 x 140 x 114mm

Was \$48.73
\$24.37



Barclay Bamboo Wood Risers (Set of 3)

- HTC106
- Set includes sizes: 127mm, 178mm and 230mm squares

Was \$226.71
\$113.36



70mmH Acacia Wood Wooden Crates

Code	Description	Was	Now
HTC93	1/2 GN	\$68.38	\$34.19
HTC94	1/3 GN	\$55.83	\$27.92
HTC95	1/4 GN	\$46.52	\$23.26



1/2 GN Acacia Wood Wooden Crates

- HTC99
- 159mmH

Was \$148.87
\$74.44



Perfect for your grab-n-go station...can fit beverages or single serve jars!



Serve multiple dipping sauces in ramekins

Acacia Wood Flight Paddle (Reversible)

- HTC108
- Holds 4 glasses (up to 57mm dia)

Was \$29.68
\$20.78



Frostone Black Melamine Bowls

Code	Description	Was	Now
HTC88	178 x 108mm	\$42.09	\$21.05
HTC87	250mm Square	\$93.04	\$44.66



Frostone White Melamine Bowls

Code	Description	Was	Now
HTC89	165mm Square	\$44.30	\$22.15
HTC90	250mm Square	\$93.04	\$46.52
HTC91	178 x 108mm	\$42.09	\$21.05

All prices exclude GST & freight. Only while stocks last.

SMART SOLUTIONS FOR GREAT COFFEE

Perfect for making niche drinks or customised orders

fiamma

SINCE 1977



Caravel II Tall Semi Auto 2 Group Espresso Machine

- EF21
- Semi-automatic manual coffee dosage
 - Work area allows 14cm high cups and trays for smaller cups
 - 1 x water tap and 2 x steam wands
 - Boiler capacity: 11 litre
 - 665W x 563D x 530mmH

Was \$5,280.51
\$4488.43

LOW DAILY RENT: \$9.36*



Quadrant 2 DSP Volumetric 2 Group Espresso Machine

- EF22
- Programmable dosage
 - One touch electronic controls
 - 1 x water tap and 2 x steam wands
 - Boiler capacity: 11 litre
 - 750W x 600D x 595mmH

Was \$7,040.70
\$5984.60

LOW DAILY RENT: \$12.48*



User friendly for all barista experience levels

Quadrant 3 DSP Volumetric 3 Group Espresso Machine

- EF23
- Programmable dosage
 - One touch electronic controls
 - 1 x water tap and 2 x steam wands
 - Boiler capacity: 18 litre
 - 960W x 600D x 595mmH

Was \$8,470.83
\$7200.21

LOW DAILY RENT: \$15.01*

Marina Coffee Grinder

EF6
The perfect grinder for small to moderate consumption. Easy to handle with precise dosage.

- Hopper capacity: 1kg
- 50mm diameter grindstones
- 155W x 305D x 450mmH

Was \$758.25
\$644.51



MCF65A Automatic Coffee Grinder

- EF24
- Micrometric regulation
 - Daily production: up to 4kg
 - Hopper capacity: 1.4kg
 - Doser capacity: 300g
 - 230W x 360D x 600mmH

Was \$1,246.17
\$1059.24

LOW DAILY RENT: \$2.21*

BRIVILOR BONAMAT



Double Hot Plate

- EBV1
- Takes two coffee jugs
 - 404W x 195D x 61mmH
- * Coffee pots not included

Was \$449.06
\$395.17



Novo2 Coffee Pourer

- EBV3
- Capacity per hour: 18 litre approx
 - 214W x 391D x 424mmH
- * Coffee pots not included

Was \$855.36
\$752.72



Iso Coffee Pourer

- EBV2
- Includes 1.9 litre vacuum jug
 - Capacity per hour: 18 litre approx
 - 214W x 391D x 465mmH

Was \$983.07
\$865.10

Filters for Coffee Pourer Machines

- HBV4
- 250 pack
- Was \$14.35
\$12.63 per pack

DELTA
FOODSERVICE



11 Litre Coffee Urn

- ED133
- Double layer body with twist lock lid
 - Non-drip plastic tap
 - Overheat protection and concealed heating element
 - 348W x 464D x 464mmH

Was \$273.67
\$246.30



Hot Water Urns

- Double layer body with twist lock lid
- Water level indicator and water gauge
- Non-drip plastic tap
- Overheat protection and concealed heating element
- Temperature controller 30~110°C
- Brushed stainless steel

12 Litre

- ED134
- 348W x 464D x 464mmH
- Was \$232.85

\$209.57

20 Litre

- ED135
- 348W x 464D x 602mmH
- Was \$272.92

\$245.63

SilverChef.

*For Rent-Try-Buy agreements a refundable security bond may be asked based on your trading history if less than two years, as well as one week rent in advance. Daily rental price is GST inclusive.

All prices exclude GST & freight. Only while stocks last.

MAKE THE PERFECT LATTÉ ART

BREW
EST 2015



Infusion Coffee Plungers

Code	Description	Was	Now
HMP38	350ml	\$21.25	\$12.96
HMP39	600ml	\$30.57	\$19.87
HMP40	1 Litre	\$39.35	\$24.79



Stainless Steel Milk Jugs

Code	Description	Was	Now
HB23	350ml	\$12.18	\$9.99
HB24	600ml	\$16.73	\$13.72
HB25	1 Litre	\$23.40	\$17.78
HB26	1.5 Litre	\$34.09	\$20.79
HB27	2 Litre	\$42.48	\$24.64

Latte Pro™



600ml Milk Jug

HPP1

- Integrated thermometer on both sides of the jug = accurate temperature for heating milk
- Durable and dishwasher safe

Was \$46.57

\$41.45

COFFEE ESSENTIALS



Cooper Atkins Espresso Thermometer

HTA2

Was \$39.71

\$26.61

Frothing Thermometer

HL70

Was \$16.82

\$9.92



Nylon Brush for Group Head

HAS1

Was \$13.80

\$12.14



Coffee Tamp

HPW1

Was \$37.01

\$35.16

Black Barista Bags

DCP19

• 25 pack

Was \$11.30

\$9.94



Freestanding Coffee Dump Box with Bag

HTF3

Was \$159.16

\$119.37

It's almost a sin not to serve great coffee in a lovely glass!



The most versatile glassware!

Duralex glassware is equally suitable for cold or hot drinks, conveniently stackable, microwave, freezer and dishwasher safe, shock and chip resistant.

Picardie Clear Glass Tumblers

• Carton Qty: 12

Code	Description	Was	Now
GTK244	90ml Piccolo	\$1.98	\$1.80
GTK245	220ml	\$3.06	\$2.78
GTK246	250ml	\$3.92	\$3.68
GTK247	310ml	\$4.32	\$3.93

All prices exclude GST & freight. Only while stocks last.



Speed up your service!

EXPRESS CAFÉ SOLUTIONS

Downtime is rare when you have the most reliable equipment to help you with your menu.

Speed up your service and deliver consistent food that will make your customers keep coming back for more!



• 3000W for fast & easy cooking
• Cooking modes for flexibility & finer cooking controls
• Safety Shut Off



Commercial Induction Cooker ESM15

- Double fans for extra cooling of electronics
- Multi protection function design
- 350W x 468D x 130mmH

Was \$890.00
\$783.²⁰



2000W Commercial Benchtop Induction Cooker ED45

- Electronic overheating protection
- Power control knob
- LED display
- 294W x 374D x 56mmH

Was \$198.95
\$175.⁰⁸



Electric Griddle ESM8

- 8mm steel cooking plate
- 1 working zone
- Temperature up to 300°C
- Cooking surface: 548 x 350mm

Was \$646.59
\$569.⁰⁰



Deep Fryer ESM14

- 8 litre single tank
- Capacity: 17kg/hour from chilled
- 270W x 410D x 360mmH

Was \$569.88
\$501.⁴⁹



15A Conveyor Toaster ED10

- 360 slices per hour
- 3700W x 640L x 400mmH

Was \$1,474.58
\$1297.⁶³

LOW DAILY RENT: \$2.71*



11 Litre Soup Urn ED15

- Stainless steel food container
- 320mm dia x 350mmH

Was \$245.00
\$215.⁶⁰



GR4.1L Single Contact Grill EF3

- Durable cast iron grills
- Flat bottom plate/ribbed top plate
- Adjustable height for delicate foods
- 330W x 435D x 240mmH

*Image shown with two ribbed plates
Was \$939.78

\$827.⁰¹

GR8.2L Double Contact Grill EF4

- Durable cast iron grills
- Flat bottom plate/ribbed top plate
- Adjustable height for delicate foods
- 620W x 435D x 240mmH

*Image shown with two ribbed plates
Was \$1,595.04

\$1403.⁶⁴

LOW DAILY RENT: \$2.93*



TRS20.2 Single Deck Toaster EF14

- 6 slice deck toaster
- 15 minute timer and continuous service mode
- Independent controls top and bottom
- 525W x 305D x 305mmH

Was \$409.33
\$360.²¹



Whether you're operating a small café, a mobile kitchen or a bustling breakfast buffet, we have the right Fiamma equipment for you!



- Contemporary styling
- Glass lid with wide viewing area
- Mechanical infinite stop hinge
- Use chafer with a stand and fuel gel to make mobile

PREMIUM INDUCTION CHAFERS



6.5 Litre Round Induction Chafer
BSF8

Was \$1,409.00
\$1282.19

LOW DAILY RENT: **\$2.67***



Stackable Stand for Round Induction Chafer
BSF10

Was \$281.80
\$256.44



6.5 Litre 2/3 GN Induction Chafer
BSF9

Was \$1,409.00
\$1282.19

LOW DAILY RENT: **\$2.67***



Stackable Stand for 2/3 GN Induction Chafer
BSF11

Was \$281.80
\$256.44



Round Stainless Steel Food Pan
BSF12

Was \$111.82
\$101.76



2/3 GN Stainless Steel Food Pan
BSF13

Was \$111.82
\$101.76



Round Food Pan
CF70

• 380 x 65mmD
Was \$80.51
\$73.26



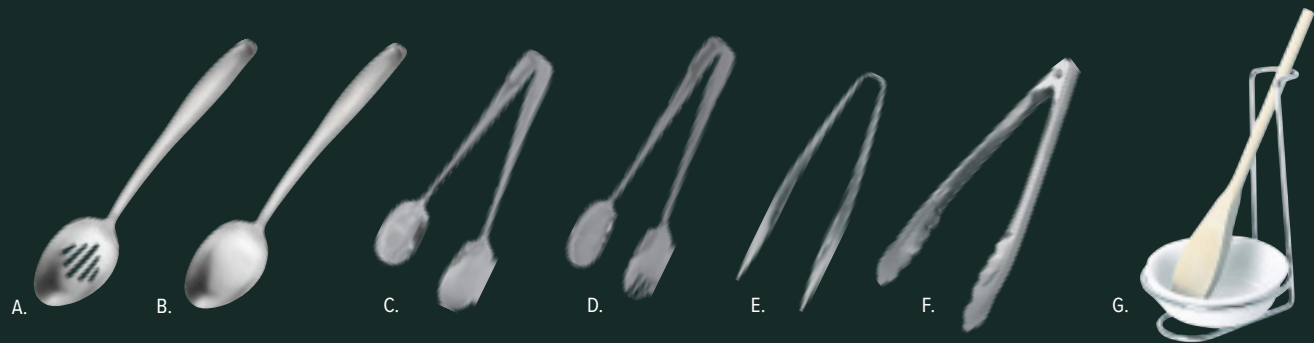
Round Divided Food Pan
CF71

• 380 x 65mmD
Was \$97.77
\$88.97



2/3 GN Food Pan
CF72

• 354 x 325mm
Was \$92.02
\$83.74



Code	Description	Was	Now
A. HTC58	350mm Stainless Steel Slotted Buffet Spoon	\$22.58	\$19.42
B. HTC59	350mm Stainless Steel Buffet Spoon	\$27.06	\$23.27
C. HSG35	250mm Stainless Steel Serving Tongs	\$11.69	\$10.05
D. HSG36	250mm Stainless Steel Salad Tongs	\$13.13	\$11.29

Code	Description	Was	Now
E. HTC42	155mm Stainless Steel Buffet Tongs	\$12.10	\$10.41
F. HTK415	230mm S/S Auto Lock Lightweight Tongs	\$13.26	\$12.60
G. HSH1	Buffet Utensil Rest	\$19.12	\$16.44

ACCOLADE MELAMINE SERVEWARE



Grey Stone 90 x 30mm Sauce Dish
HMF22 • Ctn Qty: 24
Was \$6.95
\$6.05 each



Grey Stone 100 x 50mm Sauce Dish
HMF23 • Ctn Qty: 12
Was \$7.70
\$6.70 each



Grey Stone 120 x 70mm Round Bowl
HMF21 • Ctn Qty: 12
Was \$8.55
\$7.44 each



Grey Stone 120 x 30mm Soy Dish
HMF24 • Ctn Qty: 12
Was \$7.75
\$6.74 each



Grey Stone 240 x 170 x 40mm Irregular Oval Plate
HMF19 • Ctn Qty: 8
Was \$11.32
\$9.85 each



Grey Stone 180 x 70mm Round Bowl
HMF20 • Ctn Qty: 6
Was \$11.65
\$10.14 each

All prices exclude GST & freight. Only while stocks last.

OUR PERFECT PIZZA PACKAGE



PM60.60 Electric Single Deck Pizza Oven

- EMR13
- Refractory brick cooking surface
 - Fits 4 x 30cm pizzas per deck
 - External: 850W x 930D x 370mmH
 - Internal: 610W x 660D x 140mmH per deck (Total surface: 0.8m²)

Was \$3,325.00

\$2992.50

LOW DAILY RENT: \$6.24*



- **Smart heating techniques:** The thicker heating elements guarantee an excellent uniformity of baking.
- **Protected internal lighting:** The internal lighting is inserted into a compartment to protect it against crashes and breaks.
- **Electro mechanic control board:** The control board makes oven management easy and instant.

PD60.60 iDeck Electric Pizza Oven

- EMR3
- Fits 4 x 30cm pizzas per deck
 - 2 decks with refractory brick cooking surface
 - 850W x 840D x 660mmH
- * Shown on optional stand (EMR1)

Was \$5,256.00

\$4730.40

LOW DAILY RENT: \$9.86*



Stand for PD60.60 iDeck Electric Pizza Oven

- EMR1
- 850W x 840D x 898mmH (with castors)

Was \$1,062.00

\$955.80

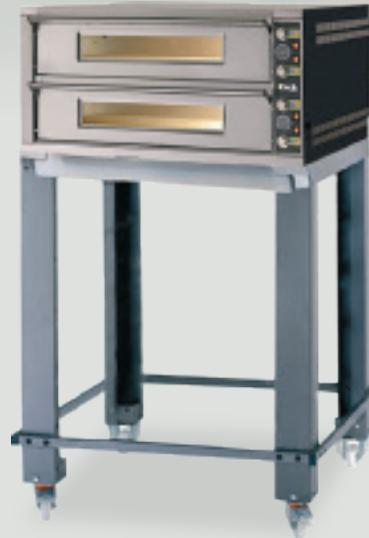
PD105.65 Electric 2 Deck Pizza Oven

- EMR4
- Refractory brick cooking surface
 - Fits 6 x 30cm pizzas per deck
 - External: 1320W x 890D x 660mmH
 - Internal: 1060W x 660D x 140mmH per deck (Total surface: 1.4m²)
- * Shown on optional stand (EMR2)

Was \$7,956.00

\$7160.40

LOW DAILY RENT: \$14.93*



Stand for PD105.65 iDeck Electric Pizza Oven

- EMR2
- 1316W x 885D x 903mmH (with castors)

Was \$1,098.00

\$988.20



Well positioned Dough Breaker

Standard Timer

Solid heavy duty Stainless Steel



IM38D 2 Speed Spiral Mixer

- EBD3
- Dough: 38kg
 - Geared motor system
 - Bowl dimensions: 452dia x 360mmH
 - 818W x 480D x 770mmH

Was \$6,502.56

\$5722.25

LOW DAILY RENT: \$11.93*



MECNOSUD



IM25D 2 Speed Spiral Mixer

- EBD4
- Dough: 25kg
 - Geared motor system
 - Bowl dimensions: 400dia x 260mmH
 - 762W x 430D x 770mmH

Was \$5,155.68

\$4537.00

LOW DAILY RENT: \$9.46*

Twin Rollers
Safety Covers on Rollers



Foot Pedal Control

DL40P 40cm Pizza Roller

- EBD8
- Dough weight: 100/700gm
 - Pizza dimensions: 40cm
 - Double pass dough roller
 - 520W x 450D x 750mmH

Was \$3,345.12

\$2943.71

LOW DAILY RENT: \$6.14*

SilverChef.

*For Rent-Try-Buy agreements a refundable security bond may be asked based on your trading history if less than two years, as well as one week rent in advance. Daily rental price is GST inclusive.

All prices exclude GST & freight. Only while stocks last.

robot coupe®

PIZZA PREP STARTER PACK

CL50 Vegetable Preparation Machine + 2 Slicer Blades

ERC101

Was \$3,484.00

\$3205.²⁸

LOW DAILY RENT: \$6.68*



CL50 Vegetable Preparation Machine

- Large hopper (139cm² surface area)
- Processing up to 500kg/hr
- Single phase

* Offer expires 30th June 2021



2mm Slicer

4mm Slicer

PLUS FREE

7mm Grater Disc and Wall Mounted Disc Holder*



WORTH \$434

BAKERY ESSENTIALS

730 x 405mm Flat Perforated Baking Tray

HWB2

- 16" tray
- 2.0 aluminium alloy
- Swayed edges

Was \$63.74

\$39.⁵²



22cm Round Proving Basket

HTB2

Was \$39.35

\$29.⁹¹

27 x 13cm Proving Basket

HTB3

Was \$42.55

\$30.⁶⁴

240 x 300mm Pan Grabber

HC4

Was \$14.02

\$10.⁵²



18 x 13" Perforated Bun Pan

HSF1

Was \$39.80

\$19.⁹⁰



406mm Silicone Oven Mitt

HC1

Was \$11.36

\$8.⁰⁷



430mm Terry Oven Mitt

HC2

Was \$18.69

\$13.²⁷



80 Litre White Ingredient Bin

HG72

- Clear lid
- Castors

Was \$332.60

\$289.³⁶



36cm Silicone Spatula

HCH131

Was \$16.09

\$14.⁶⁴



36cm Silicone Spoon Spatula

HCH136

Was \$17.92

\$16.³¹

SilverChef.

*For Rent-Try-Buy agreements a refundable security bond may be asked based on your trading history if less than two years, as well as one week rent in advance. Daily rental price is GST inclusive.

All prices exclude GST & freight. Only while stocks last.



CUSTOM MADE STAINLESS STEEL

Stainless steel manufactured to suit the most demanding requirements.



If you are planning to build a new kitchen or renovate your existing one—call your SHL rep and get expert advice on the best stainless steel solutions for you.

Competitive design, fabrication and installation of all types of stainless steel benches, sinks, extraction hoods, spine walls, wall linings, shelves, handrails and all other stainless steel custom fabrication.



**3 FACTORIES—AUCKLAND,
WELLINGTON, CHRISTCHURCH
FREEPHONE: 0800 503 335**

CALL NOW FOR YOUR FREE MEASURE & QUOTE!



**LOW VELOCITY • ENERGY SAVING DESIGN
REDUCED FIRE RISK • SUPERIOR PERFORMANCE**

Proudly manufactured in New Zealand.



Features & Benefits

- Energy saving with lower extract volumes
- Spot cooling for improved operator comfort
- Reduced maintenance required for ductwork
- Reduced fire risk
- Stainless steel baffle filters, UL listed
- IP65 rated LED down lights
- Designed and manufactured in New Zealand
- Great aesthetic design
- UV filtration available
- Reduces required install time on site
- Quotations and drawings all prepared in New Zealand
- Latest induction technology, improving capture and containment



**CALL 0800 503 335 FOR A
FREE MEASURE & QUOTE**

All prices exclude GST & freight. Only while stocks last.

NEW ZEALAND MADE

WHY SUPPORT NZ MANUFACTURING?

The COVID pandemic has had dire financial impact on businesses, it is more important than ever to support local manufacturing. The NZ based manufacturing businesses we support help keep the skill base, experience and knowledge alive and growing here in NZ. Like us they are committed to local production and local jobs!



These are our key brands of cooking equipment and all of these brands are manufactured by Moffat right here in Christchurch. Moffat have permanently located their manufacturing facility here in NZ, this investment in local infrastructure and support provides a whole other level of value to our NZ market.



Talk to our reps or visit our Online Store and showrooms today to get the best products at great prices!
We carry a large range of commercial kitchen equipment to suit every business.



With every E603 or E604 get a
FREE
SCOOP & SHAKER PACK*



WORTH \$138

*T&C's apply. Valid from 1 May 2021 to 30 June 2021.

FIND THE PERFECT FRYER

Find the perfect fryer for your kitchen that gives you the power to deliver high output, high quality products time and time again.



E603 Single Tank Electric Fryer

- EMB43
- 30 litre oil capacity
 - 17kW for high performance
 - Large floating area
 - 3 x heavy duty fry baskets
 - 600W x 585D x 1040mmH

Was \$5,145.00

\$3961.65

LOW DAILY RENT: **\$8.26***

E604 Twin Tank Electric Fryer

- EMB44
- 30 litre oil capacity each pan
 - 17kW for high performance
 - Large floating area
 - 6 x heavy duty fry baskets
 - 1200W x 585D x 1040mmH

Was \$8,635.00

\$6648.95

LOW DAILY RENT: **\$13.86***



SilverChef.

*For Rent-Try-Buy agreements a refundable security bond may be asked based on your trading history if less than two years, as well as one week rent in advance. Daily rental price is GST inclusive.

All prices exclude GST & freight. Only while stocks last.

FOOD. IT'S YOUR BUSINESS.



**REINVIGORATE YOUR PASSION.
RECEIVE EXPERT KNOWLEDGE.
RECONNECT WITH THE INDUSTRY.
RECOVER YOUR BUSINESS.**

New Zealand's leading foodservice, hospitality and food retail trade event - Fine Food New Zealand is set to be the most critical industry event in 2021.

Enter the code **STHHOSP** for free entry

All registrations after 12 June will incur a \$25 gate fee.

**13 – 15 June 2021
ASB SHOWGROUNDS
AUCKLAND NZ
finefoodnz.co.nz**



Livi
Everyday
2 Ply Jumbo Toilet Roll
DC404
• 300m
• 8 rolls per polybag
Was \$39.50
\$34.76 per polybag



Livi
Essentials
Slimfold Paper Towels
DC101
• 200 sheets
• 20 packs per carton
Was \$52.75
\$48.00 per carton



Livi
Essentials
2 Ply Wrapped Toilet Tissue
DC301
• 400 sheets
• 48 rolls per carton
Was \$38.42
\$36.50 per carton



Livi
Impressa
6 Pack 3 Ply Toilet Tissue
DC108
• 225 sheets
• 8 packs per polybag (48 rolls)
Was \$41.87
\$34.75 per polybag



Blue Cloth Roll
DH1
• 45m
• 30 x 40cm
\$11.95 per roll



Premium Heavy Duty Cloth Rolls
Blue DH2
Red DH4
• 45m • 30 x 40cm
• 90 sheets per roll
Was \$29.05
\$14.53 per roll



Probe Wipes for Thermometer
DC1
• Pack of 100
Was \$9.62
\$8.95



Terra Antibacterial Wipes
DAP1
• Pack of 40
Was \$6.99
\$5.94



4 Pack Microfibre Cloths
General Purpose (Green) HMT905
Glass Polishing (Blue) HMT908
\$10.64 per pack



50g Stainless Steel Scourer
HL45
\$2.55



ECOWISE
The Smarter Side of Green Cleaning

5 Litre Griddle Clean
HCK447
Was \$67.46
\$61.39

1 Litre Griddle Clean
HCK448
Was \$26.13
\$23.78

All prices exclude GST & freight. Only while stocks last.

SOUTHERN HOSPITALITY LTD

Albany, Auckland ■ Newmarket, Auckland ■ Whangarei ■ Hamilton ■ Tauranga ■ New Plymouth ■ Napier
Palmerston North ■ Wellington ■ Nelson ■ Christchurch ■ Queenstown ■ Dunedin ■ Invercargill
weborders@southernhospitality.co.nz ■ www.southernhospitality.co.nz
Freephone: 0800 503 335 ■ Spare Parts: 0800 504 504