

AL8C

Passthrough Warewasher c/w Heat Recovery Unit
W 905mm x D 760mm x H 2015mm

Starline warewashers are built to improve the efficiency of operations washing oversized and/or heavily soiled items, from bakeries to production kitchens, supermarkets to hospitals. This is achieved with a continuous and consistent wash process throughout the day that is easy on your staff. With highly efficient water consumption rates, Starline warewashers are also light on the environment and operating costs.

The AL8C is a powerful, highly durable, simple-to-use and easy-to-maintain passthrough warewasher. It features Starline Hybrid Controls which combine IP65 stainless switches, tried-and-tested switchgear, with a customisable electronic timer. Built with a large wash chamber and carefully counterbalanced passthrough door, the AL8C is ideal for washing bins, crates, bowls and other oversized items.

The AL8C also features a highly efficient heat recovery unit which ensures minimal energy consumption and steam emissions, for even lower operating costs and an improved working environment.

Since 1981 Starline dishwashers have been constructed from heavy-duty stainless steel, and are engineered specifically for local conditions and regulations. Backed by the most extensive service network and spare parts inventory in the region, your Starline AL8 will not let you down.

Special Features

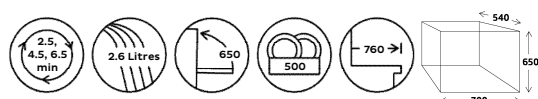
- Integrated heat recovery unit which preheats the cold water supply, significantly reducing steam emissions, energy consumption

Standard Features

- Versatile 2.5, 4.5 and 6.5 minute wash cycles
- Large internal wash chamber with useable area of W 700mm x D 540mm x H 650mm
- Low cold water consumption of 2.6 litres per cycle
- Starline Hybrid Controls
- Self cleaning cycle
- Easy Installation supplied complete with:
 - Water supply hose
 - Detergent and rinse aid pumps with injector lines
 - No commissioning required
- High powered wash system
- Suitable for connection to low inlet water temperature and/or pressure (break tank and rinse pump fitted)
- Heavy-duty stainless steel construction and wash manifold
- Robust stainless steel wash and rinse arms with precision stainless steel jets
- Double heavy duty stainless steel filtration system including dual scrap trays and separate wash inlet filter
- Wash chamber easily accessible via counter-sprung hood
- Easy loading with inline bench work
- Comprehensive 12 month Starline warranty

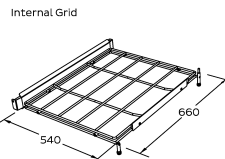
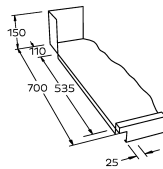
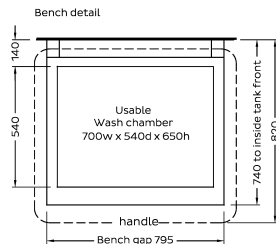
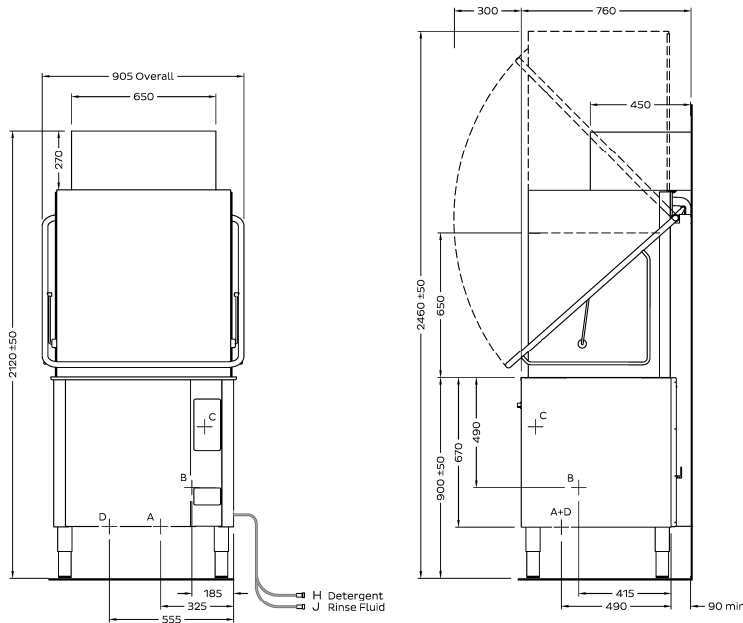
Includes:

- 1 x 500mm x 600mm dish rack (600 70042)
- 1 x 500mm x 600mm cup rack (600 70043)
- 1 x 435mm cup cover (K0452)
- 1 x cutlery basket (C660508)
- 1 x cutlery container (C660503)



AL8C

Passthrough Warewasher c/w Heat Recovery Unit
W 905mm x D 760mm x H 2015mm



ISO9001

All Starline products are designed and manufactured by Washtech using the internationally recognised ISO9001 quality management system, covering design, manufacture and final inspection, ensuring consistent high quality at all times.

In line with policy to continually develop and improve its products, Washtech reserves the right to change specifications and design without notice.

WASHTECH LTD
PO Box 90-548
Auckland 1142
414 Rosebank Road
Avondale
Auckland 1026
New Zealand
Phone 09 829 0930
info@washtech.co.nz
www.starline.co.nz



On call service where you are. Washtech provides full service backup, 24 hours a day, 7 days a week with factory based technicians and a comprehensive nationwide network of independent service providers. STARLINE SERVICE 09 829 0923 © Copyright Washtech 2016 Version 1903

D Cold water	Temperature	20°C		
	Connection	3/4" male; hose supplied		
	Pressure	200-350kPa		
	Flow	10 litres per min		
	Quality	Potable - refer table		
	Backflow Prevention	Atmospheric Vacuum Breaker		
	Consumption	2.6 litres per cycle		
A Hot water (Fill Only)	Temperature	65°C		
	Connection	3/4" male; hose supplied		
	Pressure	200-350kPa		
	Flow	20 litres per min		
	Quality	Potable - refer table		
	Backflow Prevention	Atmospheric Vacuum Breaker		
B Waste	Connection	1.5" BSP		
	Line	2" BSP		
C Electrical	V	Hz	A/phase	max Kw
Three Phase	400	50	25	18.00

Dimensions	Machine	Packed
Width	905	1000
Depth	760	910
Height	2015	1970
Weight	180	203
Cubicmetres		1.80

Water Quality	Min	Max
pH	7	8
Hardness ppm	20	100
Cl-		100
SO ₄		400
Fe		0.1
Mn		0.5
Cu		0.05
Cl ₂		0.1

Refer operator manual for installation instructions. Isolating switch must be within 1m of, and not directly behind the machine.

an Ali Group Company



The Spirit of Excellence