

EVERSTEEL[®]



The reliability of T&S, now in **PREMIUM STAINLESS STEEL**

EVERSTEEL®

The reliability of T&S, now in
PREMIUM STAINLESS STEEL



T&S' EVERSTEEL® LINE: A CLASS BY ITSELF

- ✓ Superior-grade stainless steel
- ✓ Unparalleled build quality
- ✓ Surprisingly affordable
- ✓ Limited lifetime warranty



T&S' EVERSTEEL OPTIONS ARE AVAILABLE IN:

- Manual faucets
- Single lever faucets
- Pre-rinse units
- Low profile pre-rinse units
- Single lever pre-rinse units
- Spray valves
- Glass fillers
- Accessories



DESIGNED TO MEET THE FOLLOWING COMPLIANCE/CERTIFICATIONS

NORTH AMERICA

- ASME A112.18.1 / CSA B125.1
- NSF 61
- NSF 372

GLOBAL (ongoing)

- DVGW
- PUB
- WaterMark
- SASO



EverSteel standard and low profile pre-rinse units feature the **NEW STAINLESS STEEL S-0107-Y SPRAY VALVE**, a new patented design with more cleaning power and the highest durability of any spray valve on the market.

TABLE OF CONTENTS

- Pre-Rinse Units 1
- Single Lever Pre-Rinse Units 6
- Low Profile Pre-Rinse Units 7
- Pre-Rinse Unit Accessories 10
- ULTRARINSE® 13
- Glass Fillers 14
- Workboard Faucets 15
- Pantry Faucets 17
- Pantry Faucet Accessories 20
- Deck Mount Laboratory Faucets 21
- Wall-mount Laboratory Faucets 24
- Laboratory Faucet Parts 25



LOOKING FOR MORE INFORMATION?

Scan the QR Codes to access specific product categories or contact Customer Service via website chat, text, phone and email:

customerservice@tsbrass.com | tsbrass.com
864-834-4102 | 800-476-4103

EVERSTEEL®

Designed to last



FAUCETS

NOZZLE SHAPES AND SIZES

Including swing nozzle and gooseneck options

LEAD-FREE

Stainless-steel construction is completely lead-free for worry-free performance

GLOBAL CERTIFICATIONS

Designed to meet all global certification requirements.

INTERLOCKING SPLINES

Prevent walking, keeping the cartridge still and handles set

QUARTER-TURN CARTRIDGES

With built-in cross-flow prevention



BRUSHED SATIN FINISH

OUTLET DEVICE OPTIONS

Multiple flow rates support ideal function and efficiency

TRUE STAINLESS STEEL

Heavy-duty construction with stainless steel provides commercial-duty durability

PROVEN T&S DESIGN

EverSteel uses time-tested T&S designs to provide long-lasting reliability



COMMERCIAL-DUTY CONSTRUCTION
with professional-grade materials provides long-lasting durability.



LIMITED LIFETIME WARRANTY
for assurance and peace of mind.



EASY TO CLEAN
stainless steel resists staining and water spots.



NOW AVAILABLE WITH CERAMIC CARTRIDGES



A NEW CLASSIC
Same design as classic T&S faucets, now in true stainless steel.

S-0113-BY

- Single hole deck-mount mixing faucet
- 44" flexible hose with heat resistant handle
- 1.15 GPM spray valve (S-0107-Y)
- Quarter-turn Eterna cartridges with spring checks
- Lever handles with color coded indexes
- 6" adjustable wall bracket
- 18" flexible supply hoses with G1/2 female swivel connections (Compatible with 1/2" NPSM threads)



S-0113-CR-BY

- Same as S-0113-BY but with Cerama cartridges

S-0113-A12-BY

- Single hole deck-mount mixing faucet
- Add-on faucet with 12" nozzle
- 44" flexible hose with heat resistant handle
- 1.15 GPM spray valve (S-0107-Y)
- Quarter-turn Eterna cartridges with spring checks
- Lever handles with color coded indexes
- 6" adjustable wall bracket
- 18" flexible supply hoses with G1/2 female swivel connections (Compatible with 1/2" NPSM threads)



S-0113-12-CR-BY

- Same as S-0113-A12-BY but with Cerama cartridges

S-0113-B

- Single hole deck-mount mixing faucet
- 44" flexible hose with heat resistant handle
- 1.15 GPM spray valve (S-0107)
- Quarter-turn Eterna cartridges with spring checks
- Lever handles with color coded indexes
- 6" adjustable wall bracket
- 18" flexible supply hoses with G1/2 female swivel connections (Compatible with 1/2" NPSM threads)



S-0113-CR-B

- Same as S-0113-B but with Cerama cartridges

S-0113-A12-B

- Single hole deck-mount mixing faucet
- Add-on faucet with 12" nozzle
- 44" flexible hose with heat resistant handle
- 1.15 GPM spray valve (S-0107)
- Quarter-turn Eterna cartridges with spring check
- Lever handles with color coded indexes
- 6" adjustable wall bracket
- 18" flexible supply hoses with G1/2 female swivel connections (Compatible with 1/2" NPSM threads)



S-0113-12-CR-B

- Same as S-0113-A12-B but with Cerama cartridges

S-0113-BJ

- Single hole deck-mount mixing faucet
- 44" flexible hose with heat resistant handle
- 1.07 GPM spray valve (S-0107-J)
- Quarter-turn Eterna cartridges with spring checks
- Lever handles with color coded indexes
- 6" adjustable wall bracket
- 18" flexible supply hoses with G1/2 female swivel connections (Compatible with 1/2" NPSM threads)



S-0113-CR-BJ

- Same as S-0113-BJ but with Cerama cartridges

S-0113-A12-BJ

- Single hole deck-mount mixing faucet
- Add-on faucet with 12" nozzle
- 44" flexible hose with heat resistant handle
- 1.07 GPM spray valve (S-0107-J)
- Quarter-turn Eterna cartridges with spring checks
- Lever handles with color coded indexes
- 6" adjustable wall bracket
- 18" flexible supply hoses with G1/2 female swivel connections (Compatible with 1/2" NPSM threads)



S-0113-12-CR-BJ

- Same as S-0113-A12-BJ but with Cerama cartridges

STAINLESS STEEL PRE-RINSE UNITS

S-0123-A12-B

- 8" deck-mount mixing faucet
- Add-on faucet with 12" nozzle
- 44" flexible hose with heat resistant handle
- 1.15 GPM spray valve (S-0107)
- Quarter-turn Eterna cartridges with spring checks
- Lever handles with color coded indexes
- 6" adjustable wall bracket
- 1/2" NPT female inlets



S-0123-B

- 8" deck-mount mixing faucet
- 44" flexible hose with heat resistant handle
- 1.15 GPM spray valve (S-0107)
- Quarter-turn Eterna cartridges with spring checks
- Lever handles with color coded indexes
- 6" adjustable wall bracket
- 1/2" NPT female inlets



S-0123-A12-CR-B

- Same as S-0123-A12-B but with Cerama cartridges

S-0123-CR-B

- Same as S-0123-B but with Cerama cartridges

S-0123-A12-BJ

- 8" deck-mount mixing faucet
- Add-on faucet with 12" nozzle
- 44" flexible hose with heat resistant handle
- 1.07 GPM spray valve (S-0107-J)
- Quarter-turn Eterna cartridges with spring checks
- Lever handles with color coded indexes
- 6" adjustable wall bracket
- 1/2" NPT female inlets



S-0123-BJ

- 8" deck-mount mixing faucet
- 44" flexible hose with heat resistant handle
- 1.07 GPM spray valve (S-0107-J)
- Quarter-turn Eterna cartridges with spring checks
- Lever handles with color coded indexes
- 6" adjustable wall bracket
- 1/2" NPT female inlets



S-0123-A12-CR-BJ

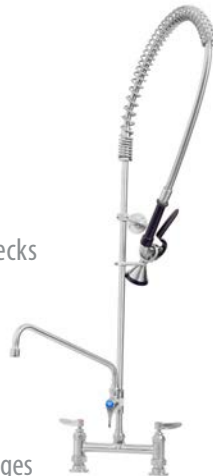
- Same as S-0123-A12-BJ but with Cerama cartridges

S-0123-CR-BJ

- Same as S-0123-BJ but with Cerama cartridges

S-0123-A12-BY

- 8" deck-mount mixing faucet
- Add-on faucet with 12" nozzle
- 44" flexible hose with heat resistant handle
- 1.15 GPM spray valve (S-0107-Y)
- Quarter-turn Eterna cartridges with spring checks
- Lever handles with color coded indexes
- 6" adjustable wall bracket
- 1/2" NPT female inlets



S-0123-BY

- 8" deck-mount mixing faucet
- 44" flexible hose with heat resistant handle
- 1.15 GPM spray valve (S-0107-Y)
- Quarter-turn Eterna cartridges with spring checks
- Lever handles with color coded indexes
- 6" adjustable wall bracket
- 1/2" NPT female inlets



S-0123-A12-CR-BY

- Same as S-0123-A12-BY but with Cerama cartridges

S-0123-CR-BY

- Same as S-0123-BY but with Cerama cartridges

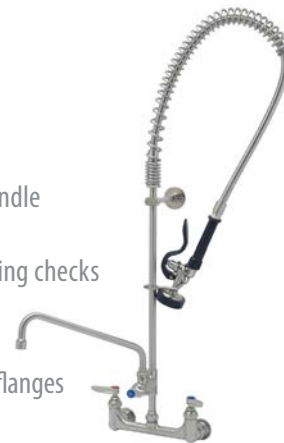
S-0133-BY

- 8" wall-mount mixing faucet
- 44" flexible hose with heat resistant handle
- 1.15 GPM spray valve (S-0107-Y)
- Quarter-turn Eterna cartridges with spring checks
- Lever handles with color coded indexes
- 6" adjustable wall bracket
- 1/2" NPT female eccentric inlets with 2" flanges



S-0133-A12-B

- 8" wall-mount mixing faucet
- Add-on faucet with 12" nozzle
- 44" flexible hose with heat resistant handle
- 1.15 GPM spray valve (S-0107)
- Quarter-turn Eterna cartridges with spring checks
- Lever handles with color coded indexes
- 6" adjustable wall bracket
- 1/2" NPT female eccentric inlets with 2" flanges



S-0133-CR-BY

- Same as S-0133-BY but with Cerama cartridges

S-0133-12-CR-B

- Same as S-0133-A12-B but with Cerama cartridges

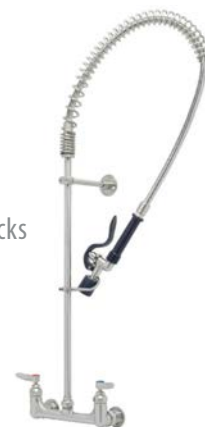
S-0133-A12-BY

- 8" wall-mount mixing faucet
- Add-on faucet with 12" nozzle
- 44" flexible hose with heat resistant handle
- 1.15 GPM spray valve (S-0107-Y)
- Quarter-turn Eterna cartridges with spring checks
- Lever handles with color coded indexes
- 6" adjustable wall bracket
- 1/2" NPT female eccentric inlets with 2" flanges



S-0133-BJ

- 8" wall-mount mixing faucet
- 44" flexible hose with heat resistant handle
- 1.07 GPM spray valve (S-0107-J)
- Quarter-turn Eterna cartridges with spring checks
- Lever handles with color coded indexes
- 6" adjustable wall bracket
- 1/2" NPT female eccentric inlets with 2" flanges



S-0133-12-CR-BY

- Same as S-0133-A12-BY but with Cerama cartridges

S-0133-CR-BJ

- Same as S-0133-BJ but with Cerama cartridges

S-0133-B

- 8" wall-mount mixing faucet
- 44" flexible hose with heat resistant handle
- 1.15 GPM spray valve (S-0107)
- Quarter-turn Eterna cartridges with spring checks
- Lever handles with color coded indexes
- 6" adjustable wall bracket
- 1/2" NPT female eccentric inlets with 2" flanges



S-0133-A12-BJ

- 8" wall-mount mixing faucet
- Add-on faucet with 12" nozzle
- 44" flexible hose with heat resistant handle
- 1.07 GPM spray valve (S-0107-J)
- Quarter-turn Eterna cartridges with spring checks
- Lever handles with color coded indexes
- 6" adjustable wall bracket
- 1/2" NPT female eccentric inlets with 2" flanges



S-0133-CR-B

- Same as S-0133-B but with Cerama cartridges

S-0133-12-CR-BJ

- Same as S-0133-A12-BJ but with Cerama cartridges

EVERSTEEL®

Designed to last

SINGLE LEVER PRE-RINSE UNITS



COMMERCIAL-DUTY
CONSTRUCTION



LIMITED LIFETIME
WARRANTY



EASY TO CLEAN



SINGLE LEVER
BASE DESIGN
NOW AVAILABLE



A NEW CLASSIC

EASY TO CLEAN

LEAD-FREE

TRUE STAINLESS STEEL

AVAILABLE WITH
AND WITHOUT
ADD-ON FAUCETS

CERAMA CARTRIDGE

Standard with temperature limit ceramic cartridge.

SINGLE LEVER DESIGN

Allows for quick control of water flow and temperature with one hand.

BRUSHED SATIN FINISH

S-2780-BY

- Single hole deck-mount single lever faucet
- 44" flexible hose with heat resistant handle
- 1.15 GPM spray valve (S-0107-Y)
- Cerama cartridge with temperature limit stop
- Single lever handle with color coded index
- 6" adjustable wall bracket
- 18" flexible supply hoses with G1/2 female swivel connections (Compatible with 1/2" NPSM threads)



S-2780-B

- Same as S-2780-BY but with 1.15 GPM spray valve (S-0107)

S-2780-BC

- Same as S-2780-BY but with 0.65 GPM low flow spray valve (S-0107-C)

S-2780-BJ

- Same as S-2780-BY but with 1.07 GPM spray valve (S-0107-J)

S-2780-A12-BY

- Single hole deck-mount single lever faucet
- Add-on faucet with 12" nozzle
- 44" flexible hose with heat resistant handle
- 1.15 GPM spray valve (S-0107-Y)
- Cerama cartridge with temperature limit stop
- Single lever handle with color coded index
- 6" adjustable wall bracket
- 18" flexible supply hoses with G1/2 female swivel connections (Compatible with 1/2" NPSM threads)



S-2780-A12-B

- Same as S-2780-A12-BY but with 1.15 GPM spray valve (S-0107)

S-2780-A12-BC

- Same as S-2780-A12-BY but with 0.65 GPM low flow spray valve (S-0107-C)

S-2780-A12-BJ

- Same as S-2780-A12-BY but with 1.07 GPM spray valve (S-0107-J)

STAINLESS STEEL LOW PROFILE PRE-RINSE UNITS

SMPF-2DLN-06

- Single hole deck-mount mixing faucet
- Add-on faucet with 6" nozzle
- 24" flexible hose with heat resistant handle
- 1.15 GPM spray valve (S-0107-Y)
- Quarter-turn Eterna cartridges with spring checks
- Lever handles with color coded indexes
- 6" adjustable wall bracket
- 18" flexible supply hoses with G1/2 female swivel connections (Compatible with 1/2" NPSM threads)



SMPK-2DLN-06

- Single hole deck-mount mixing faucet
- Add-on faucet with 6" nozzle
- 24" flexible hose with heat resistant handle
- 1.15 GPM spray valve (S-0107)
- Quarter-turn Eterna cartridges with spring checks
- Lever handles with color coded indexes
- 6" adjustable wall bracket
- 18" flexible supply hoses with G1/2 female swivel connections (Compatible with 1/2" NPSM threads)



SMPF-2DLN-06-CR

- Same as SMPF-2DLN-06 but with Cerama cartridges

SMPK-2DLN-06-CR

- Same as SMPK-2DLN-06 but with Cerama cartridges

SMPF-2DLN-08

- Single hole deck-mount mixing faucet
- Add-on faucet with 8" nozzle
- 24" flexible hose with heat resistant handle
- 1.15 GPM spray valve (S-0107-Y)
- Quarter-turn Eterna cartridges with spring checks
- Lever handles with color coded indexes
- 6" adjustable wall bracket
- 18" flexible supply hoses with G1/2 female swivel connections (Compatible with 1/2" NPSM threads)



SMPK-2DLN-08

- Single hole deck-mount mixing faucet
- Add-on faucet with 8" nozzle
- 24" flexible hose with heat resistant handle
- 1.15 GPM spray valve (S-0107)
- Quarter-turn Eterna cartridges with spring checks
- Lever handles with color coded indexes
- 6" adjustable wall bracket
- 18" flexible supply hoses with G1/2 female swivel connections (Compatible with 1/2" NPSM threads)



SMPF-2DLN-08-CR

- Same as SMPF-2DLN-06 but with Cerama cartridges

SMPK-2DLN-08-CR

- Same as SMPK-2DLN-08 but with Cerama cartridges

SMPF-8WLN-06

- 8" wall-mount mixing faucet
- Add-on faucet with 6" nozzle
- 24" flexible hose with heat resistant handle
- 1.15 GPM spray valve (S-0107-Y)
- Quarter-turn Eterna cartridges with spring checks
- Lever handles with color coded indexes
- 6" adjustable wall bracket
- 1/2" NPT female eccentric inlets with 2" flanges



SMPK-8DLN-08

- 8" deck-mount mixing faucet
- Add-on faucet with 8" nozzle
- 24" flexible hose with heat resistant handle
- 1.15 GPM spray valve (S-0107)
- Quarter-turn Eterna cartridges with spring checks
- Lever handles with color coded indexes
- 6" adjustable wall bracket
- 1/2" NPT female inlets



SMPF-8WLN-06-CR

- Same as SMPF-8WLN-06 but with Cerama cartridges

SMPK-8DLN-08-CR

- Same as SMPK-8DLN-08 but with Cerama cartridges

SMPK-8WLN-06

- 8" wall-mount mixing faucet
- Add-on faucet with 6" nozzle
- 24" flexible hose with heat resistant handle
- 1.15 GPM spray valve (S-0107)
- Quarter-turn Eterna cartridges with spring check
- Lever handles with color coded indexes
- 6" adjustable wall bracket
- 1/2" NPT female eccentric inlets with 2" flang



SMPK-8WLN-06-CR

- Same as SMPK-8WLN-06 but with Cerama cartridges

SMPK-8WLN-08

- 8" wall-mount mixing faucet
- Add-on faucet with 8" nozzle
- 24" flexible hose with heat resistant handle
- 1.15 GPM spray valve (S-0107)
- Quarter-turn Eterna cartridges with spring checks
- Lever handles with color coded indexes
- 6" adjustable wall bracket
- 1/2" NPT female eccentric inlets with 2" flanges



SMPM-2DLN-06

- Single hole deck-mount mixing faucet
- Add-on faucet with 6" nozzle
- 24" flexible hose with heat resistant handle
- 1.07 GPM spray valve (S-0107-J)
- Quarter-turn Eterna cartridges with spring checks
- Lever handles with color coded indexes
- 6" adjustable wall bracket
- 18" flexible supply hoses with G1/2 female swivel connections (Compatible with 1/2" NPSM threads)



SMPM-2DLN-06-CR

- Same as SMPM-2DLN-06 but with Cerama cartridges

SMPF-2LSN-00

- Single hole deck-mount single lever faucet
- 24" flexible hose with heat resistant handle
- 1.15 GPM spray valve (S-0107-Y)
- Cerama cartridge with temperature limit stop
- Single lever handle with color coded index
- 6" adjustable wall bracket
- 18" flexible supply hoses with G1/2 female swivel connections (Compatible with 1/2" NPSM threads)



SMPF-2LSN-06

- Same as SMPF-2LSN-00 but with add-on faucet with 6" nozzle

SMPM-2DLN-08

- Single hole deck-mount mixing faucet
- Add-on faucet with 8" nozzle
- 24" flexible hose with heat resistant handle
- 1.07 GPM spray valve (S-0107-J)
- Quarter-turn Eterna cartridges with spring checks
- Lever handles with color coded indexes
- 6" adjustable wall bracket
- 18" flexible supply hoses with G1/2 female swivel connections (Compatible with 1/2" NPSM threads)



SMPM-2DLN-08-CR

- Same as SMPM-2DLN-08 but with Cerama cartridges

SMPM-8WLN-06

- 8" wall-mount mixing faucet
- Add-on faucet with 6" nozzle
- 24" flexible hose with heat resistant handle
- 1.07 GPM spray valve (S-0107-J)
- Quarter-turn Eterna cartridges with spring checks
- Lever handles with color coded indexes
- 6" adjustable wall bracket
- 1/2" NPT female eccentric inlets with 2" flanges



SMPM-8WLN-06-CR

- Same as SMPM-8WLN-06 but with Cerama cartridges

SMPK-2LSN-00

- Single hole deck-mount single lever faucet
- 24" flexible hose with heat resistant handle
- 1.15 GPM spray valve (S-0107)
- Cerama cartridge with temperature limit stop
- Single lever handle with color coded index
- 6" adjustable wall bracket
- 18" flexible supply hoses with G1/2 female swivel connections (Compatible with 1/2" NPSM threads)



SMPK-2LSN-06

- Same as SMPK-2LSN-00 but with add-on faucet with 6" nozzle

SMPM-2LSN-00

- Single hole deck-mount single lever faucet
- 24" flexible hose with heat resistant handle
- 1.07 GPM spray valve (S-0107-J)
- Cerama cartridge with temperature limit stop
- Single lever handle with color coded index
- 6" adjustable wall bracket
- 18" flexible supply hoses with G1/2 female swivel connections (Compatible with 1/2" NPSM threads)



SMPM-2LSN-06

- Same as SMPM-2LSN-00 but with add-on faucet with 6" nozzle

SMPY-2LSN-00

- Single hole deck-mount single lever faucet
- 24" flexible hose with heat resistant handle
- 0.65 GPM low flow spray valve (S-0107-C)
- Cerama cartridge with temperature limit stop
- Single lever handle with color coded index
- 6" adjustable wall bracket
- 18" flexible supply hoses with G1/2 female swivel connections (Compatible with 1/2" NPSM threads)



SMPY-2LSN-06

- Same as SMPY-2LSN-00 but with add-on faucet with 6" nozzle

S-0107-Y

- 1.15 GPM spray valve
- Blue rubber integrated spray face with bumper and handle
- Hold-down ring
- 3/4-14 UN male inlet fitting



S012394-30NS

- Quarter-turn Cerama cartridge with check valve to prevent cross flow of water
- Right-to-close
- Fits all EverSteel® faucets



S-0107

- 1.15 GPM spray valve
- Blue rubber bumper and handle
- Hold-down ring
- 3/4-14 UN male inlet fitting



S012446-30NS

- Quarter-turn Cerama cartridge with check valve to prevent cross flow of water
- Right-to-close
- Lever handle with red index and screw
- Fits all EverSteel® faucets



S-0107-J

- 1.07 GPM spray valve
- Blue rubber bumper and handle
- Hold-down ring
- 3/4-14 UN male inlet fitting



S012447-30NS

- Same as S012446-30NS but left-to-close and blue index



S-0155-LNEZ

- Add-on faucet less nozzle
- EasyInstall quick installation inlet
- Quarter-turn Eterna cartridge with spring check
- Swivel outlet accepts T&S swing nozzles
- 3/8" NPT female outlet



S021020-30

- Single lever handle with temperature index, set screw and hex wrench



S-0155-CR-LNEZ

- Same as S-0155-LNEZ but with Cerama cartridge

S021021-30

- Single lever faucet trim ring



S-0970-FEZ

- 3/8" continuous pressure dual check vacuum breaker
- EasyInstall quick installation inlet for T&S swivel outlet faucets
- 3/8" NPT female swivel inlet and outlet
- Lock washer for rigid conversion included



S021022-20

- Single lever faucet locking nut



013111-45

- Cerama cartridge for use with single lever models



S059X

- 6" swing nozzle with stream regulator outlet
- Fits all T&S swivel outlet faucets



S060X

- 8" swing nozzle with stream regulator outlet
- Fits all T&S swivel outlet faucets



S062X

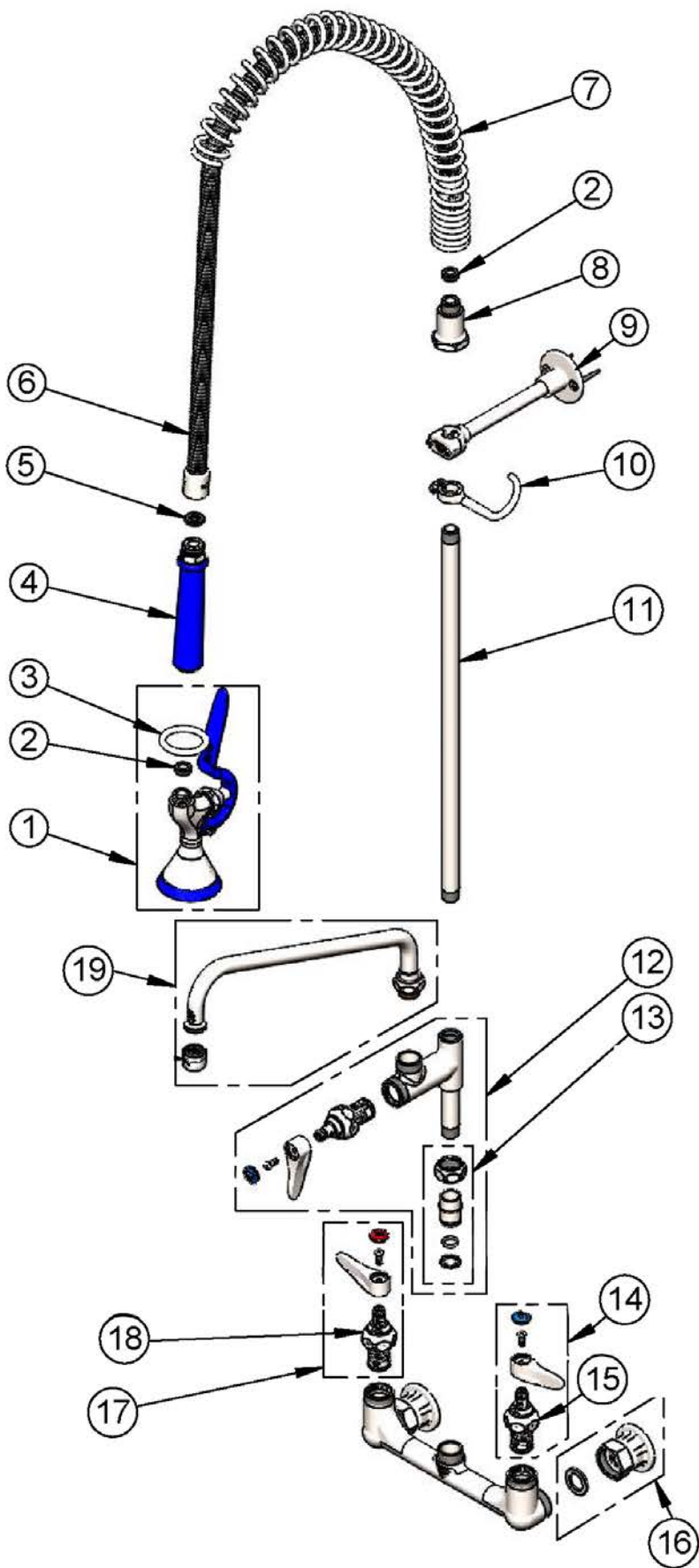
- 12" swing nozzle with stream regulator outlet
- Fits all T&S swivel outlet faucets



S133X

- 5 3/4" swivel gooseneck
- S-PT stream regulator outlet
- Fits all T&S swivel outlet faucets





ITEM NO.	SALES NO.	DESCRIPTION
1	S-0107-Y	1.15 GPM Spray Valve (Blue)
2	010476-45	#27 Washer
3	S000907-30	Stainless Steel Spray Valve Hold-Down Ring
4	S020795-30	Stainless Steel Grip Handle (Blue)
5	001014-45	Washer, Hose Barrel
6	S-0044-H2A	44" Flexible Stainless Steel Hose, Less Handle
7	S000888-30	Stainless Steel EasyInstall Overhead Spring
8	S000821-30	Stainless Steel Spring Body
9	S-0109-01	Stainless Steel 6" Wall Bracket
10	S004R	Stainless Steel Finger Hook
11	S000369-30	Stainless Steel 3/8" NPT x 18" Riser
12	S-0155-LNEZ	Stainless Steel EasyInstall Add-On Faucet with Quarter-Turn Eterna Cartridge & Lever Handle, Less Nozzle
13	SEZ-K	Stainless Steel EasyInstall Kit: Nut, Bushing, O-Ring and Lock Washer
14	S002711-30NS	Stainless Steel Quarter-Turn Eterna Cartridge with Spring Check, Handle, Blue Index and Screw, LTC
15	S012442-30NS	Stainless Steel Quarter-Turn Eterna Cartridge, LTC with Spring Check
16	S00AA	Stainless Steel 1/2" NPT Female Eccentric Flange
17	S002712-30NS	Stainless Steel Quarter-Turn Eterna Cartridge with Spring Check, Handle, Red Index and Screw, RTC
18	S012443-30NS	Stainless Steel Quarter-Turn Eterna Cartridge with Spring Check, RTC
19	S062X	Stainless Steel 12" Swing Nozzle with Stream Regulator Outlet

S-0113-U12-B

- Single hole deck-mount mixing faucet
- 44" flexible hose with heat resistant handle
- 1.15 GPM spray valve (S-0107)
- Add-on faucet with 12" nozzle, includes 10" ULTRARINSE® multi-tip spray arm
- Quarter-turn Eterna cartridges with spring checks
- Lever handles with color coded indexes
- 6" adjustable wall bracket
- 18" flexible supply hoses with G1/2 female swivel connections (Compatible with 1/2" NPSM threads)



S-0113-U12-CR-B

- Same as S-0113-U12-B but with Cerama cartridges

S-0133-U12-B

- 8" wall-mount mixing faucet
- 44" flexible hose with heat resistant handle
- 1.15 GPM spray valve (S-0107)
- Add-on faucet with 12" nozzle, includes 10" ULTRARINSE® multi-tip spray arm
- Quarter-turn Eterna cartridges with spring checks
- Lever handles with color coded indexes
- 6" adjustable wall bracket

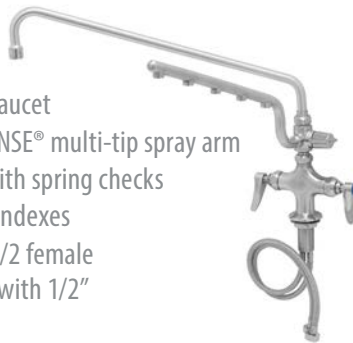


S-0133-U12-CR-B

- Same as S-0133-U12-B but with Cerama cartridges

S-0200-U18

- Single hole deck-mount mixing faucet
- 18" nozzle, includes 16" ULTRARINSE® multi-tip spray arm
- Quarter-turn Eterna cartridges with spring checks
- Lever handles with color coded indexes
- 18" flexible supply hoses with G1/2 female swivel connections (Compatible with 1/2" NPSM threads)

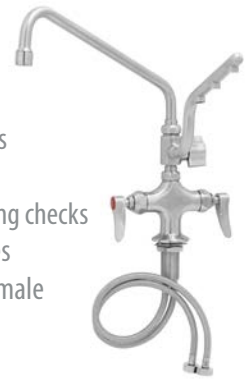


S-0200-U18-CR

- Same as S-0200-U18 but with Cerama cartridges

S-0201-U12

- Single hole deck-mount mixing faucet
- Add-on faucet with 12" nozzle, includes 10" ULTRARINSE® multi-tip spray arm
- Quarter-turn Eterna cartridges with spring checks
- Lever handles with color coded indexes
- 18" flexible supply hoses with G1/2 female swivel connections



S-0230-U18

- 8" wall-mount mixing faucet
- 18" nozzle, includes 16" ULTRARINSE® multi-tip spray arm
- Quarter-turn Eterna cartridges with spring checks
- Lever handles with color coded indexes
- 1/2" NPT female eccentric inlets with Ø 2" flanges



S-0230-U18-CR

- Same as S-0230-U18 but with Cerama cartridges

S-0231-U12

- 8" wall-mount mixing faucet
- Adjustable centers from 7 3/4" to 8 1/4"
- 12" swing nozzle, includes 10" ULTRARINSE® multi-tip spray arm
- Quarter-turn Eterna cartridges with spring checks
- Lever handles with color coded indexes
- 1/2" NPT female eccentric inlets with Ø 2" flanges



S-0231-U12-CR

- Same as S-0231-U12 but with Cerama cartridges

S-U12-KIT

- 10" 1.5 GPM multiple tip spray arm
- Switches between spray arm and swing nozzle
- For use with any stainless steel swivel T&S outlet faucet or stainless steel swing nozzle



S-U18-KIT

- Same as S-U12-KIT but with 16" 1.5 GPM multiple tip spray arm

EVERSTEEL®

Designed to last

FAUCETS



COMMERCIAL-DUTY
CONSTRUCTION



LIMITED LIFETIME
WARRANTY



EASY TO CLEAN



NOW AVAILABLE
WITH CERAMA
CARTRIDGES



A NEW CLASSIC

VARIETY OF
NOZZLE SIZES

LEAD-FREE

INTERLOCKING
SPLINES

QUARTER-TURN
CARTRIDGES

BRUSHED SATIN FINISH

OUTLET DEVICE OPTIONS

TRUE STAINLESS STEEL

PROVEN T&S DESIGN

S-1110

- 4" deck-mount mixing faucet
- 6" swing nozzle
- Lever handles with color coded indexes
- Quarter-turn Eterna cartridges with spring checks
- 1/2" NPT male inlets
- Lock washer provided for rigid application



S-1115

- 4" wall-mount mixing faucet
- 6" swing nozzle
- Lever handles with color coded indexes
- Quarter-turn Eterna cartridges with spring checks
- 1/2" NPT male inlets
- Lock washer provided for rigid application



S-1110-CR

- Same as S-1110 but with Cerama cartridges

S-1115-CR

- Same as S-1115 but with Cerama cartridges

S-1110-LN

- 4" deck-mount mixing faucet with swivel outlet less nozzle
- Lever handles with color coded indexes
- Quarter-turn Eterna cartridges with spring checks
- 1/2" NPT male inlets
- Swivel outlet accepts T&S EverSteel® swing nozzles
- Lock washer provided for rigid application



S-1115-LN

- 4" deck-mount mixing faucet with swivel outlet less nozzle
- Lever handles with color coded indexes
- Quarter-turn Eterna cartridges with spring checks
- 1/2" NPT male inlets
- Swivel outlet accepts T&S EverSteel® swing nozzles
- Lock washer provided for rigid application



S-1110-CR-LN

- Same as S-1110 -LN but with Cerama cartridges

S-1115-CR-LN

- Same as S-1115-LN but with Cerama cartridges

S-1120-LN

- 8" deck-mount mixing faucet with swivel outlet less nozzle
- Lever handles with color coded indexes
- Quarter-turn Eterna cartridges with spring checks
- 1/2" NPT male inlets
- Lock washer provided for rigid application



S-1120-CR-LN

- Same as S-1120-LN but with Cerama cartridges

S-1125-LN

- 8" wall-mount mixing faucet with swivel outlet less nozzle
- Lever handles with color coded indexes
- Quarter-turn Eterna cartridges with spring checks
- 1/2" NPT male inlets
- Lock washer provided for rigid application



S-1125-CR-LN

- Same as S-1125-LN but with Cerama cartridges

S-1141

- 4" deck-mount mixing faucet
- Lever handles with color coded indexes
- 5 3/4" swivel gooseneck
- Quarter-turn Eterna cartridges with spring checks
- 1/2" NPT male inlets
- Lock washer provided for rigid application



S-1141-CR

- Same as S-1141 but with Cerama cartridges

S-1141-04

- 4" deck-mount mixing faucet
- 4" wrist action handles with color coded indexes
- 5 3/4" swivel gooseneck
- Quarter-turn Eterna cartridges with spring checks
- 1/2" NPT male inlets
- Lock washer provided for rigid application



S-1141-04-CR

- Same as S-1141-04 but with Cerama cartridges

S-1142

- 8" deck-mount mixing faucet
- Lever handles with color coded indexes
- 5 3/4" swivel gooseneck
- Quarter-turn Eterna cartridges with spring checks
- 1/2" NPT male inlets
- Lock washer provided for rigid application



S-1142-CR

- Same as S-1142 but with Cerama cartridges

S-1142-04

- 8" deck-mount mixing faucet
- 4" wrist action handles with color coded indexes
- 5 3/4" swivel gooseneck
- Quarter-turn Eterna cartridges with spring checks
- 1/2" NPT male inlets
- Lock washer provided for rigid application



S-1142-04-CR

- Same as S-1142-04 but with Cerama cartridges

S-1146

- 4" wall-mount mixing faucets
- Lever handles with color coded indexes
- 5 3/4" swivel gooseneck
- Quarter-turn Eterna cartridges with spring checks
- 1/2" NPT male inlets
- Lock washer provided for rigid application



S-1146-CR

- Same as S-1146 but with Cerama cartridges

S-1146-04

- 4" wall-mount mixing faucet
- 4" wrist action handles with color coded indexes
- 5 3/4" swivel gooseneck
- Quarter-turn Eterna cartridges with spring checks
- 1/2" NPT male inlets
- Lock washer provided for rigid application



S-1146-04-CR

- Same as S-1146-04 but with Cerama cartridges

STAINLESS STEEL PANTRY FAUCETS

S-2785-LN

- Single hole deck-mount single lever faucet with swivel outlet less nozzle
- Lock washer provided for rigid application
- Swivel outlet accepts T&S EverSteel® swing nozzles
- Cerama cartridge with temperature limit stop
- 18" flexible stainless steel supply hoses with G1/2 female swivel connections



S-2785-S133X

- Single hole deck-mount single lever faucet
- 5 3/4" swivel gooseneck
- Lock washer provided for rigid application
- Cerama cartridge with temperature limit stop
- 18" flexible stainless steel supply hoses with G1/2 female swivel connections



S-2785-S059X

- Single hole deck-mount single lever faucet
- 6" swing nozzle
- Lock washer provided for rigid application
- Cerama cartridge with temperature limit stop
- 18" flexible stainless steel supply hoses with G1/2 female swivel connections



S-1147

- 8" wall-mount mixing faucet
- 5 3/4" swivel gooseneck
- Quarter-turn Eterna cartridges with spring checks
- 1/2" NPT male inlets
- Lock washer provided for rigid application



S-1147-CR

- Same as S-1147 but with Cerama cartridges

S-2785-S060X

- Single hole deck-mount single lever faucet
- 8" swing nozzle
- Lock washer provided for rigid application
- Cerama cartridge with temperature limit stop
- 18" flexible stainless steel supply hoses with G1/2 female swivel connections



S-0200-LN

- Single hole deck-mount mixing faucet
- Lever handles with color coded indexes
- 18" flexible supply hoses with G1/2 female swivel connections (Compatible with 1/2" NPSM threads)
- Quarter-turn Eterna cartridges with spring checks
- Lock washer provided for rigid application



S-0200-CR-LN

- Same as S-0200-LN but with Cerama cartridges

S-2785-S062X

- Single hole deck-mount single lever faucet
- 12" swing nozzle
- Lock washer provided for rigid application
- Cerama cartridge with temperature limit stop
- 18" flexible stainless steel supply hoses with G1/2 female swivel connections



S-0205-LN

- Single hole single temperature deck-mount faucet with swivel outlet less nozzle
- Lever handle with blue color coded index
- 1/2" NPSM male inlet with 2" flange
- Swivel outlet accepts T&S EverSteel® swing nozzles
- Quarter-turn Eterna cartridges with spring check
- Lock washer provided for rigid application



S-0205-CR-LN

- Same as S-0205-LN but with Cerama cartridge

S-0210-LN

- Single hole single temperature wall-mount faucet with swivel outlet less nozzle
- 4-arm handle with blue index
- 1/2" NPT female inlet with 2" flange
- Quarter-turn Eterna cartridge with spring check
- Swivel outlet accepts standard T&S stainless steel nozzles
- Lock washer provided for rigid application



S-0210-LN-CR

- Same as S-0210-LN but with Cerama cartridge

S-0212

- Single hole single temperature wall-mount faucet
- 6" swing nozzle
- 4-arm handle with blue index
- 1/2" NPT female inlet with 2" flange
- Quarter-turn Eterna cartridges with spring check
- Lock washer provided for rigid application



S-0212-CR

- Same as S-0212 but with Cerama cartridge

S-0221

- 8" deck-mount faucet
- 12" swing nozzle
- Lever handles with color coded indexes
- 1/2" NPT female inlets
- Quarter-turn Eterna cartridges with spring check
- Lock washer provided for rigid application



S-0221-CR

- Same as S-0221 but with Cerama cartridge

S-0220-LN

- 8" deck-mount mixing faucet with swivel outlet less nozzle
- Lever handles with color coded indexes
- Quarter-turn Eterna cartridges with spring checks
- 1/2" NPT female inlets
- Swivel outlet accepts EverSteel® swing nozzles
- Lock washer provided for rigid application



S-0220-CR-LN

- Same as S-0220-LN but with Cerama cartridges

S-0221-WH4

- 8" deck-mount faucet
- 12" swing nozzle
- Wrist action handles with color coded indexes
- 1/2" NPT female inlets
- Quarter-turn Eterna cartridges with spring check
- Lock washer provided for rigid application



S-0221-CR-WH4

- Same as S-0221-WH4 but with Cerama cartridge

S-0230-LN

- 8" wall-mount mixing faucet with swivel outlet less nozzle
- Lever handles with color coded indexes
- Quarter-turn Eterna cartridges with spring checks
- 1/2" NPT female eccentric inlets with 2" flanges
- Swivel outlet accepts EverSteel® swing nozzles
- Lock washer provided for rigid application
- Adjustable centers from 7 3/4" to 8 1/4"



S-0230-CR-LN

- Same as S-0230-LN but with Cerama cartridges

S-0231

- 8" wall-mount mixing faucet
- Lever handles with color coded indexes
- 12" swing nozzle
- Quarter-turn Eterna cartridges with spring checks
- 1/2" NPT female eccentric inlets with 2" flanges
- Lock washer provided for rigid application
- Adjustable centers from 7 3/4" to 8 1/4"



S-0231-CR

- Same as S-0231 but with Cerama cartridges

S-0207

- Single hole single temperature deck-mount faucet
- Lever handle with color coded index
- 6" swing nozzle
- 1/2" NPSM male inlet with 2" flange
- Quarter-turn Eterna cartridge with spring check
- Lock washer provided for rigid application



S-0207-CR

- Same as S-0207 but with Cerama cartridge

STAINLESS STEEL PANTRY FAUCETS

S-0300

- Single hole deck-mount mixing faucet
- Lever handles with color coded indexes
- 5 3/4" swivel gooseneck
- 18" flexible supply hoses with G1/2 female swivel connections
- Stream regulator outlet
- Quarter-turn Eterna cartridges with spring checks
- Lock washer provided for rigid application



S-0300-CR

- Same as S-0300 but with Cerama cartridge

S-0305

- Single hole single temperature deck-mount faucet
- Lever handle with blue index
- 5 3/4" swivel gooseneck
- 1/2" NPSM male inlet with 2" flange
- Stream regulator outlet
- Quarter-turn Eterna cartridge with spring check
- Lock washer provided for rigid application



S-0305-CR

- Same as S-0305 but with Cerama cartridge

S-0310

- Single hole single temperature deck-mount faucet
- 4-arm handle with blue index
- 5 3/4" swivel/rigid gooseneck
- 1/2" NPT female inlet with 2" flange
- Stream regulator outlet
- Quarter-turn Eterna cartridge with spring check
- Lock washer provided for rigid application



S-0310-CR

- Same as S-0310 but with Cerama cartridge

S-0320

- 8" deck-mount faucet
- Lever handles with color coded indexes
- 5 3/4" swivel/rigid gooseneck
- 1/2" NPT female inlets
- Stream regulator outlet
- Quarter-turn Eterna cartridges with spring checks
- Lock washer provided for rigid application



S-0320-CR

- Same as S-0320 but with Cerama cartridge

S059X

- 6" swing nozzle with stream regulator outlet
- Fits all T&S EverSteel® swivel outlet faucets



S021020-30

- Single lever handle with temperature index, set screw and hex wrench



S060X

- 8" swing nozzle with stream regulator outlet
- Fits all T&S EverSteel® swivel outlet faucets



S021021-30

- Single lever faucet trim ring



S062X

- 12" swing nozzle with stream regulator outlet
- Fits all T&S EverSteel® swivel outlet faucets



S021022-20

- Single lever faucet locking nut



S133X

- 5 3/4" swivel gooseneck
- S-PT stream regulator outlet
- Fits all T&S EverSteel® swivel outlet faucets



S-0230-K

- Elbow kit
- (2) 1/2" NPT stainless steel supply nipples with lock nuts and washers
- (2) Short stainless steel elbows with 1/2" NPT male inlet and 1/2" NPT female outlet



S012394-30NS

- Quarter-turn Cerama cartridge with check valve to prevent cross flow of water
- Right-to-close
- Fits all EverSteel® faucets



S-0425

- 1/2" NPT x 2" stainless steel inlet supply nipple
- 1/2" stainless steel lock nut
- 1/2" stainless steel lock washer



S012395-30NS

- Same as S012394-30NS but left-to-close

S012446-30NS

- Quarter-turn Cerama cartridge with check valve to prevent cross flow of water
- Right-to-close
- Lever handle with red index and screw
- Fits all EverSteel® faucets



S-0425-M

- (2) 1/2" NPT x 2" stainless steel inlet supply nipple
- (2) 1/2" stainless steel lock nut
- (2) 1/2" stainless steel lock washer



S012447-30NS

- Same as S012446-30NS but left-to-close and blue index



013111-45

- Cerama cartridge for use with single lever models





EVERSTEEL®

EverSteel® Laboratory Faucets

Superior Durability:

Crafted from top-grade stainless steel, these faucets are designed to withstand the rigorous demands of laboratory environments, resisting corrosion and wear.

Ideal for Pure Water Applications:

Stainless steel faucets eliminate the need for specialized non-metallic faucets and the Tin-lining of traditional brass faucets.

Limited Lifetime Warranty:

Backed by T&S's limited lifetime warranty, you can trust that our laboratory faucets will deliver long-lasting performance and peace of mind.

EVERSTEEL[®]

Designed to last



LABORATORY FAUCETS

STAINLESS STEEL FAUCETS

Eliminate the need for specialized non-metallic faucets and the tin-lining of traditional brass faucets

OUTLET STYLES

Serrated tip or aerators

MULTIPLE BODY STYLES AVAILABLE

Deck and Wall Mount
Single and Dual Temperature



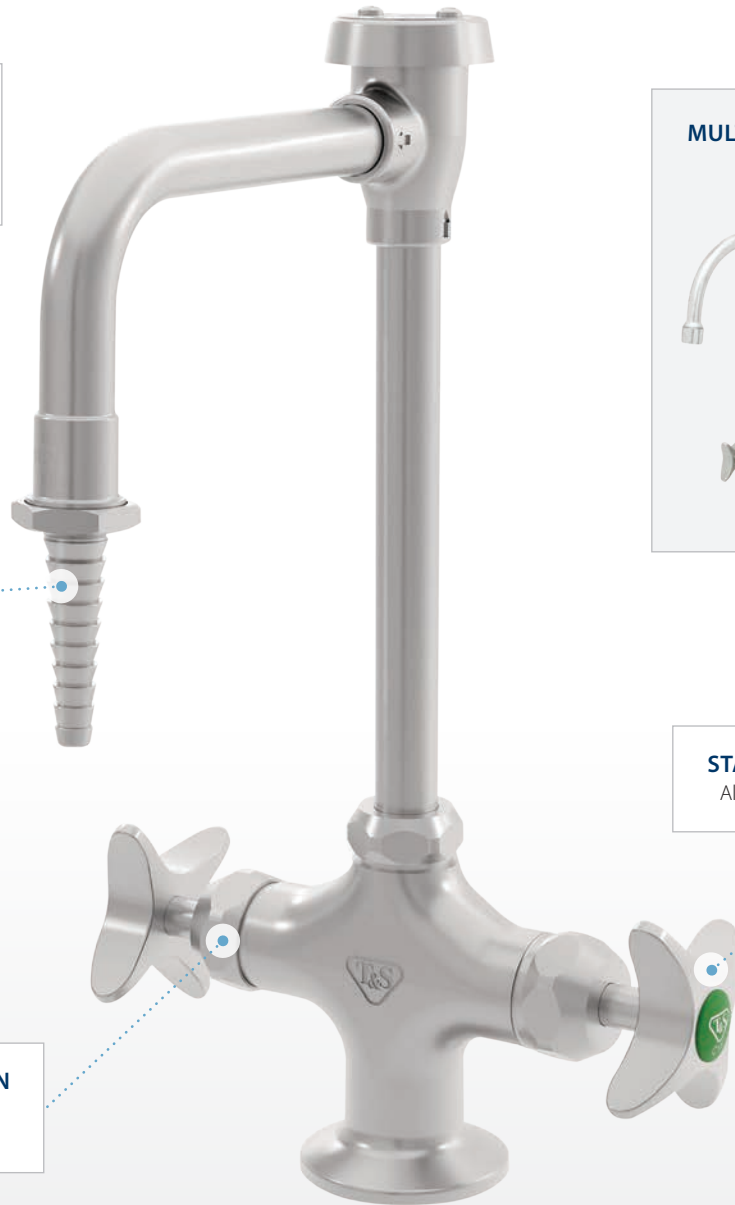
STAINLESS STEEL 4-ARM HANDLES

Also available with 4" wrist action handles

STAINLESS STEEL QUARTER-TURN CERAMA CARTRIDGES

Check valves prevent water cross flow

FLEXIBLE STAINLESS SUPPLY HOSES



COMMERCIAL-DUTY CONSTRUCTION

Time-proven designs in premium stainless steel



LIMITED LIFETIME WARRANTY

Protects against defects in materials or workmanship



VERSATILE PERFORMANCE

20 - 125 psi [1.38 - 8.62 bar], 40°F - 140°F [4.44°C - 60°C]



STANDARDS COMPLIANCE

ASME A112.18.1/CSA B125.1, ADA
ANSI/ICC A117.1 & NSF 372



HIGH EFFICIENCY MODELS AVAILABLE

Flow Rate: 0.5 GPM
[1.89 L/min] @ 60 psi [4.14 bar]

STAINLESS STEEL DECK-MOUNT LABORATORY FAUCETS

SL-5700-01CR

- Single hole stainless steel deck mount laboratory mixing faucet
- (2) 19" flexible stainless steel tin lined supply hoses with 3/8" compression fittings
- Swivel gooseneck with stainless steel serrated hose tip (S-0198)
- Stainless steel quarter-turn Cerama cartridges with check valves
- Stainless steel 4-arm handles
- Lock washer provided for rigid application



SL-5700-01CRWH4

- Same as SL-5700-01CR except with 4" wrist action handles

SL-5700-04CR

- Single hole stainless steel deck mount laboratory mixing faucet
- (2) 19" flexible stainless steel tin lined supply hoses with 3/8" compression fittings
- Stainless steel 5 3/4" swivel gooseneck with 2.2 GPM stainless steel aerator (S-0199-01)
- Stainless steel quarter-turn Cerama cartridges with check valves
- Stainless steel 4-arm handles
- Lock washer provided for rigid application



SL-5700-04CRWH4

- Same as SL-5700-04CR except with 4" wrist action handles

SL-5700-08CR

- Single hole stainless steel deck mount laboratory mixing faucet
- (2) 19" flexible stainless steel tin lined supply hoses with 3/8" compression fittings
- Stainless steel swivel vacuum breaker nozzle with serrated tip outlet with 0.5 GPM flow control and washer (S-0198-FD05)
- Stainless steel quarter-turn Cerama cartridges with check valves
- Stainless steel 4-arm handles
- Lock washer provided for rigid application



SL-5700-08CRWH4

- Same as SL-5700-08CR except with 4" wrist action handles

SL-5705-01CR

- Single hole stainless steel single temperature deck mount laboratory faucet
- 24" flexible stainless steel supply hose with 3/8" compression fittings
- Swivel gooseneck with stainless steel serrated hose tip (S-0198)
- Stainless steel quarter-turn Cerama cartridge with check valve
- Stainless steel 4-arm handle
- Lock washer provided for rigid application



SL-5705-01CRWH4

- Same as SL-5705-01CR except with 4" wrist action handle

SL-5705-04CR

- Single hole stainless steel single temperature deck mount laboratory faucet
- 24" flexible stainless steel supply hose with 3/8" compression fittings
- Stainless steel 5 3/4" swivel gooseneck with 2.2 GPM stainless steel aerator (S-0199-01)
- Stainless steel quarter-turn Cerama cartridge with check valve
- Stainless steel 4-arm handle
- Lock washer provided for rigid application



SL-5705-04CRWH4

- Same as SL-5705-04CR except with 4" wrist action handle

SL-5705-08CR

- Single hole stainless steel single temperature deck mount laboratory faucet
- 24" flexible stainless steel supply hose with 3/8" compression fittings
- Stainless steel swivel vacuum breaker nozzle with serrated tip outlet with 0.5 GPM flow control and washer (S-0198-FD05)
- Stainless steel quarter-turn Cerama cartridge with check valve
- Stainless steel 4-arm handle
- Lock washer provided for rigid application



SL-5705-08CRWH4

- Same as SL-5705-08CR except with 4" wrist action handle

STAINLESS STEEL LABORATORY FAUCET PARTS



PART NUMBER	PART DESCRIPTION
017420-45TL	Tin-Lined 24" Flex SS Supply Hose, 3/8" Compression (9/16-24UN) Female x 1/2" NPSM Female
019969-45TL	Tin-Lined 19" Flex SS Supply Hoses, 3/8" Compression Female Swivel Inlet, M10x1.0 Connection (Qty2)
S-0198	Outlet, Stainless Steel Serrated Tip / Hose End, 3/8" NPT Male Inlet (Washer Included)
S-0198-FD05	Stainless Steel Serrated Hose End with 0.5 GPM Flow Disc
S-0198-FD10	Stainless Steel Serrated Hose End with 1.0 GPM Flow Disc
S-0198-FD12	Stainless Steel Serrated Hose End with 1.2 GPM Flow Disc
S-0198-FD15	Stainless Steel Serrated Hose End with 1.5 GPM Flow Disc
S-0198-FD22	Stainless Steel Serrated Hose End with 2.2 GPM Flow Disc
S-0968	Stainless Steel Vacuum Breaker, 3/8" NPT Inlet & Outlet, Atmospheric
S000422-20	Stainless Steel Supply Nipple, 1/2" x 2" Long, 1/2" NPT/NPSL x 2" Long
S002521-30NS	4-Arm (Cross-Arm) Kitchen/Lab Handle, Stainless Steel (New Style)
SL-5500-09	Supply Nipple Kit, 1/2" x 2", Stainless Steel



A HISTORY OF EXCELLENCE

T&S Brass and Bronze Works has built a reputation for quality, service and innovation for over 75 years –beginning with our original pre-rinse unit, the market’s very first. Today, our products have become the standard for many U.S. hospitals, schools, restaurants, supermarkets and public facilities.

T&S products are highly acclaimed throughout the industry for being well-built, long-lasting and reliable. Rigorous testing and a focus on interchangeability have helped set T&S apart from the competition.

T&S BRASS AND BRONZE WORKS, INC.

2 Saddleback Cove • P.O. Box 1088 • Travelers Rest, SC 29690

U.S. Toll-free 800-476-4103 • +1 864-834-4102 • *Fax* 800-868-0084

E-mail customerservice@tsbrass.com

Canada Toll-free +1 888-288-0432

