



**Limited Lifetime Warranty
(Commercial Applications)**

T&S warrants to the original purchaser (other than for purposes of resale) that such product is free from defects in material and workmanship for its limited lifetime. During this warranty period, if the product is found to be defective, T&S shall, at its options, repair and/or replace it. To obtain warranty service, products must be returned to...

*T&S Brass and Bronze Works, Inc.
Attn: Warranty Repair Department
2 Saddleback Cove
Travelers Rest, SC 29690*

Shipping, freight, insurance, and other transportation charges of the product to T&S and the return of repaired or replaced product to the purchaser are the responsibility of the purchaser. Repair and/or replacement shall be made within a reasonable time after receipt by T&S of the returned product. This warranty does not cover items which have received secondary finishing or have been altered or modified after purchase, or for defects caused by physical abuse to or misuse of the product, or shipment of the products.

Any express warranty not provided herein, and any remedy for Breach of Contract which might arise, is hereby excluded and disclaimed. Any implied warranties of merchantability or fitness for a particular purpose are limited in duration to the warranty period provided on the product. Under no circumstances shall T&S be liable for loss of use or any special consequential costs, expenses or damages.

Some states do not allow limitations on how long and implied warranty lasts or the exclusion or limitation of incidental or consequential damages, so the above limitations or exclusions may not apply to you. Specific rights under this warranty and other rights vary from state to state.

Attention California Residents:

⚠ WARNING This product can expose you to chemicals including Lead, Chromium (hexavalent compounds) and Phthalates (DEHP) which are known to the State of California to cause cancer and birth defects or other reproductive harm.

For more information go to
www.P65Warnings.ca.gov.

P/N: 098-005241-45ES Rev.2
DATE: 12-04-24
DRAWN: TED
CHECKED: JMD 12-17-24
APPROVED: JHB 12-19-24

Installation and Maintenance Instructions



STAINLESS STEEL SINGLE HOLE DECK-MOUNT BASE FAUCET S-0200 / S-0300 Series, & SL-5700 Lab Series



Español:

Instrucciones de instalación y mantenimiento



Français:

Instructions pour l'installation et la maintenance



Deutsch:

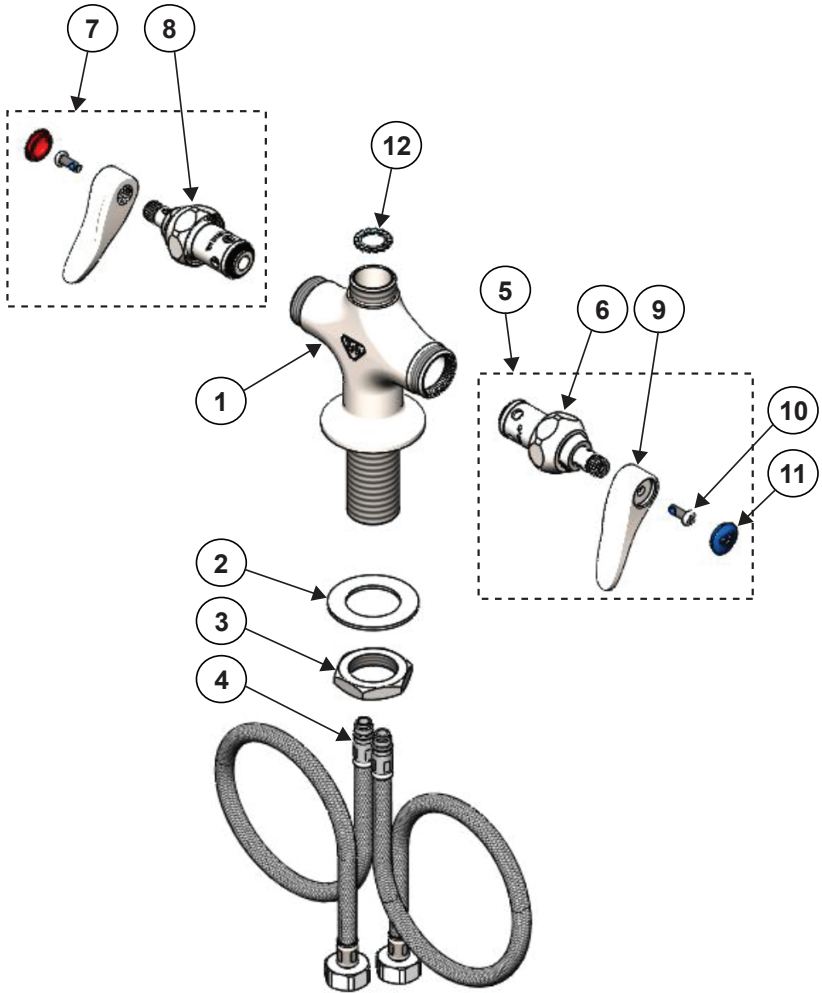
Installations- und Wartungsanleitungen



中文:

安装与维护说明

Exploded View

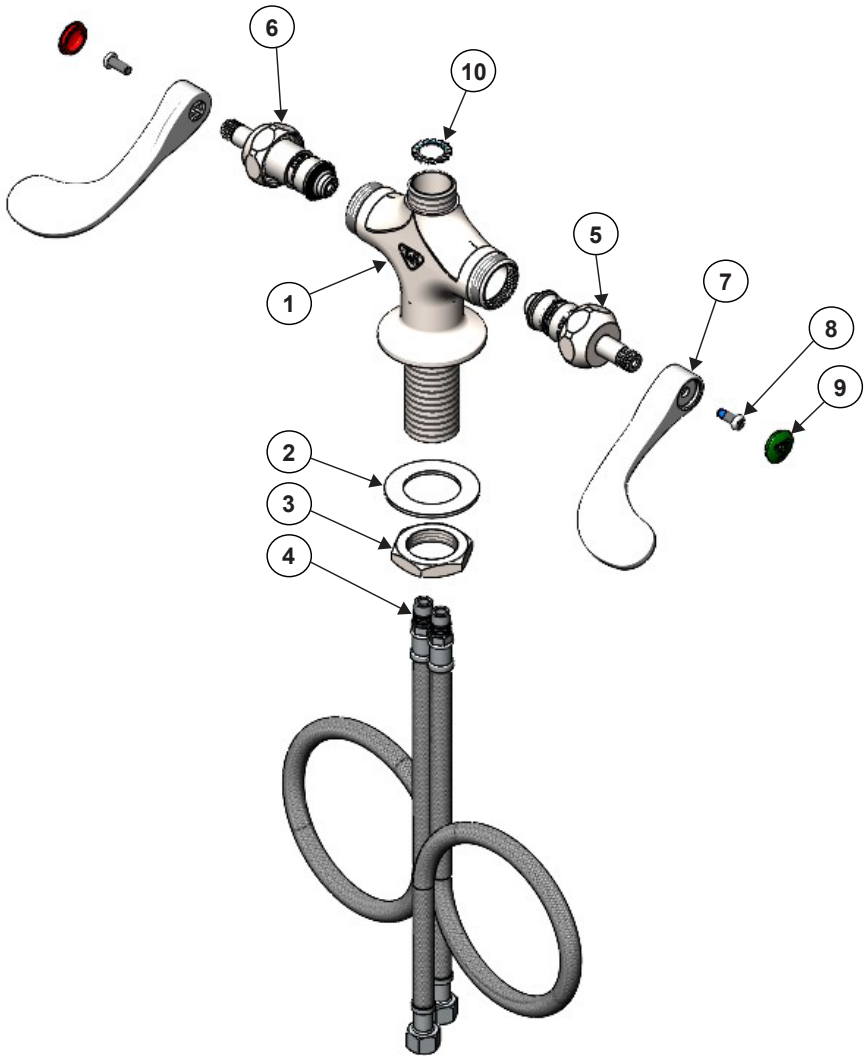


Part Number Guide

Stainless Steel Base Faucet Assembly

1	Base Faucet	N/A
2	Washer, Body	S007365-20
3	Locknut, Shank	S000965-20
4	Flexible Supply Hoses (2)	012436-45DR
5	Asm, Quarter-Turn Eterna Cartridge, LTC (new style)	S002711-30NS
	Asm, Quarter-Turn Cerama Cartridge, LTC (new style)	S012447-30NS
6	Cartridge Only, Eterna w/ Spring Check, LTC	S012442-30NS
	Cartridge Only, Cerama w/ Check Valve, LTC	S012395-30NS
7	Asm, Quarter-Turn Eterna Cartridge, RTC (new style)	S002712-30NS
	Asm, Quarter-Turn Cerama Cartridge, RTC (new style)	S012446-30NS
8	Cartridge Only, Eterna w/ Spring Check, RTC	S012443-30NS
	Cartridge Only, Cerama w/ Check Valve, RTC	S012394-30NS
9	Handle, Lever	S001638-30NS
	Handle, Wrist Action	S-WH4-NS
10	Screw, Handle	000925-45
11	Index, Button	<i>noted below</i>
	Cold (Blue)	018506-19NS
	Hot (Red)	001193-19NS
12	Star Washer, Anti-Rotation	014200-45

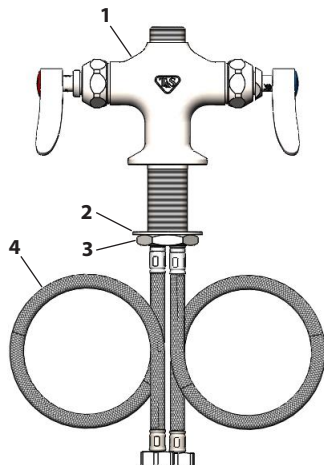
Exploded View



Laboratory Part Number Guide

Stainless Steel Base Faucet Assembly

1	Base Faucet	N/A
2	Washer, Body	S007365-20
3	Locknut, Shank	S000965-20
4	Flexible Supply Hoses, Tin-Lined (2)	019969-45TL
5	Cartridge Only, Cerama w/ Check Valve, LTC	S012395-30NS
6	Cartridge Only, Cerama w/ Check Valve, RTC	S012394-30NS
7	Handle, 4-Arm (Requires 2 RTC Cartridges)	S002521-30NS
	Handle, Wrist Action	S-WH4-NS
8	Screw, Handle	000925-45
9	Index, Button	<i>noted below</i>
	Cold (Green)	001191-45NS
	Hot (Red)	001193-19NS
10	Star Washer, Anti-Rotation	014200-45



EN Faucet Installation:

1. Shut off water supply and drain lines. Drill a hole approximately 1-1/2" diameter in countertop where you are installing no.1.
2. Remove no.3 and no.2 from no.1.
3. Place no.1 through hole in sink, align hot and cold sides parallel to sink line.
4. Install no.2 and no.3 on no.1, tighten no.3.
5. Install no.4 into threaded holes of no.3. Tighten by hand.
6. Connect supply lines and check for leaks.

ES Instalación de la canilla:

1. Cierre el suministro de agua y líneas de drenaje. Perfore un agujero de aproximadamente 3,81 cm de diámetro en el mostrador donde va a instalar el no. 1.
2. Remueva el No. 3 y el No. 2 del no. 1.
3. Coloque el no. 1 entre al agujero en el fregadero, alinee los lados calientes y fríos paralelo a la línea del fregadero.
4. Instale el No. 2 y el No. 3 en el no. 1; cierre el No. 3.
5. Instale el No. 4 entre los agujeros roscados del No. 3. Apriete por mano.
6. Conecte las líneas de suministro y revisa por fugas.

FR Installation du Robinet:

1. Fermez l'arrivée d'eau et vidanger les tuyauteries. Percez un trou d'environ 3,81 cm de diamètre dans le comptoir où vous installez le No. 1.
2. Retirez le No.3. et No.2. du No.1.
3. Placez le No.1. dans le trou de l'évier, alignez les cotés chauds et froids parallèles à la ligne de l'évier.
4. Installez le No.2. et No.3. sur No.1., serrez le No.3.
5. Installez le No.4. dans les trous filetés du No.3. Serrez à la main.
6. Raccordez les conduites d'alimentation et vérifiez qu'il n'y ai aucune fuite.

DE Wasserhahn Installation:

1. Wasserzufuhr ausschalten und Rohre entleeren. An der Stelle in der Arbeitsfläche, wo Nr. 1 installiert werden soll, wird eine Öffnung mit einem Durchmesser von 3,81 cm gebohrt.
2. Nr. 3 und Nr. 2 von Nr. 1 entfernen.
3. Nr. 1 durch die Öffnung im Becken einführen und Heiß- und Kaltwasserleitungen parallel zur Beckenleitung ausrichten.

4. Nr. 2 und Nr. 3 an Nr. 1 installieren. Nr. 3 festziehen.
5. Nr. 4 in den Gewindeöffnungen von Nr. 3 installieren. Von Hand festziehen.
6. Wasserleitungen erneut anschließen und auf undichte Stellen prüfen.



龙头安装:

1. 关闭供水和排水阀门, 在你需要安装1号的地方钻一个直径约1-1/2" 的孔。
2. 从1号上取下2号和3号。
3. 将1号放入水槽开孔中, 确保冷热水的两侧与水槽平行。
4. 将2号和3号装到1号, 并拧紧3号。
5. 将4号安装到3号的螺纹孔中, 用手拧紧。
6. 连接供水管并检查是否漏水。



CARE AND CLEANING OF CHROME AND SPECIAL FINISHES

DO NOT use abrasive or chemical cleaners (including chlorine bleach) to clean faucets as they may dull the luster and attack the chrome or special decorative finishes. Use ONLY soap and water, then wipe dry with clean cloth or towel. While cleaning the bathroom tile, the faucet should be protected from any splattering of cleaner. Acids and cleaning fluids will discolor or remove chrome plating. Do not use abrasive or chemical cleaners on the sensor lens as this will damage it and affect operation.



CUIDADO Y LIMPIEZA DE LOS ACABADOS CROMADOS Y ESPECIALES

NO use productos químicos limpiadores o abrasivos (incluyendo blanqueador a base de cloro) para limpiar los grifos, ya que pueden opacar el brillo y dañar el cromo o los acabados decorativos especiales. SOLO use agua y jabón, después seque con una toalla o paño limpio. Cuando limpie los mosaicos del baño, debe proteger el grifo para evitar que le salpique limpiador. Los ácidos y los líquidos de limpieza decolorarán o removerán la cubierta de cromo. No use productos químicos limpiadores o abrasivos en el lente del sensor, ya que esto lo dañará y afectará su funcionamiento.



ENTRETIEN ET NETTOYAGE DU CHROME ET DES FINITIONS SPÉCIALES

N'UTILISEZ aucun produit abrasif ou chimique (même de l'eau de Javel) pour nettoyer les robinets car ces produits peuvent endommager le lustre et attaquer le chrome ou les finitions décoratives spéciales. N'UTILISEZ que de l'eau et du savon, puis essuyez avec un chiffon ou une serviette propre. Lors du nettoyage du carrelage de la salle de bains, il faut protéger le robinet de toute éclaboussure de produit de nettoyage. Les acides et les liquides de nettoyage décolorent ou attaquent le placage de chrome. N'utilisez ni produits abrasifs ni produits chimiques sur la lentille du capteur car cela l'endommagerait et affecterait son fonctionnement.



PFLEGE UND REINIGUNG VON CHROM UND SPEZIALVERARBEITUNG

KEINE aggressiven oder chemischen Reinigungsmittel (einschl. Chlorbleiche) verwenden, um die Armaturen zu reinigen, da dies den Glanz nimmt und Chrom oder spezielle dekorative Ausführungen angreift. NUR Wasser und Seife verwenden, dann mit einem sauberen Tuch oder Handtuch trocken reiben. Beim Reinigen der Badezimmerfliesen, sollte die Armatur gegen Spritzer des Putzmittels geschützt werden. Säuren und Reinigungsflüssigkeiten entfärben oder entfernen die Verchromung. Keine scheuernden oder chemischen Reinigungsmittel auf der Sensorlinse verwenden, da diese Beschädigungen verursachen und den Betrieb beeinträchtigen können.



铬和特殊表面涂层的保养和清洗

切勿使用磨砂或化学清洗剂 (包括氯漂白剂) 来清洁水龙头, 这可能会削弱光泽度并腐蚀铬或者特殊表面涂层。只能使用肥皂和水清洗, 然后用布或者毛巾擦干。在清洗浴室瓷器时, 应避免龙头溅到任何清洗剂。酸性试剂和清洗液会使铬层褪色或者脱落。切勿在传感器镜头上使用磨砂或化学清洗剂, 这会导致其损坏并且影响运行。

RELATED EVERSTEEL PRODUCT LINE



S133X

Stainless Steel 5-3/4"
Spread Swivel Gooseneck

S-0230-LN

Stainless Steel Double
Pantry 8" Wall-Mount Base
Faucet Less Nozzle



T&S BRASS AND BRONZE WORKS, INC.

A firm commitment to application-engineered plumbing products

2 Saddleback Cove, P.O. Box 1088,
Travelers Rest, SC 29690

Phone: (864) 834-4102

Fax: (864) 834-3518

E-mail: tsbrass@tsbrass.com

T & S Brass-Europe
'De Veenhoeve'

Oude Nieuwveenseweg 84

2441 CW Nieuwveen

The Netherlands

EVERSTEEL
BY 