

XM

COMPACT PASSTHROUGH DISHWASHER

STARLINE by WASHTECH



STANDARD FEATURES

- 1, 2 and 3 minute cycles
- 2.2L per cycle water consumption
- Compatible with 450mm racks
- Washes up to 840 dishes per hour
- Compact 510mm benchgap
- Suitable for 600mm-700mm bench depth
- Washtech hybrid controls
- Easy change to higher power / rapid rinse recovery mode
- Hands-free auto-drain with drain pump
- 1.0HP wash pump and dual chemical pumps
- Heavy duty stainless steel wash manifold and scrap trays
- Stainless steel wash and drain filter

- 1x 450mm dish rack (600 70081)
- 1x 450mm cup rack (600 70080)
- 1x cutlery container (C660503)

SPECIFICATIONS

A - Hot Water

Temperature	65°C
Connection	3/4" male, hose supplied
Pressure	200-350kPa
Flow	20L per minute
Backflow prevention	Atmospheric vacuum breaker
Consumption	2.2L per cycle*

D - Drainage

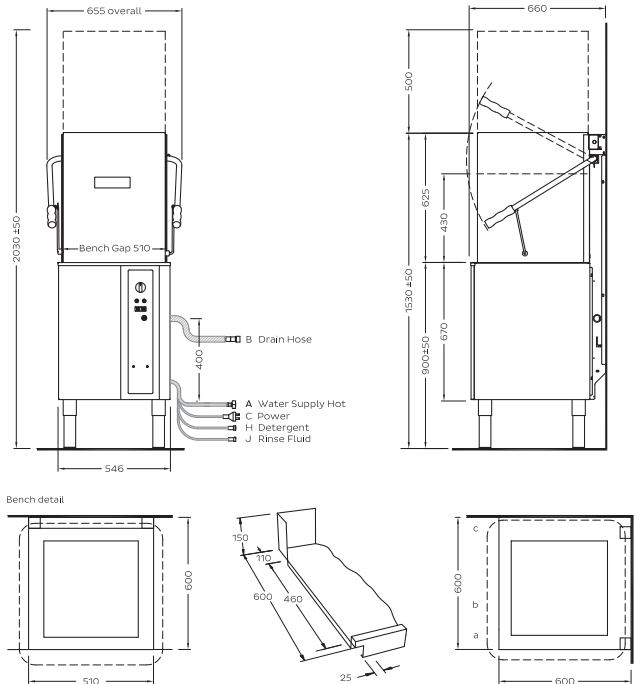
Drain pump flexi-hose	25mm
-----------------------	------

C - Electrical

	V	Hz	A/ph	Max kW
Single phase	230-240	50	15	3.75
Single phase	230-240	50	25	5.75
Three phase	400-415	50	15	9.00

*Water consumption rates may vary based on site conditions
Isolating switch must be within 1m of, and not directly behind, the machine
Refer to operator manual for installation instructions

In line with policy to continually develop and improve its products, Washtech reserves the right to change specifications and design without notice.



Dimensions

	Machine	Packed
Width (mm)	655	685
Depth (mm)	660	710
Height (mm)	1530	1450
Weight (kg)	73	94
Volume (m3)		0.71

Water Quality

	Min	Max
pH	7	8
Hardness	20	100
Cl-		100
SO4		400
Fe		0.1
Mn		0.5
Cu		0.05
Cl2		0.1

Corner Installation Notes:

- Machine must face left for easy access to the controls
- Allow 300mm clearance to front for service access
- Splashback return to be no higher than 150mm

an Ali Group Company



the spirit of excellence