

AL8

Passthrough Warewasher

W 905mm x D 760mm x H 1750mm

Starline warewashers are built to improve the efficiency of operations washing oversized and/or heavily soiled items, from bakeries to production kitchens, supermarkets to hospitals. This is achieved with a continuous and consistent wash process throughout the day that is easy on your staff. With highly efficient water consumption rates, Starline warewashers are also light on the environment and operating costs.

The AL8 is a powerful, highly durable, simple-to-use and easy-to-maintain passthrough warewasher. It features Starline Hybrid Controls which combine IP65 stainless steel switches, tried-and-tested switchgear, with a customisable electronic timer. Built with a large wash chamber and carefully counterbalanced passthrough door, the AL8 is ideal for washing bins, crates, bowls and other oversized items.

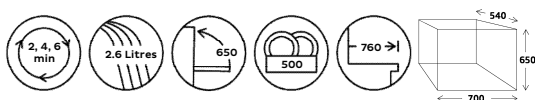
Since 1981 Starline dishwashers have been constructed from heavy-duty stainless steel, and are engineered specifically for local conditions and regulations. Backed by the most extensive service network and spare parts inventory in the region, your Starline AL8 will not let you down.

Standard Features

- Versatile 2, 4 and 6 minute wash cycles
- Large internal wash chamber with useable area of W 700mm x D 540mm x H 650mm
- Low hot water consumption of 2.6 litres per cycle
- Starline Hybrid Controls
- Self cleaning cycle
- Easy Installation supplied complete with:
 - Water supply hose
 - Detergent and rinse aid pumps with injector lines
 - No commissioning required
- High powered wash system
- Suitable for connection to low inlet water temperature and/or pressure (break tank and rinse pump fitted)
- Heavy-duty stainless steel construction and wash manifold
- Robust stainless steel wash and rinse arms with precision stainless steel jets
- Double heavy duty stainless steel filtration system including dual scrap trays and separate wash inlet filter
- Wash chamber easily accessible via counter-sprung hood
- Easy loading with inline bench work
- Comprehensive 24 month Starline warranty

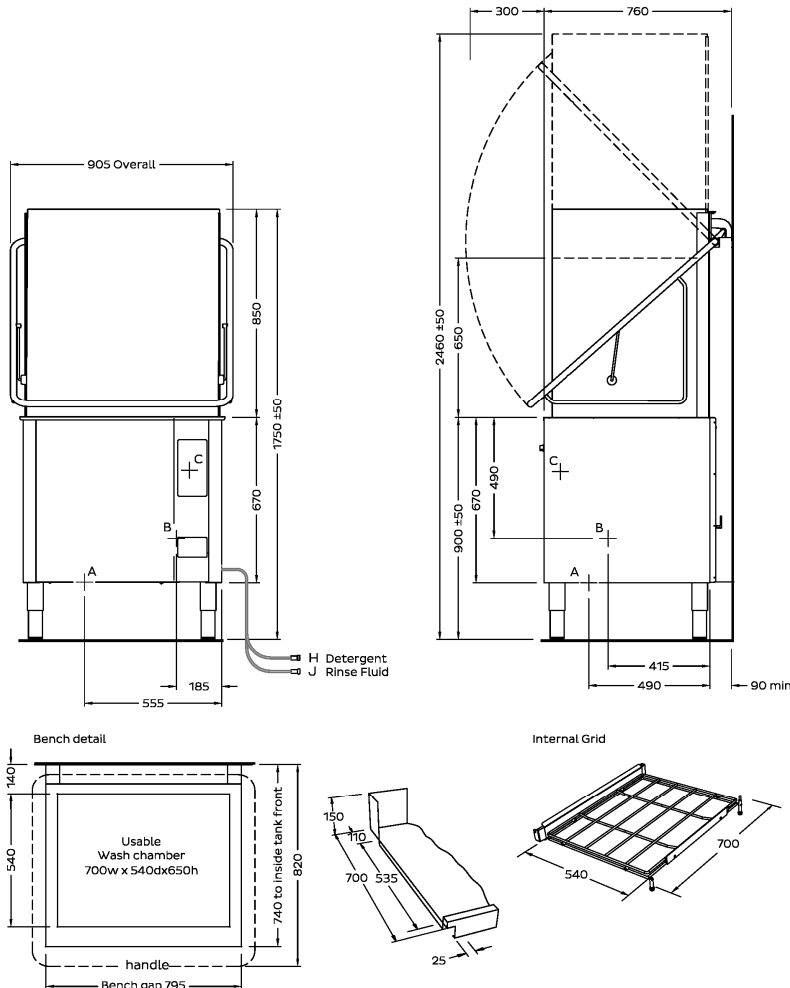
Includes:

- 1 x 500mm x 600mm dish rack (600 70042)
- 1 x 500mm x 600mm cup rack (600 70043)
- 1 x 435mm cup cover (K0452)
- 1 x cutlery basket (C660508)
- 1 x cutlery container (C660503)



AL8

Passthrough Warewasher
W 905mm x D 760mm x H 1750mm



ISO9001

All Starline products are designed and manufactured by Washtech using the internationally recognised ISO9001 quality management system, covering design, manufacture and final inspection, ensuring consistent high quality at all times.

In line with policy to continually develop and improve its products, Washtech reserves the right to change specifications and design without notice.

WASHTECH LTD
PO Box 90-548
Auckland 1142
414 Rosebank Road
Avondale
Auckland 1026
New Zealand
Phone 09 829 0930
info@washtech.co.nz
www.starline.co.nz



A Hot water				
Temperature	65°C			
Connection	3/4" male; hose supplied			
Pressure	200-350kPa			
Flow	10 litres per min			
Quality	Potable - refer table			
Backflow Prevention	Atmospheric Vacuum Breaker			
Consumption	2.6 litres per cycle			
B Waste				
Connection	1.5" BSP			
Line	2" BSP			
C Electrical	V	Hz	A/phase	max kW
Three Phase	400	50	25	18.00

Dimensions	Machine	Packed
Width	905	1000
Depth	760	910
Height	1750	1650
Weight	150	180
Cubicmetres		1.50

Water Quality	Min	Max
pH	7	8
Hardness ppm	20	100
Cl-		100
SO ₄		400
Fe		0.1
Mn		0.5
Cu		0.05
Cl ₂		0.1

Refer operator manual for installation instructions. Isolating switch must be within 1m of, and not directly behind the machine.

an Ali Group Company



The Spirit of Excellence

On call service where you are. Washtech provides full service backup, 24 hours a day, 7 days a week with factory based technicians and a comprehensive nationwide network of independent service providers. STARLINE SERVICE 09 829 0923 © Copyright Washtech 2016 Version 1903