

Starline UD

OPERATOR USE

START

- Turn on at wall.
- Ensure the Wash / Drain Filter Basket (1) and Scrap Tray (2) are in place and shut the door.
- Press STANDBY to start the machine, it will begin to fill and heat automatically.
- Screen will advise progress and change to blue when wash and rinse up to temp.

OPERATION

- Load rack into the machine and shut door.
- Select Light, Medium, or Heavy cycle option and press start button.
- Machine will advise operation and progress while cycle is running.
- Screen will revert back to home screen once cycle has been completed.



NOTE: Your dishwasher includes a number of advanced functions to provide ease of use:

- Wash Interlock: When active, this delays the start of a cycle until the wash temperature has been heated to a suitable level to ensure cleanliness and avoid foaming in the wash tank.
- Thermostop: When active, thermostop allows the machine may be started while the rinse water is being heated – the machine will continue to run the wash cycle until the rinse water is up to temperature.

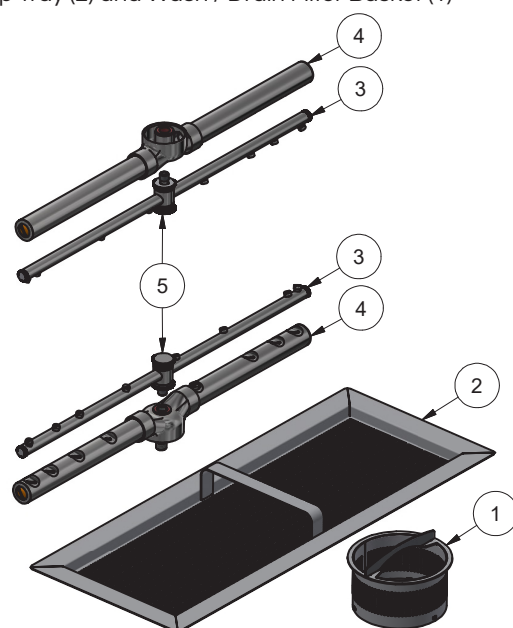
SHUT DOWN - EVERY NIGHT

- Open the door, press the Drain/Standby and then close the door .
- Your dishwasher will run a self-cleaning cycle, completely drain and then turn itself off.
- Once the machine is in Standby and has cooled down remove and rinse Scrap Tray (2) and Wash / Drain Filter Basket (1)
- Check and clear any waste from inside the drain sump and there is no other residue or build-up elsewhere in the machine.
- Replace Wash / Drain Filter back into machine.

CLEANING – AT LEAST ONCE A WEEK

- Remove, rinse and replace when machine has cooled down:

| | |
|-----------------------------|---|
| Wash / Drain Filter Basket | 1 |
| Scrap Tray | 2 |
| Rinse Arms | 3 |
| Wash Arms | 4 |
| Wash / Rinse Arm Thumbscrew | 5 |
- Unscrew thumbscrew (5) to remove Wash Arms (4) and Rinse (3) Arms.
- Inspect Arm and ensure that all jets are clear.
- Use a small object (e.g. toothpick) where necessary to remove any blockages
- Check wash element once cool and clean if necessary.



SUGGESTED BEST PRACTICE

- | | |
|-----------|--|
| Pre-rinse | Scrape and/or rinse glasses in cool water. |
| Chemical | Use a good quality non foaming commercial detergent and drying agent – do not use domestic detergents which will cause the machine to foam. Do not use domestic tablets or excessively chlorinated chemicals. |
| Servicing | Commercial dishwashers should be serviced at least every 15,000 cycles or 6 months. |

Service 0800 STARLINE
 Parts 09 829 0930
 Starline UD Series-9 Nov-24

WASHTECH®

Starline UD

TROUBLESHOOTING

| ISSUE | CAUSE | | | | | | | | | | |
|-----------------------------------|-------------------|------------------------------|-------------------|-----------------------------|----------------------------------|-------------------------------|-------------------------|------------------------------|----------------------------|------------------------------|----------------------|
| | POOR PRE-SCRAPING | CARRY OVER OF SOAP FROM SINK | OVERLOADING RACKS | INADEQUATE MACHINE CLEANING | INSUFFICIENT WATER PRESSURE/FLOW | INSUFFICIENT WASH TEMPERATURE | WASH/RINSE JETS BLOCKED | WASH/RINSE ARMS NOT ROTATING | DETERGENT DOSAGE LOW/HIGH* | RINSE FLUID DOSAGE LOW/HIGH* | POOR WATER QUALITY** |
| DISHES NOT CLEAN | ● | | ● | ● | | | ● | ● | ● | | ■ |
| STAINING | ● | | | | | | ● | ■ | ● | | ■ |
| FOAMING | | ● | | ■ | ● | ● | | | ■ | ■ | |
| PROTEIN BLOOM | ■ | | ■ | ● | | | ■ | ■ | ■ | | |
| DIRTY MACHINE | ● | | | ● | | | ■ | ■ | ■ | | ■ |
| FOOD RESIDUE ON WASHWARE | ■ | | ● | ■ | | | ■ | ■ | ● | | |
| FILM / SPOTS ON WASHWARE | | | ■ | ■ | ● | | ■ | ● | ● | | ■ |
| DETERGENT RESIDUE | | | | | ● | | ■ | ● | ● | | |
| GREASY FILM / NO FIZZ IN DRINKS | | | ■ | | | | | | | ● | ■ |
| HIGH DETERGENT USAGE | | | | ■ | | | | | ● | | |
| HIGH RINSE FLUID USAGE | | | | ■ | | | | | | ● | |
| WET WASHWARE | | | ● | ■ | | ● | | | | ● | |
| SCALE BUILD UP IN MACHINE | | | | ■ | | | | | ■ | | ● |
| FILTERS NEEDED ON OTHER EQUIPMENT | | | | | | | | | | | ● |



Likely Cause of Issue



Possible Cause of Issue

* For issues most likely due to incorrect chemical dosages or other chemical issues, we recommend you consult your chemical supplier and/or a local chemical expert prior to calling in a dishwasher technician.

** For issues that are likely due to poor water quality (scale building up, filters being required on other kitchen equipment etc.), we recommend you consult a local water specialist prior to calling in a dishwasher technician.

IF PROBLEMS PERSIST CONTACT STARLINE SERVICE ON 0800 STARLINE

Service
Parts
Starline UD Series-9

0800 STARLINE
09 829 0930
Nov-24

WASHTECH®