

Delta Electric Toaster Operation Manual



ESM1—Electric Toaster
Please read these instructions carefully.

IMPORTANT SAFETY INSTRUCTIONS

TRAITS

Manufactured in Stainless steel, this compact slot toaster with crumb tray is suitable for restaurant and cafes. Ability to control 2,4 or 6 slices at a time. Has a timer and lift handle.

THE STRUCTURE

1. Bread slots.
2. Controller for number of slices.
3. Power indicator.
4. Timing function.
5. Stainless casing.
6. Removable crumb tray.
7. Lifting handle.



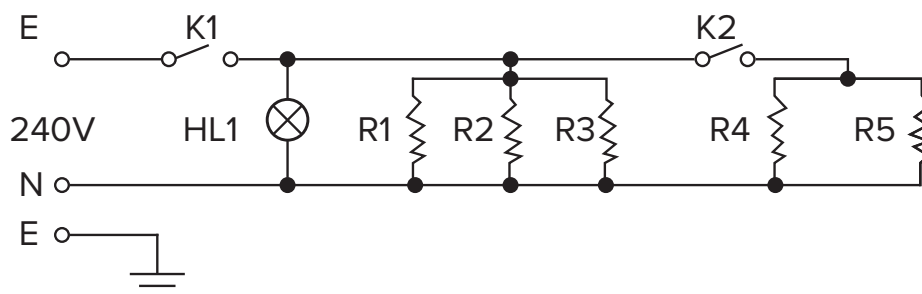
OPERATING INSTRUCTIONS

1. Plug unit in at the wall and switch on.
2. Indicator light will switch on
3. Place required number of slices of bread into slots
4. Set controller to number of slices required
5. Set time to required toast colour
6. When the timer goes off, lift the toast lifting handle

THE PARAMETERS OF THE FACILITIES

| Type | ETS-4A | ETS-6A |
|------------------|----------------------|----------------------|
| Name | (Four-Slice Toaster) | (Six-Slice Toaster) |
| Rated Load (V) | 220-240V/50-60Hz | 220-240V/50-60Hz |
| Rated Power | 1.8 (1.1/1.8) KW | 1.8 (1.1/1.8/2.5) KW |
| Toast Time | 0-5 minutes | 0-5 minutes |
| Number of slices | 2–4 slices | 2–6 slices |
| Dimension | 303 x 245 x 221mm | 405 x 245 x 221mm |

WIRING DIAGRAM



K1—On-off switch
HL1—The indicator light

K2—Slicer Controller
R1-R5—Electric resistors

CLEANING AND MAINTENANCE

1. Turn power off at the wall to prevent accidents
2. Empty out crumb tray
3. Use damp cloth to clean, avoid the use of abrasive cleaners.
4. Do not spray or submerge with water.