

# XP

Passthrough Dishwasher

# STARLINE

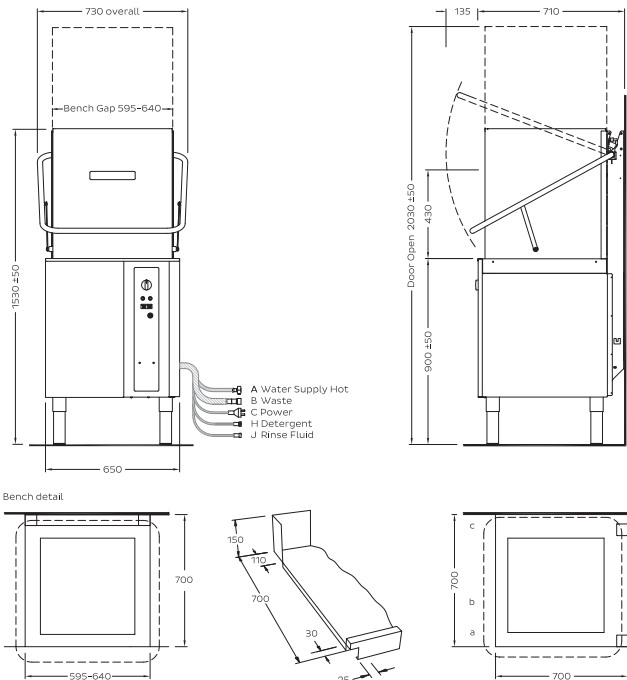
by **WASHTECH**



## STANDARD FEATURES

- 1, 2 and 3 minute cycles
- Washtech hybrid controls
- Flexible benchgap from 595mm to 640mm
- Dual chemical pumps
- Drain pump
- Heavy-duty stainless steel construction and manifold
- Two-stage stainless steel filtration

- 1x 500mm dish rack (600 70028)
- 1x 500mm cup rack (600 70029)
- 1x cutlery container (C660503)



## SPECIFICATIONS

### A - Hot Water

Temperature	65°C
Connection	3/4" male, hose supplied
Pressure	200-350kPa
Flow	20L per minute
Backflow prevention	Atmospheric vacuum breaker
Consumption	2.6L per cycle*

### D - Drainage

Drain pump flexi-hose	25mm
-----------------------	------

### C - Electrical

V	Hz	A/ph	Max kW
Single phase 240	50	15	3.25
Single phase 240	50	25	5.75
Three phase 400	50	15	7.50

### Dimensions

	Machine	Packed
Width (mm)	730	760
Depth (mm)	710	820
Height (mm)	1530	1460
Weight (kg)	94	125
Volume (m3)		0.91

### Water Quality

	Min	Max
pH	7	8
Hardness	20	100
Cl-		100
SO4		400
Fe		0.1
Mn		0.5
Cu		0.05
Cl2		0.1

\*Water consumption rates may vary based on site conditions  
Isolating switch must be within 1m of, and not directly behind, the machine  
Refer to operator manual for installation instructions

In line with policy to continually develop and improve its products,  
Washtech reserves the right to change specifications and design without  
notice.

#### Corner Installation Notes:

- Machine must face left for easy access to the controls
- Allow 300mm clearance to front for service access
- Splashback return to be no higher than 150mm

#### Inline Installation Notes:

- Front panels can be adjusted to 605mm leaving upper sill only at 650mm
- For sites with full height cabinet gap of less than 650mm, order SXP0030