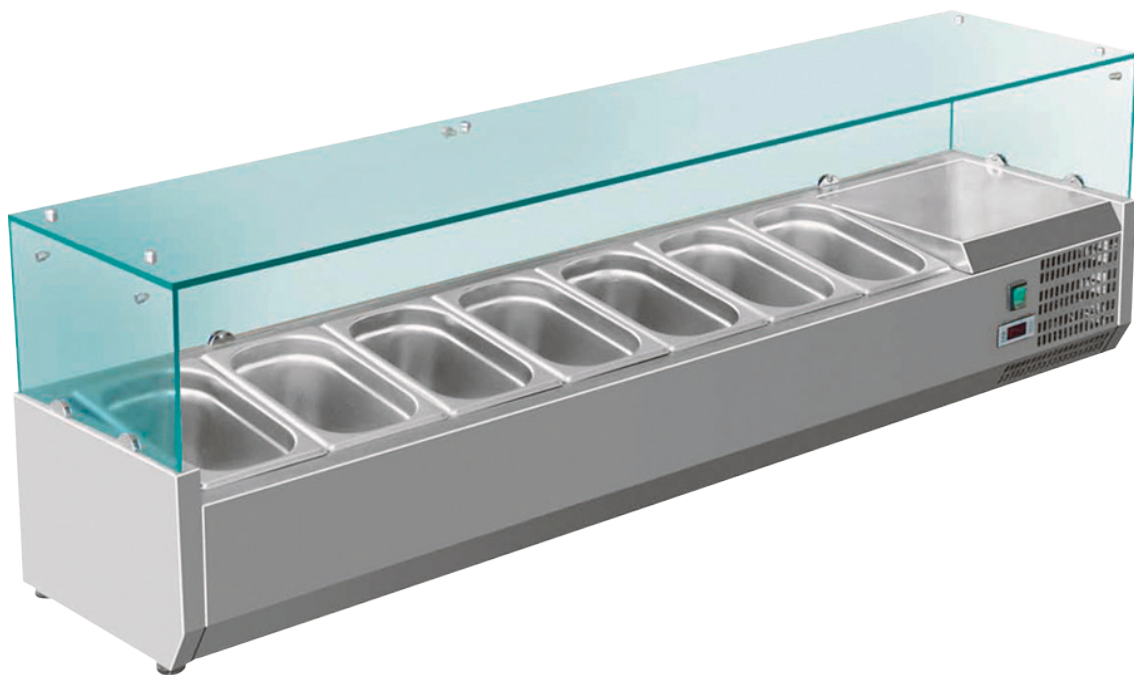


DELTA COUNTERTOP PIZZA AND SANDWICH PREP DISPLAY CHILLER 2000mmW



ERD142 FEATURES

- Complete structure in stainless steel AISI 304
- Electronic thermostat
- Static cooling continuous evaporator
- Gastronorm pans excluded
- Assembly required
- 24 months parts and labour warranty

ERD142 SPECIFICATIONS

External Dimensions	2000mmW x 380mmD x 435mmH
Internal Dimensions	1645mmW x 305mmD x 155mmH
Net Weight	37kg
Capacity	10 GN 1/3 pans
Refrigerant	R600a
Power Supply	150W, 220V–240V, 50Hz, 10amp
Operating Temperature	+2°C to +10°C

ERD142

• Specifications are subject to change without notice. Subject to correct use and maintenance.

DISTRIBUTED BY:



p: 0800 503 335

e: weborders@southernhospitality.co.nz

w: www.southernhospitality.co.nz