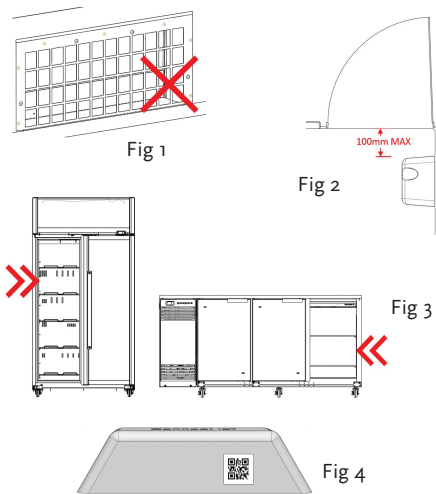


Important advice

- Install away from any air grille (fig 1).
- Install within 100mm of the hinged side of the door (figs 2 & 3) to measure door openings.
- Install device with the QR code facing away from the door (fig 4).



Install on a fridge

1. Wipe the install area clean using the alcohol wipe.
2. Peel off the backing to the adhesive on the EYE.
3. Place the EYE in the install area. Press firmly for 10 seconds to ensure it is stuck down.

Install on a freezer

- Adhesion can be difficult if the freezer is at operating temperature.
1. Peel off the backing to the adhesive on the EYE.
 2. Turn off the freezer. If that's not practical, temporarily adjust temperature on the surface where you wish to place the EYE:
 - Apply warm water with a towel. Hold for 10 seconds.
 - Quickly wipe dry with a clean paper towel.
 3. Place the EYE on the install area. Press firmly for 10 seconds to ensure it is stuck down.

Included hardware

Use screws as a last resort or if permanent fixing is desired. Use of the screws may cause irreparable damage to the fridge, or injury to the user, that is not covered by SKOPE. Please contact your fridge manufacturer for advice.



Device Specifications

Size	107 x 42 x 27 mm
Weight	70g
Operating Temperature	-35°C to 40°C
Ingress Protection	IP67
Power Source	Lithium, non-replaceable
Battery Life	Up to 5 years (fridge) Up to 2 years (freezer)
Data Storage	2 months

Using the app

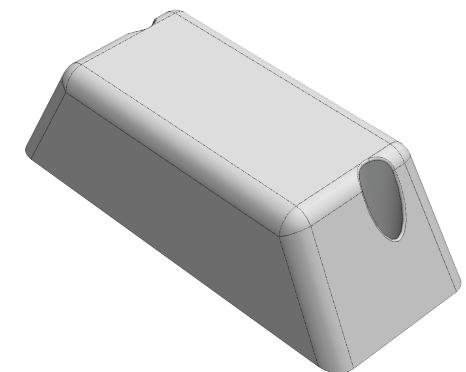
For more instructions and FAQs on how to use the app:
skope.com/skope-connect-resources

Support

Australia: 1800 121 535 International: +64 3 983 3800
 New Zealand: 0800 947 5673 Email: skope@skope.com

Congratulations on purchasing a SKOPE-connectEYE

By using the EYE with the SKOPE-connect app you can monitor and record refrigeration temperature.



Connect to the app

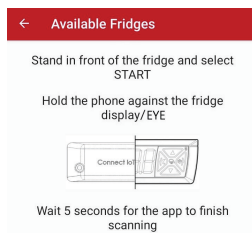
1. Download the SKOPE-connect app from Google Play or the AppStore.



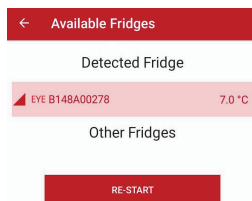
2. Open the app, touch '+' at the top.



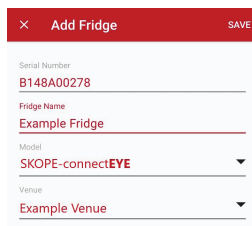
3. Follow on-screen instructions for scanning the EYE. Make sure the EYE's serial number matches.



4. Once scanned, tap the EYE's serial number to select.



5. If desired, rename. Touch SAVE.



Wait a few minutes for the EYE to stop syncing its stored data before using. The Bluetooth icon to the right of the signal strength bar will disappear.



Set temperature alarms

1. Track the condition of product stored in your fridge or freezer by setting temperature alarms.
2. Open the SKOPE-connect app and navigate to the Temp page for the EYE device.
3. Toggle the Temperature Alert switch to ON. You will receive notifications if the estimated product temperature exceeds the limits you have set.
4. If necessary, change alarm limits by tapping ALLOWABLE RANGE and moving the slider.

For a fridge, use 5°C for the upper limit and 0°C for the lower limit. For a freezer, use -15°C as the upper limit and -30°C as the lower limit. Note: These alarm limits are a guide and may need to change based on the appliance settings.

Calibrate EYE for food safety measurement

To use the EYE for food safety measurements, first calibrate to measure the worst-case temperatures inside a fridge. Hand-held thermometer required.

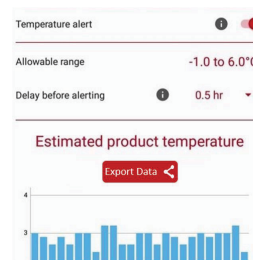
1. Identify the warm locations within the fridge.
2. Place a glass of water or suitable food sample near a warm spot.
3. Wait 6+ hours for the sample to cool.
4. Ensure doors have been closed for 30+ minutes.
5. Go to Temp in the app, tap CALIBRATION.
6. Take a manual temperature reading with a thermometer and compare to the app.
7. Match temperatures using the temperature slide and tap SAVE.

For thermometer calibration guidance contact the Australian Institute of Food Safety (1300 797 020) or the New Zealand Ministry of Primary Industries (04 830 1574).

Export temperature data

The EYE supports up to two months of stored data. We recommend exporting temperature data at least once a month to avoid data loss.

1. Open SKOPE-connect and navigate to the Temp page for the EYE device.
2. Tap EXPORT DATA, located above the temperature graph.



Frequently asked questions

Why can't I connect to the EYE with SKOPE-connect?

Try using your smartphone's in-built Near Field Communication (NFC) to activate the device by tapping it.

This will open a 30-second window for connecting to the EYE with the SKOPE-connect app.

If this doesn't work, or your smartphone doesn't have NFC, contact SKOPE customer support (see below).

The EYE has fallen off the side of the fridge/freezer. What can I do?

Remove and replace the double-sided permanent tape, also known as VHB tape.

When re-applying the EYE, take care to ensure that the mounting surface is clean and free of moisture.

What happens when the EYE has run out of battery?

The EYE is designed to last up to 5 years in a fridge, and 2 years in a freezer. SKOPE-connect will notify you when the battery is low.

When this happens, it is important to use SKOPE-connect to save any recent data so that it is not lost.

When the battery has run out, dispose of the device at an approved lithium battery disposal site.

How often should I export/save temperature data?

The EYE can hold up to 2 months of stored data.

To ensure data is not lost, export this data at least once a month using the export function in SKOPE-connect.