

Blue Seal Electric Combi Steamer

SAPIENS RELOADED E710RSDW 7 x 1/1 GN on 10 x 1/1 GN (2 in 1 model)



- Versatility in a single unit with 2 separate controls and 2 cooking chambers
- Manual controls
- Multi-point core temperature probe
- Variable fan speed with up to 6 speeds
- 95 preset recipe programs, including programs for reheating on the plate / pan
- 99 free programs, up to 9 cycles with name and icon creation
- AUTOCLIMA automatic system for measuring and controlling the humidity in the cooking chamber
- Fast-Dry, quick dehumidification of the cooking chamber
- LED HVS alphanumeric display for temperature, Autoclimate, time and core temperature
- 2.4" LCD – TFT colour display for favourite programs, pre-set programs, fan, automatic washing, menus and settings.
- Rapid selection scroller knob for program using scroll & push functions
- LED bars to indication actual cooking cycles in program mode
- Manual pre-heating
- Electronic thermostat 30°C-300°C
- Auto reverse (automatic reversing fan rotation) for perfect cooking uniformity
- Automatically regulated steam condensation
- Manual chamber pressure relief control
- Manual humidifier
- ECOVAPOR – automatic control of the system saturation in the cooking chamber
- ECOSPEED – oven optimises and controls the delivery of energy to maintain correct cooking temperature
- LM automatic cleaning system with separate container and automatic dispensing
- Built-in retractable hand shower with tap
- USB connection to download HACCP data, software updates and storing cooking programs

GENERAL FEATURES

- Direct Steam injection system
- Perfectly smooth, water tight chamber
- Double tempered glass door with air chamber and interior heat-reflecting glass reduces head radiation towards operator
- Hinged inner glass for easy cleaning
- Adjustable door hinge for optimal seal
- Fan motor thermic protection
- Low water alarm
- Component cooling system with overheat display control
- Self-diagnosis and fault display
- Oven light
- IPX5 spray-proof and hose proof

OPTIONAL FEATURES

- Right hinged door
- Configuration for connection to extraction hood



Blue Seal Electric Combi Steamer

SAPIENS RELOADED E710RSDW 7 x 1/1 GN on 10 x 1/1 GN (2 in 1 model)

Dimensions

Width	930mm
Depth	825mm
Height	1925mm
Weight	300kg

Packed dimensions

Width	1000mm
Depth	1000mm
Height	2000mm

Shelves

1/1 GN	7 + 10
Shelf Spacings	70mm

Installation requirements

(for precise installation instructions, please refer to the unit's installation manual).

Power connection requirements

Multi pole circuit breaker and all pole disconnection isolator switch installed near the appliance.

Supply line voltage

400-415V ~ 50Hz, 3P+N+E

Special voltage options available on request.

Power connection

Total (kW)	26.5
Convection power (kW)	25
Rated Current (A) (400V)	40

Installation clearances

- rear	25mm
- right	500mm*
- left	50mm

*Clearance required on fixed installations for service accessibility.

If heat sources are located near the RH side of the Sapiens combi, ensure that a minimum distance of 400mm is maintained.

Install in accordance with local body regulations only on horizontal surfaces and not against combustible

walls.

Water connection requirements

- Cold water
- Flow pressure (200-500kPa)
- Soft water connection*
- Shut-off valve with return flow inhibitor and dirt filter
- Water supply R³/₄
- R50 waste water connection

(*Water softener may be required. Please refer to installation manual for water treatment values.)



Australia
www.moffat.com.au

New Zealand
www.moffat.co.nz

Australia
Moffat Pty Limited

Victoria/Tasmania
740 Springvale Road
Mulgrave, Victoria 3170
Telephone 03-9518 3888
Facsimile 03-9518 3833
vsales@moffat.com.au

New South Wales
Telephone 02-8833 4111
nswsales@moffat.com.au

South Australia
Telephone 03-9518 3888
vsales@moffat.com.au

Queensland
Telephone 07-3630 8600
qldsales@moffat.com.au

Western Australia
Telephone 08-9413 2400
wasaless@moffat.com.au

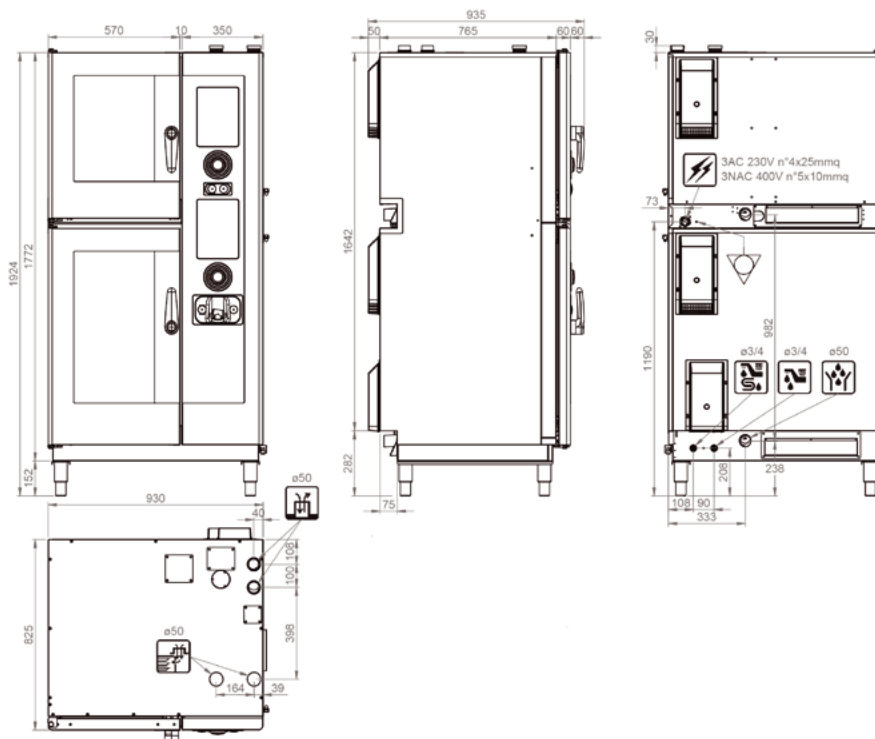
New Zealand
Moffat Limited

Rolleston
45 Illinois Drive
Izone Business Hub
Rolleston 7675
Telephone 03-983 6600
Facsimile 03-983 6660
sales@moffat.co.nz

Auckland
Telephone 09-574 3150
sales@moffat.co.nz

In line with policy to continually develop and improve its products, Moffat Limited reserves the right to change specifications and design without notice.

© Copyright Moffat Ltd
Moffat 1804



an Ali Group Company



The Spirit of Excellence