

Professionnal induction hob
GLN 1500 PASTRY
GLN 2500 / 3000

User's guide
For your induction hob



Dear Customer,

We would like to congratulate you on the purchase of your **ADVENTYS** product.

This one has been manufactured according to the very latest developments, using modern, safe electrical and electronic components.

Please take the time to read this user's guide before using this appliance.

Thank you for your confidence in our products.



Technical specifications

Model:	GLN 1500 / GLN 2500 / GLN 3000
Name:	Freestanding induction cooking appliance
Materials:	Stainless Steel / Aluminium / Ceramic Glass
Power:	1500 / 2500 / 3000 Watts
Electrical mains:	Single-phase 230V +/-10% 60Hz
Current:	7A / 10A / 13A.
Control:	Capacitive touch board.
Product dimensions:	310 x 385 x h105 mm.
Glass ceramic dimensions:	280 x 280 x 4 mm.
Min. allowed diameter of pan (bottom):	160 mm
Max. diameter of the pan:	280 mm
Maximum allowed distributed weight on the product:	15 kg
Net weight of the product:	3.5 kg

Compliance and waste statement



This product complies with current EU directives. We certify this in the EU compliance statement. We can send you a copy of the compliance statement in question if required.

The packing materials in which this appliance is packed are recyclable. Please recycle them by disposing of them in the appropriate containers at your local facility. In so doing, you will be making a contribution to the protection of the environment.

At the end of its useful life, the appliance to be scrapped must be destroyed in accordance with the applicable national regulations that govern the elimination and recycling of waste.

We recommend you contact a company that specialises in waste disposal.



WARNING :

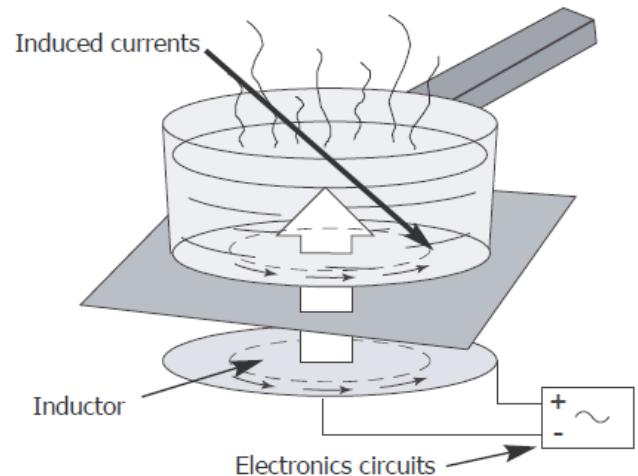
To avoid all risks associated with the destruction of the appliance, ensure that it is disconnected from the mains and that the mains cable is removed.

PLEASE NOTE !

When destroying the appliance, local rules and the applicable regulations in your country or geographical zone must be adhered to.

Using your hob safety

If this appliance is to be placed in close proximity to a wall, partition, kitchen unit, decorative trim, etc., it is recommended that the appliance be made of non-combustible material; if this is not the case, they must be covered with a suitable material, thermal insulation and non-combustible, with particular attention being paid to fire prevention regulations.



The functioning of the hob complies with the currently applicable norms concerning electromagnetic disturbance. Your induction cooking hob therefore fully meets the legal requirements (89/336/CEE directives). It has been designed not to cause disturbance to other electric appliances insofar as they also meet the requirements of the same regulations. Your induction hob emits magnetic fields in its immediate surroundings.

To avoid the possibility of interference between your cooking hob and a heart pacemaker, the latter must be designed to comply with the regulations that apply to it.

In this respect, we can therefore only guarantee the compliance of our own appliance. With regard to the compliance of a heart pacemaker or any eventual incompatibility, we recommend that you consult its manufacturer or your doctor.



If a crack appears in the surface of the glass, disconnect the appliance immediately from the mains supply to avoid the risk of electric shock. To do this, remove the fuses or operate the cut-off switch.

Do not use your appliance again until the vitroceramic glass has been replaced.

Only appropriate cookware should be placed on the hob. Do not put any other object on it, no matter what it is. Ensure that the mains cable of any electric appliance that is plugged into a socket located in the immediate vicinity of the hob does not come into contact with the cooking zones.

When cooking, never use aluminium foil and never place products that are wrapped in aluminium or frozen products in aluminium trays, on the hob. The aluminium will melt and will permanently damage your appliance.

Do not clean your hob with huge amounts of water. Use a little bit of household alcohol.

Do not use a steam cleaner.

If the mains cable is damaged, it must be replaced by the manufacturer, their After Sales Service or a person with similar qualifications to avoid risk.

This appliance is not intended for use by anyone (including children) whose physical, sensory or mental capacities are reduced, or lacking experience or knowledge, unless they have been able to benefit from prior instructions as to the use of the appliance or supervision by a person who is responsible for their safety.

Supervise children to ensure that they do not play with the appliance.

Users should exercise caution if wearing items such as rings, watches or similar objects when using the appliance since these may heat up when positioned very close to the cooking surface.

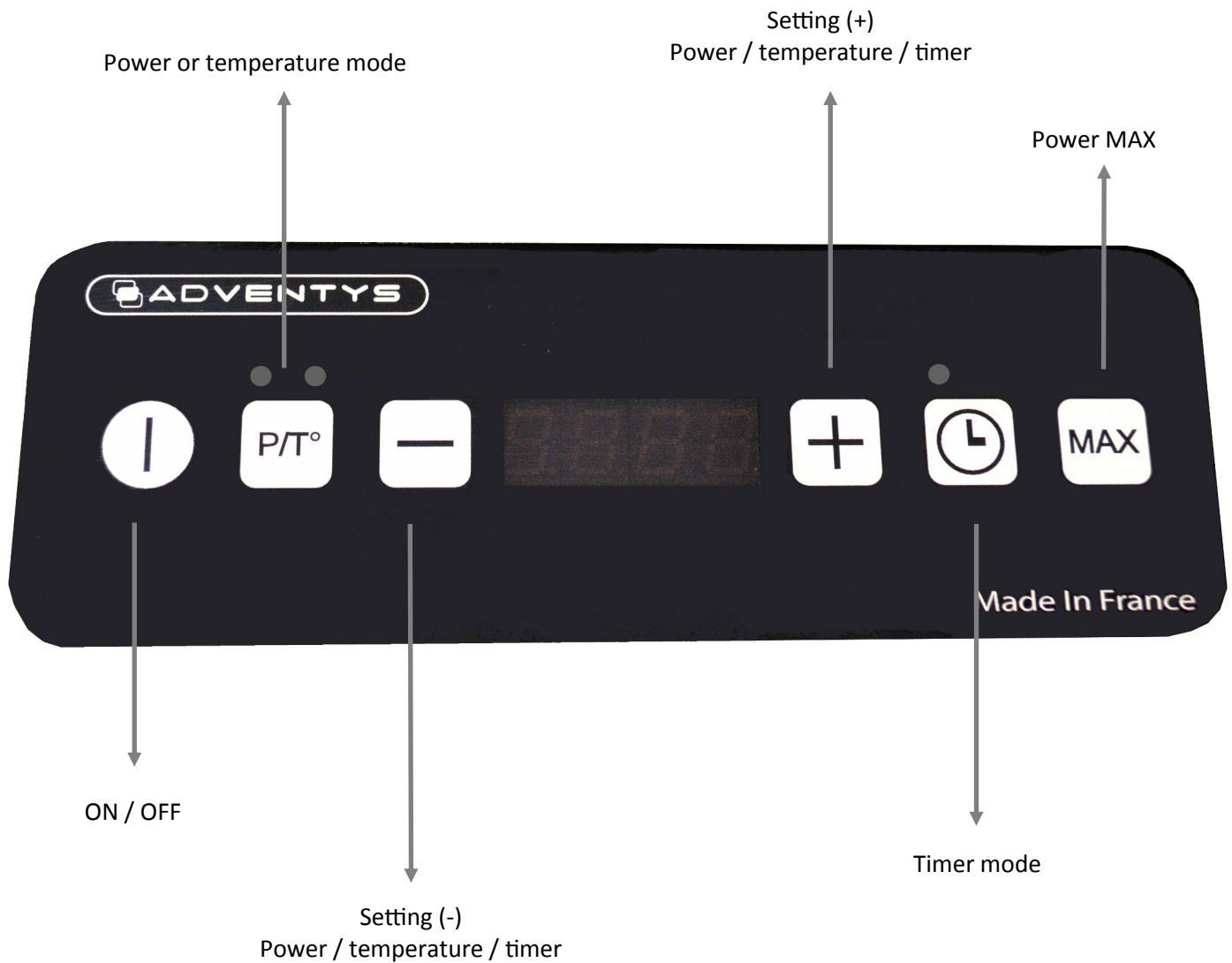
Only use pans of the type and size recommended.

Repairs must only be carried out by a technician who has been trained or recommended by the manufacturer.

Take care that the coating and the surrounding areas do not contain metal surfaces.

Your induction cooking appliance is not intended to be operated by means of an external timer or a separate remote control.

Controls :



Power settings

When an induction-compatible saucepan is placed on the fireplace, the display shows the wattage or the temperature in ° C. The temperature setting is 30 to 250 °C in increments of 5 °C.

Power setting:

GLN 1500	GLN 2500	GLN 3000
Power (W)	Power (W)	Power (W)
25	50	50
50	100	100
75	150	150
100	200	200
125	250	250
150	300	300
175	350	350
200	400	400
225	450	450
250	500	500
275	550	550
300	600	600
325	650	650
350	700	700
375	750	750
400	800	800
425	850	850
450	900	900
475	1000	1000
525	1100	1100
550	1200	1200
575	1300	1300
625	1400	1400
650	1500	1500
675	1600	1600
725	1700	1700
750	1800	1800
775	1900	1900
825	2000	2000
850	2100	2100
875	2200	2200
900	2300	2300
1000	2400	2400
1100	2500	2500
1200		2600
1300		2700
1400		2800
1500		2900
		3000

As soon as the pan is removed from the cooking zone, the display indicates the absence of the pan by a blinking. There is close to no consumption of power. If the display flashes when the pan recovers the cooking zone, it means that the material of the pan is not compatible with the induction technologie.

Cookware Recommended

Your induction hob is able to recognize the majority of pans and recipients.

Testing a pan: place the pan on the cooking zone with a power level set : **if indicator stays on**, your pan is **compatible**, if it **flashes**, your pan **has not been recognised and cannot be used**.

You can also test with the aid of a magnet: if it "sticks" to the base of the pan, then the pan is compatible with induction technology.

Induction-compatible pans are:

- **enamelled steel pans** with or without a nonstick coating.
- **stainless-steel pans** designed for induction. Most stainless steel pans are suitable if they pass the pan test.
- **cast-iron pans** with or without an enamelled base.
- **aluminium pans with special bases.**

• NOTE

Pans made from glass, ceramic material, clay, aluminium (without special pan base), and copper, as well as certain non-magnetic stainless steels are not compatible with induction cooking. The indicator for the power level selected will flash to inform you of this.



Containers made of plastic must not be placed on hot surfaces

How to maintain and care for your hob

Avoid shocks when handling the pans.

The glass surface is very strong, however it is not unbreakable.

Avoid rubbing the pans over the surface of the appliance.

Centre your pan on the induction cooking zone.

Do not leave an empty pan on the induction zone.

Do not pre-heat foodstuffs on the **highest power setting** if you are using a pan with an anti-stick coating (of the teflon type) without or with a tiny amount of cooking fat or oil.

Do not heat an unopened tin can, as it might burst.

All these defects that do not cause a non operation or inability to use are not covered by the guarantee.



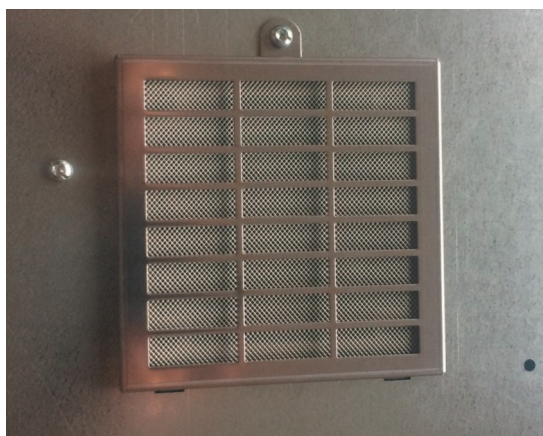
Do not leave metal cooking utensils, lids, knives or any other metal objects on the inductioncooking zone. These objects are liable to heat up if they remain too close to the magnetic field generated by the induction cooking zone.

How to maintain and care for your hob



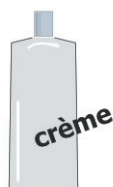
/Before any intervention to disassemble the filter, it is ESSENTIAL to unplug the power supply of the product.

Use an adapted tool (Torx T20) and clean approximately every week with soapy water the filter placed under your device (or put it in the dishwasher). Put it back very dry before any use. This filter protects your device from dust and fats.



Your device is cleaned easily, to help you, here is some advice:

Type of spots	How to proceed	Use
Slight	Dilute well the zone to clean with hot water then wipe.	Sanitary sponges
Accumulation of recooked spots	Dilute well the zone to clean with hot water, use a special scraper for glass to rough-hew, finish with the scraper side of a sanitary sponge, then wipe.	Sanitary sponges special scraper for glass
Haloes and tracks of limestone	Apply some hot spirit vinegar to the spot, let act, wipe with a soft cloth. Use a domestic product.	Special vitroc ceramic glass dough
Inlays following the overflowing of sugar, aluminium or molten plastic	Apply to the surface a special product for vitroc ceramic glass, rather containing some silicone (protective effect).	Special vitroc ceramic glass product



Small problems and their remedies

If you think that your hob is not functioning correctly this does not necessarily mean that a fault has occurred. Please verify the following in all cases :

YOU NOTICE THAT ...	POSSIBLE CAUSES	WHAT YOU CAN DO
When putting into service, a bright display appears	Regular functioning	NOTHING: everything is normal
When putting into service, your installation short-circuits	The connection of you device is defective	Verify your connection or the conformity of the connection
The ventilation continues a few minutes after stopping the device	Cooling of the device	It's normal
The device doesn't work. The display on the casing stays off	The device is not supplied. The supply or the connection is defective	Inspect fuses and the circuit breaker of your electric installation
« F- » appears on the display	There is a touch activated permanently on the control keyboard	If the default doesn't disappear, call the after-sales service
« F7 » appears on the display	Electric circuits are over heating	Inspect the ventilation of the device and check if it is operational
The device doesn't work, another code appears on the display	Electric circuits doesn't work well	Call the after-sales service
After switching on the device and starting the cooking zone, the selected indicator continues to flash	The pan you are using is not compatible with the induction technology or is of a diameter smaller than 16 cm	See « Cookware Recommended section »
Pan makes noise while cooking	It's a vibration generated by the circulation of the current in the pan	This phenomenon is normal with some type of pans. There is no danger
The device releases a smell during the first cookings	New device	Run the cooking during half an hour with a pan full of water
<p>If the vitroceramic hob suffers a breakage, split or crack, no matter how small, disconnect the appliance immediately and contact After-Sales Service.</p>		

Garantee

Keep the proof of purchase to use the guarantee service of your product.

Any modification such as drilling, welding, crimping, clinching, etc., is not permitted and is not covered by the manufacturer's warranty.

Any wrong modification or installation, which does not respect ADVENTYS' standards, is not covered by the manufacturer's warranty and will be permanently suspended.

The guarantee is subject to the non-modification of the product and its mechanical and electrical specifications. Opening the product cancels any form of warranty.

Any defects in appearance caused by the use of abrasive products or friction of cookware on the ceramic glass hob that does not result in a non-functioning or inability to use the appliance is not covered in the guarantee. The vitroceramic glass and the casing are not subject to warranty.

ANY REPAIRS MUST BE CARRIED OUT BY A QUALIFIED TECHNICIAN APPROVED BY ADVENTYS.

Only the distributors of our brand:

- **KNOW YOUR APPLIANCE PERFECTLY AND HOW IT WORKS.**
- **FULLY APPLY OUR METHODS OF ADJUSTEMENT, MAINTENANCE AND REPAIRS.**
- **USE ONLY ORIGINAL SPARE PARTS.**

In case of a claim or if you wish to order spare parts from your distributor, please specify the full reference numbers of your appliance (appliance type and serial number). This information appears on the plate fixed under the metal casing of the appliance.

The descriptions and characteristics given in this booklet are for information purposes only and do not imply commitment from the manufacturer. Concerned about the quality of our products, we reserve the right to carry out necessary changes or improvements without prior notice.

Original spare parts: ask your retailer for certified original spare parts during a maintenance operation.



Made In France