

Technical data sheet for

GAS CHARGRILL

300mm, 600mm, 900mm, 1200mm

CH8300G-B, CH8600G-B, CH8600G-LS, CH8900G-B, CH8900G-LS, CH8120G-B, CH8120G-LS



CH8120G-LS

- Heavy-duty construction
- Reversible heavy-duty top grates
- Interchangeable drop on griddle plates
- 33MJ/hr stainless steel burners per 300mm section
- Stainless steel exterior
- Easy clean
- Easy service
- Fully modular
- Low back models (CHL) available

Overall Construction

CHARGRILL

- 2.5mm thick 304 stainless steel side splash guards
- Welded 1.5mm 304 stainless steel bull nose
- Welded splashback and side panels 1.2mm 304 stainless steel
- Front panels 0.9mm 304 stainless steel
- Front grease channel
- Welded 1.2mm 304 stainless steel grease drawers
- 1.5mm hot rolled steel burner box
- Aluminised steel grease drawer baffles
- Insulated sides

LEG STAND

- Fully modular for matched suite finish
- Framed top for connection to Chargrill
- 63mm dia. heavy-duty 1.2mm 304 stainless steel legs with adjustable feet
- Fully modular framed stand shelf with 0.9mm 304 stainless steel finish
- Quick assembly design (no tools required)

GRATES AND RADIANTS AND BAFFLES

- 150mm wide x 550mm top grate sections
- Top grates reversible for level or inclined use
- Inclined position incorporates flare reducing grate fin design with grooves to run grease into front collection channel
- Heavy weight castings for high demand performance
- Heavy-duty high efficiency cast iron burner radiants
- Improves heat retention and protects burners
- Baffles over grease drawers to reduce grease collection flare ups

GRIDDLE PLATES

- Optional extra 300mm wide and 450mm wide x 550mm deep drop on cast iron griddle sections.
- Machined smooth surface finish
- Interchangeable in any position with 2 or 3 sections of top grate
- Multiple griddle sections can be mixed in any positions

BURNERS

- Full 304 stainless steel burners
- 1 x 33MJ/hr burner per 300mm section
- Removable for cleaning
- Full pilot and flame failure protection per burner

Controls

- Individual Hi-Lo gas control to each burner with flame failure and pilot
- Large easy use control knob - heat resistant reinforced
- Easy view control settings on knob
- Piezo ignition to pilot burner

Cleaning and Servicing

- Easy clean stainless steel external finish
- Lift out radiants, burners and grease tray baffles
- All burner box interior parts lift out for full cleaning access
- Deep stainless steel grease collection drawers
- Access to all parts from front of unit

Technical data sheet for

GAS CHARGRILL

300mm, 600mm, 900mm, 1200mm

Specifications

Burner

33MJ/hr 304 stainless steel U-burner per 300mm section

Gas power

CH8300G-B 33MJ/hr, 9.8kW
 CH8600G-LS 66MJ/hr, 18.3kW
 CH8900G-LS 100MJ/hr, 27.7kW
 CH8120G-LS 133MJ/hr, 36.6kW

Cooking surface area

CH8300G-B 292mm x 500mm, 1460cm²
 CH8600G-LS 592mm x 500mm, 2960cm²
 CH8900G-LS 892mm x 500mm, 4460cm²
 CH8120G-LS 1192mm x 500mm, 5960cm²

Gas connection

R 3/4 (BSP) male

216mm from LH side, 31mm from rear, and 553mm from floor

All units supplied with Natural and LP gas regulator

DIMENSIONS

Width

300mm CH8300G-B

Depth 812mm

Height 315mm

Incl. splashback 485mm

Incl. low back 370mm

Width

600mm CH8600G-LS

900mm CH8900G-LS

1200mm CH8120G-LS

Depth 805mm

Height 915mm

Incl. splashback 1130mm

Incl. low back 970mm

PACKING DATA

300mm

0.2m³, 86kg (63kg nett)

Width 865mm

Depth 345mm

Height 665mm

600mm

0.48m³, 171kg (128kg nett)

Width 645mm

Depth 870mm

Height 855mm

900mm

0.70m³, 232kg (178kg nett)

Width 945mm

Depth 870mm

Height 855mm

1200mm

0.93m³, 295kg (227kg nett)

Width 1245mm

Depth 870mm

Height 855mm

GAS TYPES

Available in Natural gas and LP gas

Please specify when ordering

Units supplied complete with gas type conversion kits

Other gas types on request

OPTIONS AT EXTRA COST

Griddle plates 300mm drop on

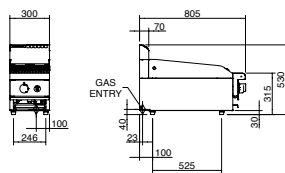
Griddle plates 450mm drop on

Joining caps

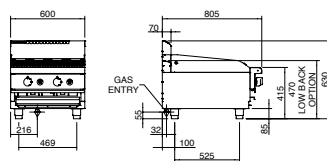
Castors

Plinth mounting

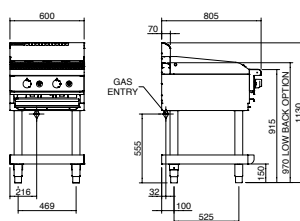
CH8300G-B



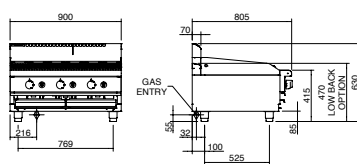
CH8600G-B



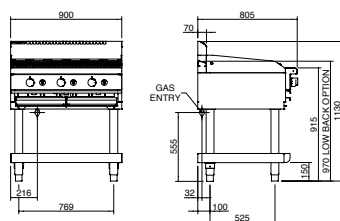
CH8600G-LS



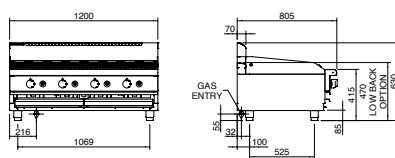
CH8900G-B



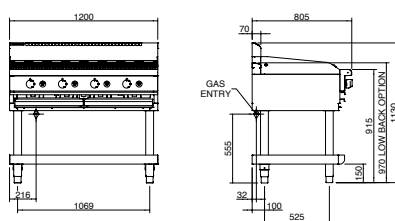
CH8900G-LS



CH8120G-B



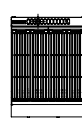
CH8120G-LS



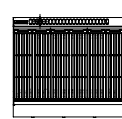
CH8600G



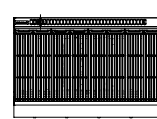
CH8600G



CH8900G



CH8120G



Waldorf
800 SERIES

MOFFAT

Australia
www.moffat.com.au
 New Zealand
www.moffat.co.nz

Australia
 Moffat Pty Limited

Victoria/Tasmania
 740 Springvale Road
 Mulgrave, Victoria 3170
 Telephone 03-9518 3888
 Facsimile 03-9518 3833
vsales@moffat.com.au

New South Wales
 Telephone 02-8833 4111
nswsales@moffat.com.au

South Australia
 Telephone 03-9518 3888
vsales@moffat.com.au

Queensland
 Telephone 07-3630 8600
qldsales@moffat.com.au

Western Australia
 Telephone 08-9202 6820
bgarcia@moffat.com.au

New Zealand
 Moffat Limited

Christchurch
 Telephone 03-389 1007
sales@moffat.co.nz

Auckland
 Telephone 09-574 3150
sales@moffat.co.nz



ISO9001
 Quality
 Management
 Standard

Designed and manufactured by

MOFFAT

ISO9001
 All Waldorf products are designed and manufactured by Moffat using the internationally recognised ISO9001 quality management system, covering design, manufacture and final inspection, ensuring consistent high quality at all times.



In line with policy to continually develop and improve its products, Moffat Limited reserves the right to change specifications and design without notice.

Printed in New Zealand
 © Copyright Moffat Limited
 Moffat/BH/6864

