

## Technical data sheet for

# GAS COOKTOPS 1200mm

RN8800G-B, RN8800G-CB, RN8800G-LS, RN8800G-RB, RN8803G-B, RN8803G-CB, RN8803G-LS, RN8803G-RB, RN8806G-B, RN8806G-CB, RN8806G-LS, RN8806G-RB, RN8809G-B, RN8809G-CB, RN8809G-LS, RN8809G-RB



RN8800G-LS

## Overall Construction

### COOKTOP

- Welded hob with 1.5mm 304 stainless steel bull nose
  - Splashback and side panels 1.2mm 304 stainless steel
  - Front panels 0.9mm 304 stainless steel
  - Aluminised steel internal construction
  - Cast iron 28MJ/hr open burners with forged brass cap
  - Vitreous enamelled cast iron potstands
  - Vitreous enamelled open burner spill covers
  - Cast iron simmer plates (optional extra)
  - 12mm thick mild steel griddle plate
  - 2.5mm 304 stainless steel griddle splash guards
  - Vitreous enamelled spill trays
- Griddle sections are standard on RH side. Available on LH side to order or by conversion.

### BENCH MOUNT (SUPPLIED AS -B MODEL)

- Four 63mm dia. heavy-duty 1.2mm 304 stainless steel bench legs with adjustable feet.
- Adjustable height 80mm – 105mm

### CABINET BASE (SUPPLIED AS -CB MODEL)

- Fully modular for match suite finish
- Double skin 0.9mm 304 stainless steel interior and exterior
- Optional GN 1/14 position racking kit (1 or 2 cabinet bays)
- Up to eight 65mm GN 1/1 capacity
- 63mm dia. heavy-duty 1.2mm 304 stainless steel legs with adjustable feet

### LEG STAND (SUPPLIED AS -LS MODEL)

- Fully modular for matched suite finish
- Framed top for connection to Cooktop
- 63mm dia. heavy-duty 1.2mm 304 stainless steel legs with adjustable feet
- Fully modular framed stand shelf with 0.9mm 304 stainless steel finish
- Shelf to top stainless steel backstop panel for convenience and rigidity
- Suitable for rear or through shelf gas connection to Cooktop
- Quick assembly design (no tools required)

- Heavy-duty construction
- 28 MJ/hr open burners
- Flame failure standard
- Pilot burners optional
- 300mm, 600mm, and 900mm griddle plate options
- Optional Simmer plates
- 3 models of base unit
- 1 model of ventilated refrigeration base with drawer/door options
- Stainless steel exterior
- Easy clean
- Easy service
- Fully modular
- Low back models (RNL) available

### REFRIGERATED BASE (SUPPLIED AS -RB MODEL)

- Self contained suite matched modular base
- Ventilated system with R134a refrigerant
- -2° to + 8°C temperature (Tropical Climate rated)
- Two GN 1/1 drawers and one door standard
- 100mm deep pan drawer capacity
- Heavy-duty European telescopic drawer guides
- Magnetic drawer gaskets (replaceable without tools)
- 50mm fully foamed CFC free insulation
- 304 stainless steel exterior and interior
- Anti-corrosion treated evaporator
- No condensate drain required
- 63mm dia. heavy-duty 1.2mm 304 stainless steel legs with adjustable feet
- Condensing unit removable through front of unit for service
- Easy clean interior

## Controls

### COOKTOP

- Variable high to low controls to open burners
- Open burners flame failure standard with pilot burners optional
- Variable high to low controls to griddles
- Griddles standard with pilot, flame failure and piezo ignition
- Large easy use control knob - heat resistant reinforced
- Easy view control settings on knob

### REFRIGERATED BASE

- Digital control electronic thermostat
- Automatic defrost
- Automatic evaporation of defrost water
- -2° to +8°C temperature range

## Cleaning and Servicing

- All models with easy clean stainless steel external finish
- Lift off burners heads and vitreous enamelled burner spill covers
- Vitreous enamelled spill trays under open burner and griddle sections
- Access to all parts from front of unit
- Refrigerated Base condenser removable through front of unit

# Technical data sheet for

## GAS COOKTOPS 1200mm



### Specifications

#### Burners

Open Burners 28MJ/hr dual flame ring with simmer rate  
Griddle Burners 20MJ/hr per 300mm section

#### Gas power

RN8800G	224 MJ/hr, 62.2kW
RN8803G	188 MJ/hr, 52.2kW
RN8806G	152 MJ/hr, 42.2kW
RN8809G	116 MJ/hr, 32.2kW

#### Griddle Plate

300mm Griddle cooking surface  
292mm x 475mm, 1387cm<sup>2</sup>  
600mm Griddle cooking surface  
592mm x 475mm, 2812cm<sup>2</sup>  
900mm Griddle cooking surface  
892mm x 475mm, 4237cm<sup>2</sup>

#### Gas connection

R 3/4 (BSP) male  
130mm from RH side, 32mm from rear,  
and 655mm from floor  
All units supplied with Natural and LP gas regulator

#### REFRIGERATED BASE

##### Type

Ventilated system

##### Refrigerant

R134a (160grams)

##### Climate classification

T – tropical

##### Electrical connection

220-240Vac, 50Hz, 1.8A, 1P+N+E  
3 pin 10A plug cordset fitted

#### DIMENSIONS

##### Bench models

Width 1200mm  
Depth 805mm  
Height 315mm  
Incl. splashback 530mm  
Incl. low back 370mm  
All models (excluding Bench model)  
Width 1200mm  
Depth 805mm  
Height 915mm  
Incl. splashback 1130mm  
Incl. low back 970mm

##### PACKING DATA

##### Bench and Leg Stand models

0.72m<sup>3</sup>, 216kg (158kg nett)

Width 1245mm

Depth 870mm

Height 665mm

##### Cabinet Base and Refrigerated Base models

1.36m<sup>3</sup>, 278kg (198kg nett)

Width 1245mm

Depth 870mm

Height 1255mm

#### GAS TYPES

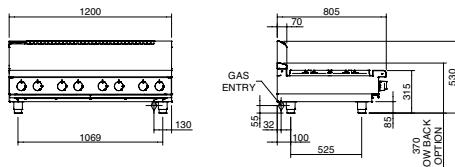
Available in Natural gas and LP gas  
Please specify when ordering  
Units supplied complete with gas type  
conversion kits  
Other gas types on request

#### OPTIONS AT EXTRA COST

Simmer plates (replaces Potstand)  
Ribbed griddle plates  
Joining caps  
Castors  
Plinth mounting

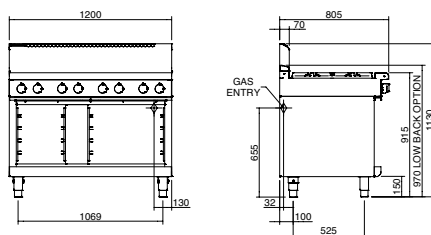
#### RN8800G-B

##### BENCH MODEL



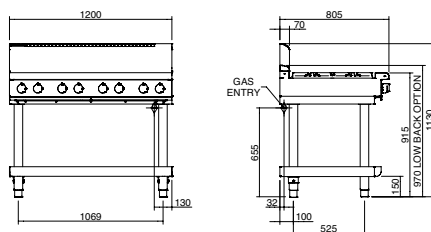
#### RN8800G-CB

##### CABINET BASE



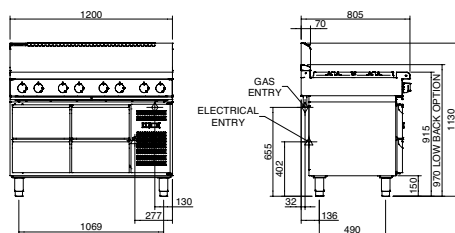
#### RN8800G-LS

##### LEG STAND

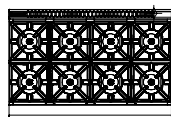


#### RN8800G-RB

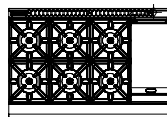
##### REFRIGERATED BASE



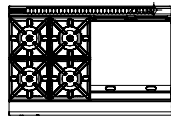
#### RN8800G



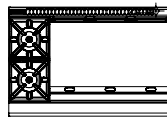
#### RN8803G



#### RN8806G



#### RN8809G



moffat.com.au  
moffat.co.nz

Australia  
moffat.com.au

#### Moffat Pty Limited

Victoria/Tasmania  
740 Springvale Road  
Mulgrave, Victoria 3170  
Telephone +613-9518 3888  
Facsimile +613-9518 3833  
vsales@moffat.com.au

New South Wales  
Telephone +612-8833 4111  
nswsales@moffat.com.au

South Australia  
Telephone +613-9518 3888  
vsales@moffat.com.au

Queensland  
Telephone +617-3630 8600  
qldsales@moffat.com.au

Western Australia  
Telephone +618-9413 2400  
wasales@moffat.com.au

#### New Zealand

moffat.co.nz

#### Moffat Limited

Rolleston  
45 Illinois Drive  
Izone Business Hub  
Rolleston 7675  
Telephone +64 3-983 6600  
Facsimile +64 3-983 6660  
sales@moffat.co.nz

Auckland  
Telephone +64 9-574 3150  
sales@moffat.co.nz



Cert. No. 6902

In line with policy to continually develop  
and improve its products, Moffat  
Limited reserves the right to change  
specifications and design without notice.

© Copyright Moffat Ltd  
AN.W8.08/19

an Ali Group Company



The Spirit of Excellence