



Hot and Cold Curved Benchtop Display Cabinets



ERE26

ERE27

Introducing a classy range of display cabinets from EuroChill. Solid stainless steel body, nicely finished with LED lighting and a bold black frame to accentuate your food display.



MEPS **CE**



E4369



RoHS

OTHER FEATURES

- Digital temperature controller and display
- Adjustable chrome plated shelves
- On/off switch
- Ventilated cooling system and automatic defrost
- Internal LED illumination on sides
- Stainless steel body
- Coated evaporators

Code	ERE26	ERE27
Gross capacity (L)	130L	130L
Temperature range (°C)	0-12	30-90
Rated input power (W)	200W	1150W
Power consumption (kWh/day)	3.8 kWh/day	3.6 kWh/day
Rated current (A)	1.3	5
Rated frequency (Hz)	50	50
Rated voltage (V)	220-240	220-240
Glass	Double glazed	Double glazed
Refrigerant	R600a	N/A
Lamp power (W)	2(LED)W	2(LED)W
Type of climate	4	N/A
Dimensions (mm)	797 x 590 x 685	779 x 590 x 685
Net weight (kg)	66	55.4

Sufficient ventilation required. See EuroChill warranty document for more information.

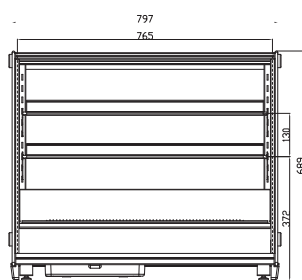
**1 year warranty applies for off shore New Zealand

- Subject to correct use and maintenance. Specifications are subject to change without notice

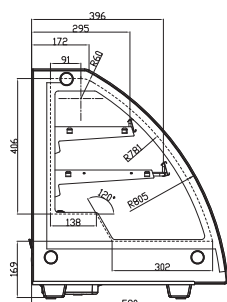
EuroChill Manufacturing

Distributed by Southern Hospitality Ltd 0800 503 335

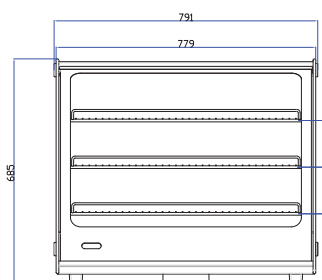
www.southernhospitality.co.nz



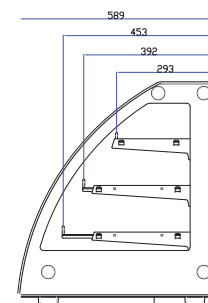
ERE26 Front



ERE26 Side



ERE27 Front



ERE27 Side